

RESEARCH

Open Access



Multilevel social structure and diet shape the gut microbiota of the gelada monkey, the only grazing primate

Pål Trosvik^{1*}, Eric J. de Muinck¹, Eli K. Rueness¹, Peter J. Fashing², Evan C. Beierschmitt³, Kadie R. Callingham⁴, Jacob B. Kraus⁵, Thomas H. Trew⁶, Amera Moges⁷, Addisu Mekonnen^{1,8}, Vivek V. Venkataraman⁹ and Nga Nguyen²

Abstract

Background: The gelada monkey (*Theropithecus gelada*), endemic to the Ethiopian highlands, is the only graminivorous primate, i.e., it feeds mainly on grasses and sedges. In spite of known dental, manual, and locomotor adaptations, the intestinal anatomy of geladas is similar to that of other primates. We currently lack a clear understanding of the adaptations in digestive physiology necessary for this species to subsist on a graminoid-based diet, but digestion in other graminivores, such as ruminants, relies heavily on the microbial community residing in the gastrointestinal (GI) system. Furthermore, geladas form complex, multilevel societies, making them a suitable system for investigating links between sociality and the GI microbiota.

Results: Here, we explore the gastrointestinal microbiota of gelada monkeys inhabiting an intact ecosystem and document how factors like multilevel social structure and seasonal changes in diet shape the GI microbiota. We compare the gelada GI microbiota to those of other primate species, reporting a gradient from geladas to herbivorous specialist monkeys to dietary generalist monkeys and lastly humans, the ultimate ecological generalists. We also compare the microbiotas of the gelada GI tract and the sheep rumen, finding that geladas are highly enriched for cellulolytic bacteria associated with ruminant digestion, relative to other primates.

Conclusions: This study represents the first analysis of the gelada GI microbiota, providing insights into the adaptations underlying graminivory in a primate. Our results also highlight the role of social organization in structuring the GI microbiota within a society of wild animals.

Keywords: Cellulolytic bacteria, Ecological specialist, Ethiopian highlands, GI microbiota, Graminivory, Multilevel society, Primates, Rumen

Background

All animals are intimately associated with complex consortia of microbes inhabiting accessible body surfaces, and these microbial communities are instrumental to animal physiology and function [1]. The most densely populated part of the mammalian anatomy is the gastrointestinal (GI) tract, where the microbial cells are thought to outnumber host cells [2]. The GI tract is presumed sterile at birth, upon which colonization through exposure commences rapidly to form the GI microbiota. In addition to

general exposure, factors such as diet and phylogeny have been found to be important determinants of GI microbiota composition, with GI bacterial communities highly co-evolved to specific lifestyles [3, 4]. The GI microbiota has been found to have plastic responses to changes in diet in humans [5], and in wild primate populations in response to habitat and seasonal variation [6–8]. A recent study even reported humanization of the primate GI microbiota as a result of captivity [9].

Animals are reliant on symbiotic bacteria for breaking down recalcitrant carbohydrates [10]. While ubiquitous, cellulose, the major structural component of plants, cannot be digested by vertebrates without the aid of protozoans or bacterial symbionts. Microbial digestion of cellulose can

* Correspondence: pal.trosvik@ibv.uio.no

¹Department of Biosciences, Centre for Ecological and Evolutionary Synthesis (CEES), University of Oslo, P.O. Box 1066, Oslo, Norway

Full list of author information is available at the end of the article



occur either in the vertebrate foregut (forestomach) or in the mid- or hind-gut (caecum or colon) [11]. Foregut fermentation has evolved only a few times in mammals (e.g., in the ancestors of the ruminants and colobine monkeys), while hindgut fermenting mammals form a comparatively diverse group that includes odd-toed ungulates, rodents, and rabbits, as well as several primate species. The ways in which the microbial systems that aid in the digestive process differ between fore- and hindgut fermenters have not been thoroughly investigated, although studies have found that the two groups tend to cluster separately in terms of their GI microbiomes [3, 4]. Furthermore, comparative meta-studies of these processes are hindered by a high degree of variation in the protocols used for describing complex microbial communities, which can make direct comparison between studies problematic [12].

Among extant primates, only one species is an ecological specialist on graminoids (i.e., grasses and sedges): the gelada monkey (*Theropithecus gelada*) [13]. The gelada is the sole remaining species of a once widespread genus of grazing primates [14]. Today, geladas are endemic to the alpine grasslands of the Ethiopian Highlands where they are threatened by climate change and human encroachment [15]. Geladas have several morphological adaptations that help them subsist on this highly specialized diet, including reduced incisors and enlarged molars, as well as elongated, robust thumbs and reduced second fingers that form an effective pincer-like apparatus for harvesting graminoids [16, 17]. These peculiar adaptive traits of extant geladas (*T. gelada*) are also found in extinct *Theropithecus* from as early as 3.7 Ma, suggesting a long-standing reliance on herbaceous plants (graminoids and forbs) in this primate genus [18]. Moreover, geladas employ a characteristic shuffling gait that allows them to move around in a sitting position while harvesting food [19]. The lack of specialized anatomical features in the gelada GI tract suggests that the GI microbiota plays a pivotal role in digesting a high-fiber diet of recalcitrant carbohydrates, possibly through hindgut fermentation [16]. However, the way in which this is achieved, and to what extent the gelada GI microbiome resembles those of other primate species, including humans, as well as other non-primate graminivores, is not known. In fact, an *in vitro* study using gelada feces to inoculate grass for fermentation found the process to be unexpectedly inefficient [20]. Compared to other highland sites in Ethiopia where geladas occur, such as Simien Mountains National Park, our study site, the Guassa Plateau, represents a relatively intact ecosystem with little disturbance from humans and livestock [13]. This means that the Guassa geladas (Fig. 1) still adhere to what is thought to be their traditional diet, making Guassa an ideal location for studying the GI microbiome of a graminivorous primate in a natural ecological setting.



Fig. 1 The Steelers band of geladas at Guassa. The great Rift Valley can be seen below in the distance. Photo courtesy of Jeffery T. Kerby

Geladas live in multilevel societies, which at the lowest tier consist of reproductive units of one or several closely related females with their young and one or a few males. Multiple reproductive units form a larger structure known as a band, which shares a common home range and can include hundreds of animals [21]. Host social behavior has been found to contribute to variation in the composition of the GI microbiota in humans and non-human primates [22–25]. Although most gelada social interactions occur within the reproductive units, a band of geladas travels, eats, and sleeps together, thus making them a suitable model system for investigating the effects of social interactions on the microbiome within the larger context of an animal society.

Here, we use deep 16S rRNA gene amplicon sequencing to analyze 316 fecal samples from 39 female geladas of reproductive age, belonging to eight distinct reproductive units from a single band. The band is one of several that reside on the Guassa Plateau, where the monkeys have been studied intensively for the past decade [26]. Much is therefore known about key life history variables such as group membership, age, health, and dietary habits across changing seasons, and we investigate how these factors work to structure the gelada GI microbiota. To shed light on the adaptations underlying primate graminivory, we compare the gelada GI microbiota to that of humans as well as to three other Ethiopian monkey species, the bamboo-feeding specialist Bale monkey (*Chlorocebus djamdjamensis*) [27], and two dietary generalist species, the vervet (*Chlorocebus pygerythrus*) and the grivet (*Chlorocebus aethiops*) [28]. We further compare the gelada monkey GI microbiota to the rumen microbiota of domestic sheep (*Ovis aries*), a highly specialized graminivorous foregut fermenter. Ours is the first study to describe the GI microbiota of a graminivorous primate, and our findings shed new light on the digestive adaptations underlying this unique dietary specialization. Our study also contributes to a growing body of literature on the links between social structure and the GI microbiota.

Results

Intrinsic structuring factors of the gelada GI microbiota

In all 316 gelada samples combined, we identified a total of 1624 different operational taxonomic units (OTUs) on the 97% sequence identity level. In general, low level taxonomic classification was poor with only 11% of OTUs classified to the genus level with a probability of 0.9 or higher. 48 OTUs (3.0% of total) were found in all 316 gelada samples, while 284 OTUs (12.4%) were common to at least 90% of samples, suggesting a limited core microbiome. Half of the 48 OTUs making up the core set were classified as *Bacteroidetes*, with 13 of these assigned to the class *Sphingobacteriia*. In addition, three of the core OTUs were classified as phylum *Verrucomicrobia* class *Subdivision 5*. A full list of the gelada core microbiota can be found in Additional file 1: Table S1. We also employed an alternative to traditional OTU clustering, the DADA2 algorithm that can resolve amplicon reads to the single nucleotide difference level [29], to evaluate whether finer scale resolution of the sequence data could help explain more of the variation between social groups.

We used three complementary dissimilarity metrics to assess the effects of several structuring factors on the gelada GI microbiota. Bray-Curtis distances are based on taxonomic (OTU assignment) and abundance information. The two variants of the UniFrac metric incorporate phylogenetic distances between OTUs; weighted UniFrac distances also incorporate abundance information, while unweighted UniFrac distances only consider phylogenetic similarity. The strongest structuring factor of the gelada microbiome was variation between individuals ($n = 39$ individuals, $p < 0.001$, PERMANOVA with Bray-Curtis distances). Individual identity explained 20.4% of the between-sample variation in geladas, indicating extensive sharing of the GI microbial community within the band. Individuals belonging to the same reproductive unit had significantly more similar GI microbiotas relative to individuals from different units ($p < 0.001$), with this factor explaining 5.8% of between-sample variation. Age and reproductive status both exerted marginal, though significant, effects on the gelada microbiota (Table 1), while parasitic tapeworm (*Taenia*

serialis) disease status had no measurable effect. Using unweighted UniFrac distances as an alternative dissimilarity measure yielded similar results (Additional file 1: Table S2), though the age effect disappeared and there was a marginally significant effect of tapeworm infection when we used weighted UniFrac distances (Additional file 1: Table S3). Thus, the strongest intrinsic structuring factor of the gelada GI microbiota appears related to the social group, while the effects of age and tapeworm infection were marginal and inconsistent.

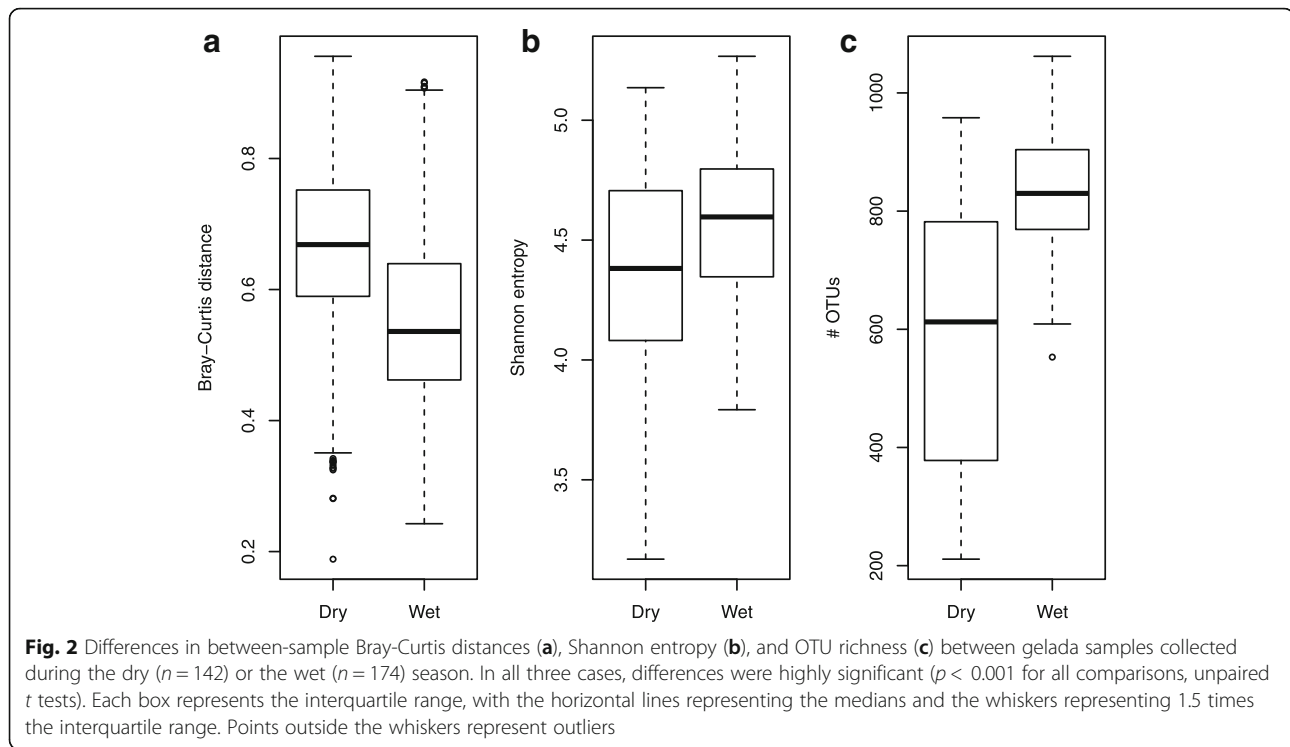
PERMANOVA using the OTU table based on DADA2 sequence variants and Bray-Curtis distances found that reproductive unit explained 5.7% of between sample variation ($p < 0.001$). This result is similar to the one we got using 97% sequence identity OTU clustering (5.8% explained variation), suggesting that strain level differences in GI microbiota composition is not the driving force behind the observed social structure effect. UniFrac distances also gave very similar results ($R^2 = 0.052$ and 0.055, for weighted and unweighted UniFrac, respectively; $p < 0.001$ for both tests).

Seasonal effects

Overall, the most abundant phylum in the gelada GI microbiota was *Bacteroidetes* (44.5%) (Additional file 1: Figure S1), followed by *Firmicutes* (34.6%) and *Spirochaetes* (4.5%). Samples collected during the dry and wet seasons differed significantly from one another (< 0.001 , PERMANOVA with Bray-Curtis distances), with season of sampling explaining 3.5% of between-sample variation. The seasonal effect was also evident when using UniFrac distances (Additional file 1: Tables S2 and S3). We found that inter-individual variation in the GI microbiome was much higher during the dry than the wet season, i.e., between-sample Bray-Curtis distances were greater during the dry relative to the wet season (means of 0.67 vs. 0.56, respectively, $p < 0.001$, unpaired t test) (Fig. 2a). This result was maintained when using UniFrac distances (Additional file 1: Figure S2). The mean relative abundance of the phylum *Bacteroidetes* was significantly higher during the wet (47.3%) relative to the dry (42.2%) season (Additional file 1: Figure S1; $p < 0.001$, Wilcoxon rank sum test), while *Firmicutes*

Table 1 PERMANOVA test results for effects on the GI microbiota using 1000 permutations and Bray-Curtis distances. The R-squared values indicate the amount of between-sample variation explained by each variable

Factor	R^2	P value	Groupings
Individual	0.204	0.001	Monkey #1–39 ($n = 1–12$; mean = 8)
Reproductive unit	0.058	0.001	Unit #1–8 ($n = 8–84$; mean = 40)
Season	0.035	0.001	Dry ($n = 142$), wet ($n = 174$)
Age	0.008	0.001	Prime ($n = 246$), old ($n = 70$)
Fecundity status	0.023	0.041	T1 ($n = 27$), T2 ($n = 13$), T3 ($n = 32$), PPA ($n = 178$), cycling ($n = 66$)
Coenurosis		n.s.	Swelling ($n = 235$), no swelling ($n = 81$)



and *Spirochaetes* were more abundant during the dry season (36.3 vs. 32.6% and 5.3 vs. 3.6%, respectively; $p < 0.001$). Out of the 168 most prevalent OTUs, 103 had significant differential occurrence across seasons, with 93% of these enriched during the dry season. The affected OTUs were mostly classified as *Bacteroidetes* (44%) or *Firmicutes* (36%), while 9% were classified as phylum *Verrucomicrobia class Subdivision 5*. The full table can be found in supplementary information (Additional file 1: Table S4). Interestingly, of all the variables we investigated, only season had a significant effect on observed diversity, as measured both by Shannon entropy (Fig. 2b) and OTU richness (Fig. 2c), with elevated diversity levels during the wet season ($p < 0.001$ for both comparisons, unpaired t test). Indeed, the mean number of observed OTUs rose from 587 during the dry to 837 during the wet season, an increase of 42.6%.

Comparison with humans and other non-human primates

To gain insights into the adaptations of the GI microbiota underlying graminivory in a primate, we compared the gelada GI microbiota, based on one randomly selected fecal sample from each of the 39 individual geladas, with the GI microbiotas of Bale monkeys, vervets and grivets, as well as human adults and infants. In this dataset, we identified 2280 97% sequence identity OTUs. The primate species formed distinct clusters (Fig. 3) with the primary axis of variation distinguishing geladas from other primates and the secondary axis distinguishing

humans from monkeys. Species explained 42.9% of the total variation in between-sample Bray-Curtis distances ($p < 0.001$, PERMANOVA) with the percentage increasing to 45.2% when considering human infants as a separate group (which will be the case for all upcoming comparisons). Using UniFrac as a distance measure yielded very similar results (Additional file 1: Figure S3). On the phylum level (Fig. 4), geladas had less *Firmicutes* and *Proteobacteria*, but more *Bacteroidetes* than the other monkeys ($p < 0.001$ for all comparisons, Wilcoxon rank sum test). While the mean relative abundance of *Firmicutes* was less than for human adults ($p < 0.001$), it was comparable to human infants, and the abundance of *Proteobacteria* was marginally less in geladas compared with human adults and infants ($p = 0.054$ and 0.057 , respectively). The mean relative abundance of *Bacteroidetes* was not significantly different between geladas and human adults or infants. *Actinobacteria*, a relatively abundant phylum in all other primate groups (Fig. 4), was comparatively rare (0.24% mean relative abundance) in geladas ($p < 0.001$ for all comparisons). Geladas had highly elevated levels of *Fibrobacteres* (1.2%) relative to all other groups ($p < 0.001$ for all comparisons), and this pattern was also observed for *Verrucomicrobia* ($p < 0.025$ for all comparisons) and *Tenericutes* ($p < 0.001$ for all comparisons). *Spirochaetes* were relatively abundant in all monkey species but practically absent in both human adults and infants. Two hundred and nineteen OTUs (of a

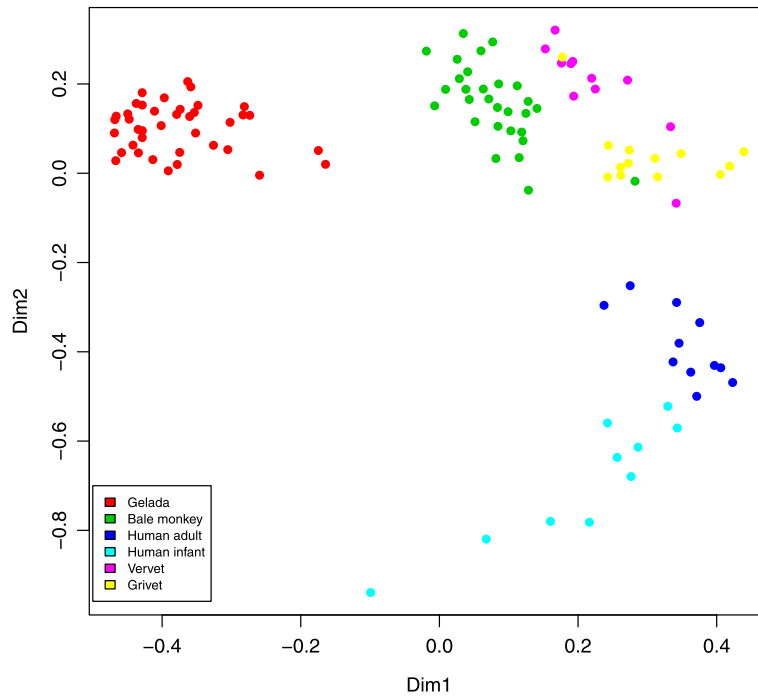


Fig. 3 Non-metric multidimensional scaling of all primate samples based on the Bray-Curtis distance matrix. The plot shows the two main dimensions of variation, with plotted characters color coded according to sample type. Clustering according to samples type was highly significant, explaining 43% of between-sample variation ($p < 0.001$, PERMANOVA). The model stress value was 10.7. Gelada ($n = 39$), Bale monkey ($n = 29$), human adult ($n = 11$), human infant ($n = 10$), vervet ($n = 11$), grivet ($n = 13$)

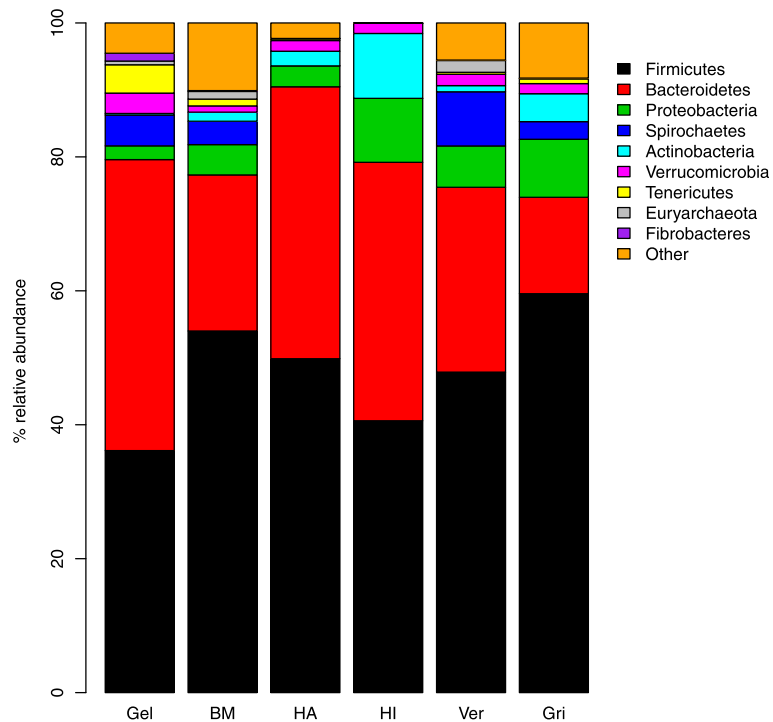


Fig. 4 Mean relative abundances of the nine most prevalent phyla in the six categories of primate samples. Gel, gelada ($n = 39$); BM, Bale monkey ($n = 29$); HA, human adult ($n = 11$); HI, human infant ($n = 10$); Ver, vervet ($n = 11$); Gri, grivet ($n = 13$). The category "Other" includes OTUs that could not be classified to the phylum level with a probability higher than 0.5

total of 2280) were exclusive to gelada monkeys. The majority of these were *Firmicutes*, but 15 were classified to phylum *Verrucomicrobia* class *Subdivision 5*, while 14 were phylum *Bacteroidetes* class *Sphingobacteriia*. The full list can be found in Supplementary information (Additional file 1: Table S5).

EdgeR exact tests found that out of the 458 most prevalent OTUs in the combined primate dataset, 146 were significantly enriched in gelada monkeys, while 211 were significantly underrepresented. Among the top ten OTUs enriched in geladas, including the top two, three OTUs were classified to the phylum *Verrucomicrobia* class *Subdivision 5*. Four of the top ten were classified as *Bacteroidetes*, putatively to the family *Sphingobacteriaceae* (albeit at low assignment probabilities: 0.05–0.19), and out of these four, three OTUs were found at mean relative abundances of >1.5%. A full overview of the enrichment analysis, including taxonomic assignment probabilities, can be found in Supplementary information (Additional file 1: Table S6).

We also estimated the combined core microbiota of all three *Chlorocebus* species for comparison with the gelada core set. This analysis identified 86 OTUs that were present in all of the *Chlorocebus* monkey individuals (Additional file 1: Table S7). Fifty percent of the gelada core OTUs was classified as *Bacteroidetes*, with 27% further classified to the class *Sphingobacteriia* and family *Sphingobacteriaceae*. In contrast, *Bacteroidetes* constituted only 13% of the *Chlorocebus* core with only 2% classified as *Sphingobacteriaceae*. Not a single OTU in the *Chlorocebus* core was classified to phylum *Verrucomicrobia*, and the *Chlorocebus* core microbiota was generally dominated by *Firmicutes* (77%), which only constituted 33% of the gelada core set.

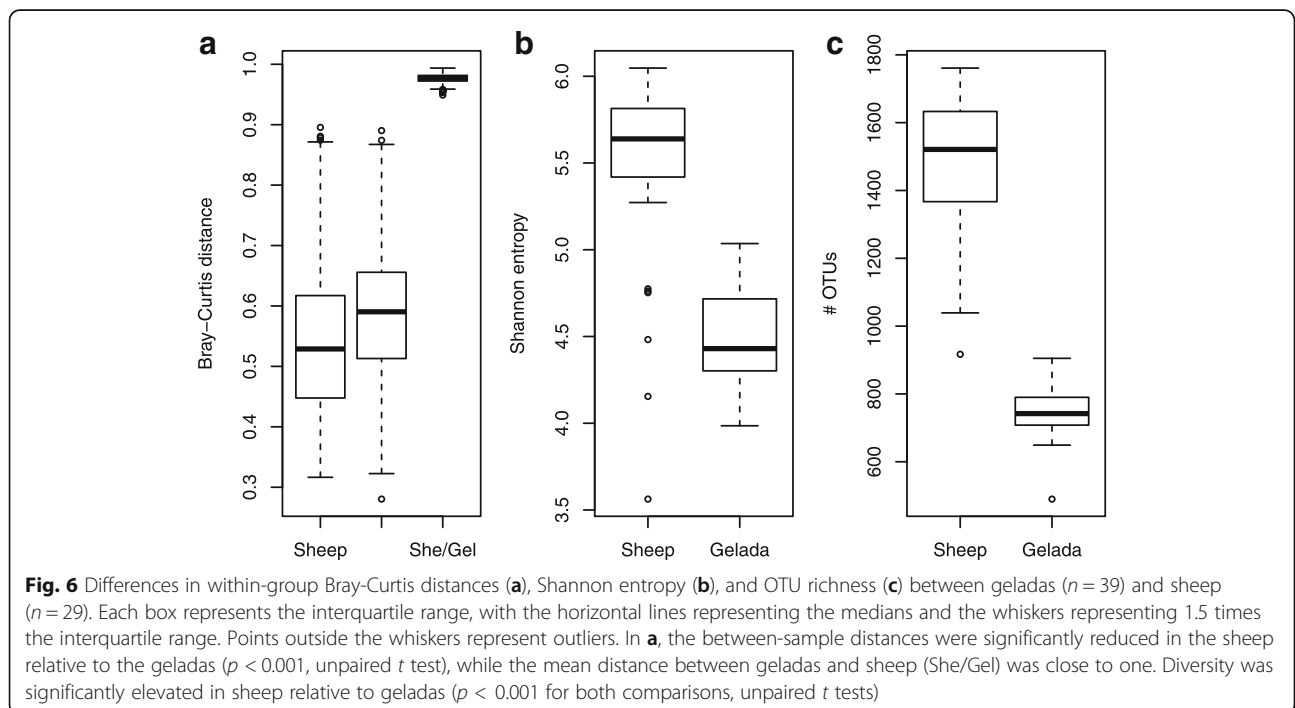
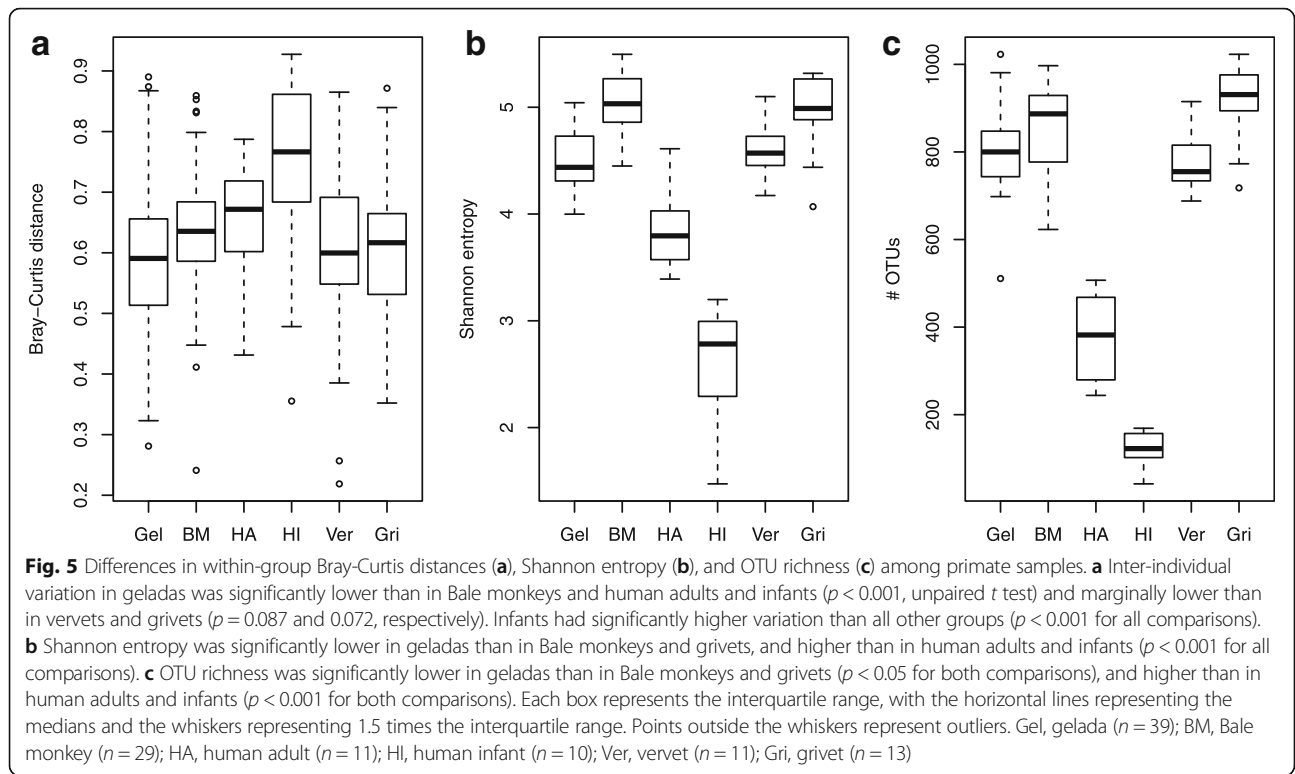
In terms of overall mean relative abundance, OTUs classified as *Sphingobacteriaceae* constituted 27.7% of the gelada microbiota compared to 4.5% and 3.2% in vervets and Bale monkeys, respectively, 0.6% in grivets, 0.5% in human adults, and <0.1% in infants. It should be noted that these OTUs were classified with low confidence, even at the class level (mean assignment probability of 0.27). OTUs classified as *Verrucomicrobia* *Subdivision 5* were also highly abundant in geladas at 3.1% mean relative abundance, more than twice that of any other monkey species. These OTUs were found at 0.3% mean relative abundance in human adults, while not a single one was found in the infants.

Geladas had the lowest amount of inter-individual GI microbiota variation (Fig. 5a) with a mean Bray-Curtis distance of 0.59 which was significantly lower than in Bale monkeys and human adults and infants ($p < 0.001$, unpaired t tests) and marginally lower than in vervets and grivets ($p = 0.087$ and 0.072 , respectively). Within-group Bray-Curtis distances were significantly elevated in both human groups relative to all four monkey species ($p < 0.05$),

and inter-individual variation was particularly high in the infants (mean of 0.76). Similar patterns were also observed when using UniFrac distances as alternative dissimilarity metrics (Additional file 1: Figure S4). Diversity in the GI microbiomes of the monkey species was comparable both as measured by Shannon entropy (Fig. 5b) and OTU richness (Fig. 5c), but much reduced in humans relative to the monkeys. In particular, the number of OTUs observed in human adults was about half of what was observed in monkeys, and in infants the number was reduced nearly sevenfold.

Comparison with the sheep rumen microbiota

We also compared the gelada GI microbiota with that of a non-primate domestic graminivore. This analysis focused on the 39 gelada samples from the previous analysis and 29 sheep rumen samples from domestic sheep housed at three different farms in central Norway. Comparing feces and rumen content is maybe not ideal, but the GI microbiota of the wild geladas at Guassa can only be studied through non-invasive sampling, while the rumen is the site of cellulose digestion in sheep. OTU clustering of this dataset resulted in the identification of 2979 OTUs on the 97% sequence identity level. Inter-individual variation was significantly lower in sheep than in geladas ($p < 0.001$, unpaired t test), while the mean Bray-Curtis distance between sheep and geladas was close to 1 (Fig. 6a), indicating little overlap between the GI microbiotas of the two species (Additional file 1: Figure S5). Using UniFrac distances as a dissimilarity metric produced similar results (Additional file 1: Figs. S6 and S7). In fact, only 17 OTUs, i.e., less than 0.6% of the total OTU number, were shared between all gelada and sheep samples, with these OTUs accounting for 4.9% of the total mean relative abundance in the gelada GI microbiota and 3.0% in the sheep rumen. Out of these 17 OTUs, 14 were classified as *Firmicutes*, many with poor classification accuracy. The final three OTUs included a poorly classified *Tenericutes*, a *Prevotella*, and a methanogenic archaeon. The full list can be found in Additional file 1: Table S8. With relaxed criteria, the number of shared OTUs increased (Additional file 1: Figure S8), with 162 OTUs found in at least 50% of samples from both geladas and sheep (Additional file 1: Table S9), with these OTUs collectively accounting for 15.9 and 7.2% of the total mean relative abundance in geladas and sheep, respectively. The majority (72%) of these OTUs were *Firmicutes*, mostly classified to the families *Ruminococcaceae* (41), *Lachnospiraceae* (33), and *Clostridiaceae* (17). Only nine OTUs were classified as *Bacteroidetes* (two classified as family *Sphingobacteriaceae*), while nine were *Proteobacteria*, three were *Verrucomicrobia* *Subdivision 5*, and three were *Euryarchaeota*. Shannon entropy (Fig. 6b) and OTU richness (Fig. 6c) were highly elevated in sheep relative to geladas ($p < 0.001$ for both comparisons, unpaired



t test), with the sheep rumen microbiota harboring, on average, nearly twice as many OTUs as the gelada GI microbiota (1475 vs. 746 OTUs). On the phylum level, there were substantial differences between the two species (Fig. 7). The mean relative abundance of *Firmicutes* was much higher in geladas than in sheep (36.1 vs. 18.6%; $p < 0.001$, Wilcoxon rank sum test), and this was also the case for *Tenericutes* (4.2 vs 0.9%; $p < 0.01$). Several phyla were found at significantly higher mean relative abundances in sheep relative to geladas, including *Verrucomicrobia* and *Euryarchaeota* ($p < 0.001$ for both comparisons). In particular, *Fibrobacteres* and *Lentisphaerae* were much more common in sheep (mean of 9.9 vs. 1.2%, and 0.8 vs. 0.1%, respectively; $p < 0.001$ for both comparisons), while *Elusimicrobia* occurred at a mean level 25 times that observed in geladas. The relatively rare phyla *Synergistetes*, *Chloroflexi*, and candidate division *SRI* were all recovered from sheep at mean relative abundances between 0.2 and 1.1%, and not a single read classified to any of these groups was found in the gelada samples. Among the 28 OTUs classified as *Fibrobacteres*, 8 were found exclusively in geladas while the remaining 20 were found only in sheep. The gelada OTUs formed a monophyletic group along with two of the sheep OTUs, the rest of which showed a higher degree of phylogenetic diversity (Additional file 1: Figure S9).

Overall, OTUs putatively classified to the family *Sphingobacteriaceae* were highly abundant in both geladas and sheep, at 27.7 and 19.7% mean relative abundance, respectively. On the other hand, diversity within this family was much higher in sheep with 180 OTUs versus 43 in geladas. Again, we would like to point out that these OTUs were classified with low confidence, even on the class level (*Sphingobacteriia*). OTUs classified as *Verrucomicrobia Subdivision 5* were also highly abundant in sheep at 5.0% mean relative abundance (3.1% in geladas).

We also compared sheep to the other primate in our study. Using OTU level Bray-Curtis distance as a dissimilarity measure, we did not find compelling evidence that the gelada GI microbiota resembled the sheep rumen microbiota more than those of the other monkey species. However, when using phylum level Bray-Curtis distances, the gelada GI microbiota was significantly more similar to sheep than to the microbiotas of any of the other primates in our study (Additional file 1: Figs. S10 and S11; $p < 0.001$ for all comparisons). When using UniFrac (OTU level) distances, geladas were found to be significantly more similar to sheep than to any other primate group (Additional file 1: Figure S12; $p < 0.001$ for all comparisons, unpaired *t* test). These results indicate that although geladas and sheep share few specific OTUs, the gelada GI

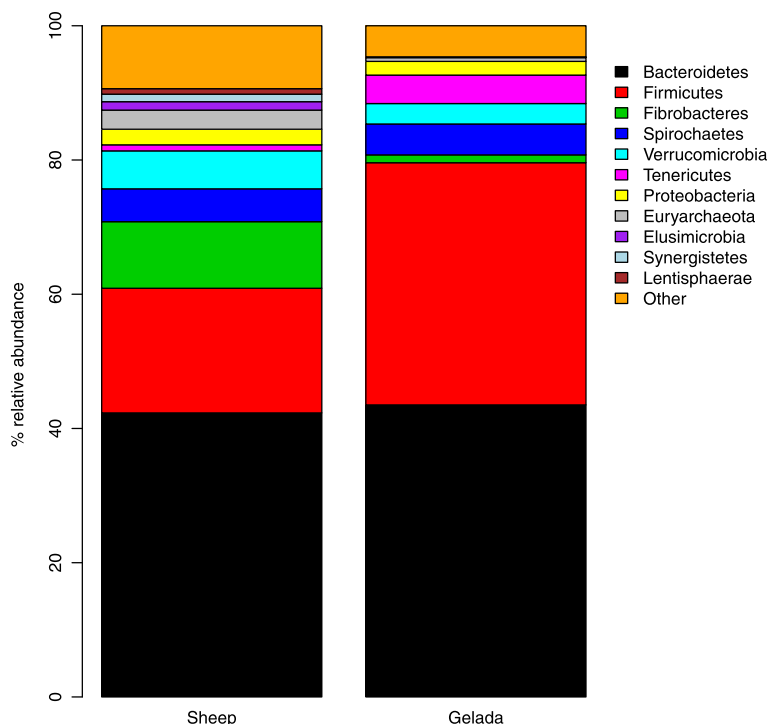


Fig. 7 Mean relative abundance of the 11 most prevalent phyla in geladas ($n = 39$) and sheep ($n = 29$). The category “Other” includes OTUs that could not be classified to the phylum level with a probability higher than 0.5

microbiota is more phylogenetically more similar to sheep than any other primate species in this study.

Functional profiling of microbiotas

Lastly, we estimated the bacterial and archaeal genes present in the metagenomes of all the animals in our study using the PICRUSt algorithm [30]. The accuracy of PICRUSt's predicted metagenomes can, however, vary depending on the extent to which sequenced genomes for the OTUs in our samples are available in the reference genome database. The average Nearest Sequenced Taxon Index (NSTI) provides a measure of how well a microbiota can be matched to the reference database, with high scores indicating that few related references are available. NSTI values were highest in geladas (mean 0.294 ± 0.034 s.d.), and as expected, they were much lower for humans than for any of the monkey species (Additional file 1: Figure S13a). The difficulty of finding references for OTUs associated with the gelada GI microbiota in the current genome database was further reflected in the much lower mean number of assigned KEGG orthologs (KOs) in this species relative to the other animals we sampled ($p < 0.001$ for all comparisons, unpaired *t* test) (Additional file 1: Figure S13b). The number of KOs was also much lower in geladas than in sheep ($p < 0.001$), although the extremely high diversity of the rumen microbiota would probably contribute to a higher number of assigned KOs relative to geladas.

Given these limitations, the results of our PICRUSt analysis (below) should be interpreted with caution. Furthermore, in the following analyses, counts of assigned functional classes are normalized to relative abundances to account for differential assignment efficiency.

The functional profiles showed strong clustering by group ($R^2 = 0.54$, $p < 0.001$, PERMANOVA with Bray-Curtis distances), with geladas being more similar to sheep than to any other primate group (Fig. 8, Additional file 1: Figure S14). In a number of functional categories, we saw differentiation in metabolic potential from ecological specialists (sheep, geladas, and Bale monkeys) to generalist monkeys and humans. For example, the proportion of metabolic capacity dedicated to the metabolism of several groups of amino acids followed a gradient from high in specialists to low in generalists (Additional file 1: Figure S15). Interestingly, we observed the same trend for degradation of limonene and pinene (Additional file 1: Figure S16). These substances belong to a class of hydrocarbons known as terpenes, the largest class of plant secondary metabolites [31]. We also looked for specific enrichment of the three main cellulolytic enzyme categories: β -1,4-endoglucanases (KEGG orthology K01179), β -1,4-exoglucanases (K01225), and β -glucosidases (K05350) [32]. β -1,4-endoglucanases were significantly enriched in sheep relative to primates ($p < 0.001$ for all comparisons,

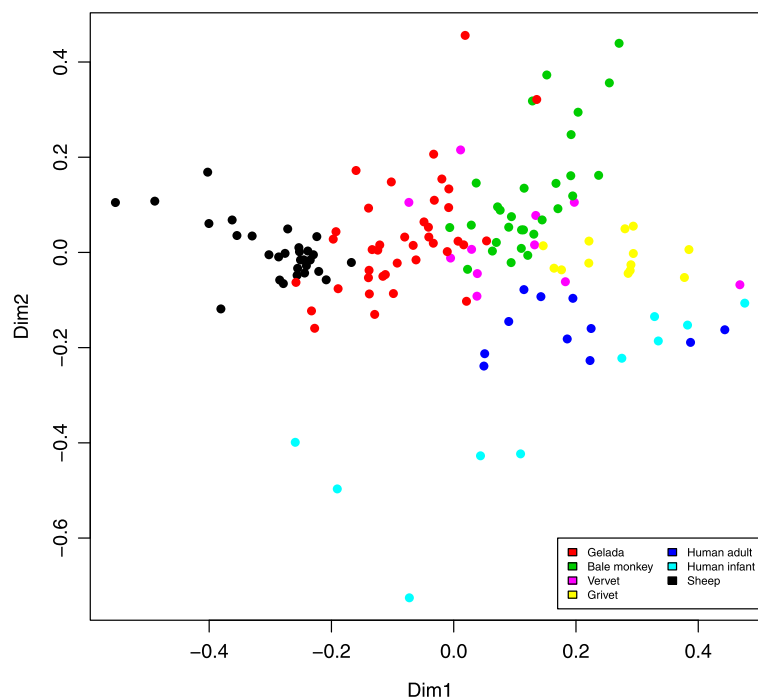


Fig. 8 Non-metric multidimensional scaling of primates and sheep based on the Bray-Curtis distance matrix computed from relative abundance table of KEGG orthologs. The plot shows the two main dimensions of variation, with plotted characters color coded according to sample type. Clustering according to samples type was highly significant, explaining 56% of between-sample variation ($p < 0.001$, PERMANOVA). The model stress value was 10.5. Sheep ($n = 29$), gelada ($n = 39$), Bale monkey ($n = 29$), human adult ($n = 11$), human infant ($n = 10$), vervet ($n = 11$), and grivet ($n = 13$)

unpaired t test), and in geladas relative to humans and grivets ($p < 0.001$), but not to Bale monkeys and vervets (Additional file 1: Figure S17a). β -1,4-exoglucanases were enriched in geladas relative to sheep and humans ($p < 0.001$), but not relative to the other monkey species (Additional file 1: Figure S17b). β -glucosidases were enriched in geladas relative to sheep and all primate groups ($p < 0.02$) except Bale monkeys (Additional file 1: Figure S17c). We further compared the putative taxa that contributed cellulolytic functionality in geladas and sheep. At the family level, the main taxa contributing cellulolytic functions were *Ruminococcaceae*, *Clostridiaceae*, and *Lachnospiraceae* (Additional file 1: Table S10). Notably, producers of β -1,4-endoglucanases were dominated by those three families, but in sheep, 10.3% were contributed by *Prevotellaceae*. In addition to the three main families, producers of β -glucosidases also included considerable numbers of OTUs classified as family *Erysipelotrichaceae*.

Discussion

Here, we present the first study of the microbiota of gelada monkeys, the only extant primate graminivores. We report consistent individual microbiota profiles among adult females belonging to eight reproductive units, with relatively strong effects of social group membership and seasonal feeding habits. We further describe a gradient in microbiota composition from herbivorous to omnivorous primates, and we identify bacterial groups associated with ruminant digestion that were highly enriched in geladas relative to other primates. We also identify putative metabolic pathways distinguishing grass feeding specialists from ecological generalists. From human studies, GI microbiomes are known to be highly individual [22], although temporal variation within an individual can be substantial [33]. A recent study compared the bacterial content in sequentially collected fecal samples from five healthy adult humans, finding that almost 75% of inter-sample variation in Bray-Curtis distances could be explained by sample origin [34]. In contrast, we found that individuality only explained 20.4% of between-sample variation within geladas at Guassa. Likely explanations for this observation are a highly uniform diet [13] and extensive sharing of GI microbes as a result of co-habitation by the many reproductive units within a band [21, 26]. Investigations into other similar systems like hamadryas baboons [35], snub-nosed monkeys [36], and elephants [37] will be needed to establish the degree to which individual microbiome signatures are blurred by living in a large multilevel society within which behaviors are highly synchronized.

We found a significant effect of social group membership on the GI microbiota in geladas. This finding supports the view that convergence in host GI microbial

communities among the members of a social group is due in part to shared environment (including diet and social contact). Similar effects of social group membership on the GI microbiota have now also been documented in several well-studied primate species, including yellow baboons [24], chimpanzees [25, 38] and sifaka lemurs [39]. Tung et al. [24] compared two neighboring groups of baboons, finding that group membership explained 18.6% of the total variation in Bray-Curtis distances between samples. They further found that animals with a closer grooming partnership had more similar GI microbiotas and that this result was independent of kinship. Degnan et al. [38] similarly compared chimpanzees belonging to two different social groups with adjacent territories, finding distinct GI microbiome signatures between groups and no discernible effect of genetic relatedness. Moeller et al. [25] found that social interactions affected the diversity of the GI microbiota in a group of chimpanzees, with more diverse GI microbiotas during periods of increased social interaction. Springer et al. [39] studied two neighboring groups of Verreaux's sifakas, finding that group provenance explained 11.4–15.4% of GI microbiota variation, depending on the distance measure used. In our study, social group membership, although highly significant, accounted for only 5.8% of inter-sample variability. This may be explained by the fact that gelada reproductive units are not analogous to the discrete social groups formed by other primates. While groups of baboons, chimps, and sifakas have their own territories, all eight gelada reproductive units in this study are part of a single band, traveling together and sharing a common food supply [13, 26]. Thus, it is to be expected that the reproductive unit signature in geladas would be weaker than in other social primates. Although we are unable, at present, to evaluate the extent to which kinship, shared diet, or social contact contribute to the social unit signature in the gelada GI microbiota, future studies of geladas and other social animals should endeavor to address this particular issue. This would allow us to draw more definitive conclusions about the specific factors driving observed GI microbiota differences between animal social groups.

Our finding of a putative age effect on the composition of the gelada GI microbiota is consistent with previously documented impacts of aging on the GI microbiota in humans [40, 41]. Studies of wild primates have also documented significant, although subtle, differences in GI microbiota composition between juvenile and adult animals [39, 42]. All individuals sampled in this study were of reproductive age, although the age range varied by at least 10 years in some cases, and it should be pointed out that the observed effect was marginal and varied depending on the dissimilarity metric used for comparison. Aging is known to impact physiological traits important to the GI microbiota such as digestive function [43] and immune

function [44], although it is not known whether the older monkeys in this study were of an age when these effects may be expected to be significant. A previous study of gelada chewing efficiency found that older individuals exhibited greater dental wear and were expected to avoid tough graminoids [17]. Thus, age effects on the GI microbiota may also reflect differences in dietary patterns.

We also observed a marginal though significant and consistent effect of reproductive status on the gelada GI microbiome. During a normal pregnancy, the human body goes through extensive hormonal, immunological, and metabolic changes [45, 46], and substantial remodeling of the GI microbiome has been documented from the first to the third trimester [47]. In contrast, a recent study did not find any effect of reproductive state on the GI microbiome in sifakas [39]. Our results raise the possibility that host reproductive status may, in some instances, influence the composition of the GI microbiota.

There is some evidence that intestinal parasites can affect the composition of the GI microbiota in wild animals [48], presumably through direct biotic interactions as well as indirectly through effects on the immune system. Compared to their healthy counterparts, geladas at Guassa with visible tapeworm (*Taenia serialis*) infection of the skin suffer from reduced survival and reproductive rates [26]. Tapeworm infection could potentially influence the GI microbiota by modulating immune function, but we did not observe a consistent effect in our study.

Seasonal variation in GI microbiota composition has been documented in humans [49, 50] and other primates [6, 8, 39], as well as in wild mice [51]. This variation can be explained by differential availability of food items associated with variation in ecological conditions. During the dry season, geladas increase consumption of underground storage organs like roots, tubers, and corms, while during the wet season, their diets are more dominated by green plants [13]. The elevated between-sample distances observed during the dry season (Fig. 2a) may thus be attributed to less uniform foraging patterns, perhaps indicative of subtle niche partitioning, that included fewer green plants, more underground food items, and more opportunistic feeding. Elevated GI microbiota diversity during the wet season (Fig. 2b, c) may reflect the need for a more diverse GI microbiota associated with a diet richer in plant fiber [3].

The effects on the GI microbiome of factors like dietary differences, genetic background, and geographical isolation can be difficult to disentangle. There is evidence to suggest that in hominids components of the GI microbiota have cospeciated with their hosts [52], indicating that microbiome-host relationships can be conserved at the species level over evolutionary time. On the other hand, there is ample evidence that the GI microbiota is highly responsive to dietary change [5, 53]. Hale et al. [54] investigated nine species of colobine monkeys held in

captivity at five different locations, finding that their GI microbiotas clustered according to diet/location rather than to phylogeny. Further, Clayton et al. [9] found that the GI microbiotas of primates in a zoo diverged from their wild relatives to become more human-like, demonstrating strong environmental forcing of the GI microbial ecosystem. In our study, the four monkey populations all originate from distinct geographical locations in Ethiopia, with the three *Chlorocebus* species forming a phylogenetically close group. The gelada GI microbiota was clearly distinct from those of the other primates, with Bale monkeys being the most similar to geladas (Fig. 3). The Bale monkeys in this study subsist mainly on the shoots and leaves of bamboo (*Arundinaria alpina*), a species in the family Poaceae which also includes grasses and sedges, although Bale monkeys are not graminivores because they are not grazers [27]. Nevertheless, geladas and Bale monkeys may both be considered ecological specialists with Poaceae as a major dietary component, and the Bale monkey GI microbiota was clearly distinct from that of vervets and grivet. Vervets and grivets are ecological generalists with varied diets of fruit, leaves, and seeds [28]. In addition, some populations raid a variety of human crops [55, 56]. Thus, it is perhaps not surprising that these two species showed the closest similarity to human adults. Human adults in western countries generally have varied diets and lifestyles, which may explain the higher between-sample distances within this group (Fig. 5a). Human infants are known to have dynamic GI microbiotas with a high degree of inter-individual variation [57] which is reflected in the extremely high between-sample distances (Fig. 5a) and the subsequent diffuse clustering (Fig. 3) in this group. This phenomenon has been reported in a previous study [22] and may mean that infants are subject to microbial colonization through random exposure, while adults have stronger selection against opportunistic colonization. Ley et al. [3] documented a diversity gradient from herbivores to omnivores to carnivores, with the highest diversity in herbivores. In agreement with these results, humans harbored much less diverse microbiotas relative to monkeys (Fig. 5b, c), with OTU diversity greatly reduced in human infants relative to human adults, also in keeping with previous work [22].

Baboons, terrestrial, sexually-dimorphic monkeys found throughout Africa, are the closest living relatives of geladas [58] yet are ecological generalists feeding on a variety of fruits, seeds, and leaves. Tung et al. [24] used shotgun metagenomic sequencing to characterize the GI microbiome of two groups of yellow baboons (*Papio cynocephalus*) at Amboseli, Kenya. The phylum level composition of the Amboseli baboon GI microbiota differs markedly from that presented here for geladas. Most notably, *Bacteroidetes*, the dominant phylum in geladas (mean relative abundance of 44.5%), were found to, on average, constitute 7.3% of the

total microbiota diversity in baboons. Also, while *Firmicutes*, *Spirochaetes*, and *Tenericutes* were found at similar levels in geladas and baboons, levels of *Actinobacteria* and *Proteobacteria* were much higher in baboons than in geladas. In our study, the two latter phyla were also found at lower levels in geladas relative to all the other primate groups, suggesting that this may be a distinguishing trait of the gelada GI microbiota. Finally, unlike in geladas, OTUs classified either as *Fibrobacteres* and *Verrucomicrobia* were not found at appreciable levels in baboons. The absence of *Fibrobacteres* in baboons may be a reflection of dietary differences between these closely related primates, but any comparison between our study and the study by Tung et al. should be interpreted with caution since widely different techniques were used for characterizing the microbiotas.

Colobus monkeys are folivores that rely on foregut fermentation [59], and two studies have described the GI microbiota of three different species of colobus monkeys, in the wild, using high-throughput sequencing [60, 61]. In both of these studies, the GI microbiotas were found to be dominated by *Firmicutes* (65–80% relative abundance), and neither study found appreciable levels of *Fibrobacteres* (< 0.01% relative abundance). Thus, colobus monkeys appear substantially different from the geladas and sheep characterized here. It should be noted, however, that both colobus studies were done using 454 pyrosequencing, targeting a different 16S rRNA gene region (V1-V3) than in our study (V4), and any direct comparison with our study should be regarded with caution.

The site of cellulose digestion in the body likely impacts the structure and composition of the GI microbiota. Indeed, a study of the GI microbiotas of 60 mammalian species found that herbivorous species (which make up 80% of extant mammals) clustered into two distinct groups representing hind-gut fermenters and fore-gut fermenters [3]. The results of our study are broadly consistent with this finding. We found limited overlap between geladas and sheep in terms of OTU content (Fig. 6a), indicating that graminoid digestion in primates and ruminants rely on quite different microbial systems. It should be noted that the comparison made in this study was between gelada fecal samples and rumen content from sheep. This comparison is perhaps not ideal, but we can only access the GI microbiota of the wild Guassa geladas by analyzing fecal samples collected non-invasively. We chose to use sheep rumen content since this is the site of cellulose digestion in this species. Furthermore, the microbes of the rumen serve as an important source of protein for ruminants, and as rumen fluid leaves the rumen, much of the microbial content is digested in a stomach chamber known as the abomasum [62]. Thus, fecal material may provide an especially poor representation of the microbial community responsible for digestive function in ruminants. The geladas and domestic sheep also came from very distinct

geographical environments with access to quite different graminoids for food. While factors like these are sure to affect the types of bacteria found in the microbiotas of the sheep and geladas in this study, we believe that the striking differences we observed were more likely a result of their divergent adaptive processes for digesting herbaceous vegetation. The 17 OTUs found in all gelada and sheep samples account for substantial proportions of their respective microbiotas (4.9% for geladas and 3.0% for sheep). Taxonomic classification of these 17 OTUs was generally poor, with only 5 classified to the genus level with an assignment probability of > 0.80. One of these five OTUs had 99% sequence identity to both *Pseudobutyrovibrio ruminis* and *Pseudobutyrovibrio xylanivorans*, bacterial species associated with ruminant digestion [63].

We found that several microbial phyla are highly enriched in geladas relative to the other primates we sampled, which suggests that these bacteria may be critical for the degradation of cellulose and other resistant starches in the graminoids that make up the bulk of the geladas' diet. It is noteworthy that OTUs classified to the phylum *Fibrobacteres* constituted 1.2% of the mean relative abundance in geladas (Fig. 4). This is 10× the abundance of *Fibrobacteres* observed in Bale monkeys, 20× compared to vervets and grivets, 100× the abundance in adult humans, and nearly 10,000× that in human infants. *Fibrobacteres* is an underexplored phylum that is strongly associated with cellulose degradation in ruminants [64], and they made up nearly 10% of the total sheep rumen microbiota in this study (Fig. 7). Interestingly, of the 28 OTUs classified as *Fibrobacteres* in the gelada/sheep data set, 20 were found in sheep while 8 were found in geladas, without a single OTU shared between the two species (Additional file 1: Figure S4). In general, nearly 150 OTUs were shared between at least half the members of each group, while more than 350 were shared between at least 10%, indicating that particular *Fibrobacteres* phylotypes are highly specialized to their host species.

The members of the family *Sphingobacteriaceae* have been isolated from environments as diverse as Arctic soil [65], wood [66], animal guts [67], and feces [68]. These bacteria are known for degrading recalcitrant plant substances [65, 67, 69], and a recent study of the dynamics of rice straw degradation in the cow rumen found that OTUs classified as *Sphingobacteriaceae* were prominent in the rumen fluid during the process [70]. Thus, it is not surprising that these bacteria should be associated with sheep and plant-eating primates, and the fact that they were so highly enriched in geladas relative to the other monkey species, and even sheep, highlights the role of *Sphingobacteriaceae* in the geladas' unique adaptation to graminivory among primates. The poor classification accuracy achieved for these OTUs demonstrates, however, how little we still know about the contribution of this large and diverse group of

bacteria, within the phylum *Bacteroidetes*, to the digestion of plant materials in animal hosts.

16S rRNA sequences classifying to *Verrucomicrobia Subdivision 5* have been found in marine environments [71] and animal digestive systems, including primates [72] and ruminants [73]. However, despite being widespread, this group remains poorly described [74]. Our results suggest that members of *Verrucomicrobia Subdivision 5* may be important contributors to digestive function in both sheep and plant-eating primates.

PICRUSt analysis found that of all the primates in our study, geladas were the most similar to sheep in terms of the composition of KEGG orthologs in the predicted metagenomes. This is not surprising given that the GI microbiotas of geladas and sheep were the most similar. The results of our PICRUSt analysis should, however, be interpreted with caution given the very high NSTI values obtained for geladas. Prediction accuracy has been shown to drop quite sharply with increasing NSTI [30], and thus, it is possible that PICRUSt was unable to produce a realistic representation of the gelada GI metagenome. This result further underlines the uniqueness of the microbial community that forms part of the gelada digestive system. It may be worth mentioning that we observed an apparent gradient in enrichment of KOs dedicated to amino acid metabolism going from graminoid-feeding specialists to ecological generalists. This observation may reflect an increase need for scavenging and synthesizing amino acids in the GI microbiota of animals with reduced protein intake, though additional research will be needed to more thoroughly test this idea.

Our study, while contributing to an emerging literature about the microbiomes of wild animals, also draws attention to the fact that we still know relatively little about many bacterial and archaeal lineages. For example, while there are many recognized and well described species of *Sphingobacteriaceae*, there has been relatively little focus on the members of this bacterial group that are associated with animal GI systems. Moreover, the genus *Fibrobacter*, widely recognized as a key player in ruminant digestion, currently only includes two recognized species, while *Verrucomicrobia Subdivision 5* still lacks a described species. Large-scale efforts to describe genomic diversity across all bacterial and archaeal lineages, based on genome assemblies from shotgun metagenomics data, represent valuable contributions that will help fill in the gaps in our understanding of the natural world of microbes [75]. However, increased efforts toward cultivating species that are not necessarily of medical importance, including those associated with wild animals, will ultimately be needed in order to more fully understand the physiology of the organisms that currently make up the microbial dark matter [76]. These efforts will also strengthen future studies using metagenomics techniques and help us gain a better understanding of important natural processes like cellulose degradation.

Conclusions

Here, we have presented the first study of the GI microbiota of the gelada monkey, the sole surviving species in the *Theropithecus* lineage and the only living primate graminivore. Although geladas are listed as a species of least concern by the IUCN, their rapidly dwindling Afroalpine grassland habitats are under increasing pressure from massive human population growth, agriculture, livestock grazing, and climate change across the Ethiopian Highlands [15]. Thus, it is timely that we gain insight into the digestive system that enables these monkeys to subsist on a graminoid-based diet. This study extends our knowledge about the GI microbiota adaptations required for graminivory, as well as the behavioral and environmental factors that help shape the GI microbiota of these unique social primates.

Methods

Study site

The Guassa Plateau (10° 15′–10° 27′ N; 39° 45′–39° 49′ E) covers 111 km² along the western edge of the Great Rift Valley in the central Ethiopian Highlands at altitudes ranging from 3200 to 3600 m.a.s.l. Guassa is characterized by intact Afroalpine vegetation consisting largely of tall graminoids, forbs, and shrubs [13]. Rainfall averages 1650 ± 243 mm annually with the wet season lasting from July–October and the dry season from November–June [13, 17]. Mean daily low temperatures average 4.3 ± 0.5 °C while mean daily high temperatures average 17.8 ± 0.3 °C¹². Guassa is home to several gelada bands, including one consisting of ~220 members (Steelers Band), which has been followed by researchers on a near-daily basis since January 2007. The area is protected by an ancient indigenous conservation system, and it is also home to a large and varied carnivore community, including leopards (*Panthera pardus*), spotted hyenas (*Crocuta crocuta*), Ethiopian wolves (*Canis simensis*), African wolves (*Canis lupaster*) and servals (*Leptailurus serval*) [77].

Sampling

We collected 316 gelada monkey fecal samples during two 6-week periods, one in the dry season (March–April 2016, *n* = 142) and the other in the wet season (September–October 2016, *n* = 174). Thirty-nine individually recognized animals, all females of reproductive age, were sampled, with each animal sampled 1–12 times at a mean of eight samples per individual. All individuals belonged to one of eight different reproductive units from a single band. The median unit size was six females (range two to nine), and the number of samples collected from each unit ranged from 8 to 84 (mean = 40). Nine of the 39 individuals sampled were classified as old, meaning that they were adults at the time when monitoring of individually known geladas began 10 years earlier. From these monkeys, we obtained a total

of 70 samples, while the remaining 246 samples were from individuals that were classified as prime, meaning that they reached sexual maturity during the study period.

Gelada females go through a 6-month gestation period [78], and each fecal sample was classified according to the reproductive status of the defecating individual at the time of collection. Individuals were classified either as pregnant in the first ($n = 27$), second ($n = 13$), or third ($n = 32$) trimester, cycling (i.e., reproductively receptive, $n = 66$) or going through postpartum amenorrhea (i.e., postnatal infertility, $n = 178$). Eleven of the females had large subcutaneous swellings (coenurosis, $n = 81$) caused by the parasitic tapeworm *Taenia serialis* (see Nguyen et al. [26] for more details), while the remaining 28 animals ($n = 235$) did not show visible symptoms. For each gelada fecal sample, approximately 2–3 g of feces was transferred to a 15 ml sterile plastic vial with ~6–7 ml 96% ethanol, immediately upon defecation. Sample tubes were then stored at ambient temperature at the field research camp prior to transport to the University of Oslo, Norway, for further analysis.

We collected 29 samples from a Bale monkey population in Odobullu Forest, an intact bamboo forest with minimal human disturbance in the Bale mountains of southern Ethiopia [27]. These samples were collected from October 2013 to May 2014, encompassing both wet and dry periods. We also sampled a vervet population (11 samples) living in the rural area of Sof Omar directly east of the Bale mountains, and a grivet population (13 samples) from the area around the city of Awassa west of the Bale mountains. Both Sof Omar and Awassa represent habitats with a high degree of human influence, including agriculture, livestock grazing, and tourism (A. Mekonnen, pers. observ.). The Awassa samples were collected in April 2016, while Sof Omar samples were collected in July of the same year. As with the gelada samples, Bale monkey, vervet, and grivet fecal samples were stored in tubes with 96% ethanol prior to transport to Oslo for further processing and analysis.

Human fecal samples were obtained from 11 adult volunteers (30–40 years old) and 10 infants of approximately 1 year of age in Oslo, Norway. All samples were collected within a 1-week period and frozen directly upon collection pending further processing. At the time of sampling, none of the human volunteers were using antibiotics or were known to suffer from any serious disease or immunocompromised status.

Sheep rumen content samples were obtained from 29 freshly slaughtered animals at Furuset AS slaughterhouse outside of Oslo in mid-January 2016. The sheep were approximately 1 year old and came from three different farms in the Gudbrandsdalen area in central Norway. Norwegian sheep farming relies on extensive use of natural open range pastures during spring and summer, where nearly half of

the total annual feed is consumed. Rumen samples were frozen on dry ice directly upon collection and transported to a storage facility at the University of Oslo.

DNA extraction and sequencing

DNA extraction from all samples was carried out with the PowerSoil 96 well DNA isolation kit (MO BIO Laboratories Inc., Carlsbad, CA, USA), per instructions provided by the manufacturer. Library preparation for Illumina sequencing of the V4 region of the 16S rRNA gene was carried out according to de Muinck et al. [34]. Sequencing was carried out on an Illumina HiSeq 2500 apparatus (Illumina, San Diego, CA, USA) using the 2x250PE rapid run mode and 10% PhiX spike-in. For the geladas, the mean per sample read number was 170,362 ($\pm 75,585$ s.d.) after quality trimming, paired read merging, and chimera removal. The corresponding numbers were 137,277 ($\pm 31,096$) for Bale monkeys, 132,994 ($\pm 24,038$) for vervets, 133,241 ($\pm 29,109$) for grivets, 151,282 ($\pm 26,206$) for human adults, 170,492 ($\pm 34,179$) for human infants, and 151,589 ($\pm 32,949$) for sheep.

Data processing and statistical analyses

Low quality reads were trimmed and Illumina adapters were removed using Trimmomatic v0.36 [79] with default settings. Reads mapping to the PhiX genome (NCBI id: NC_001422.1) were removed using BBDNA v36.02 [80]. De-multiplexing of data based on the dual index sequences was carried out using custom scripts [34]. Internal barcodes and spacers were removed using cutadapt v1.4.1 [81], and paired reads were merged using FLASH v1.2.11 [82] with default settings.

Further processing of sequence data was carried out using a combination of vsearch v2.0.3 [83] and usearch v9.2.64 [84]. Specifically, dereplication was performed with the “derep_fulllength” function in vsearch with the minimum unique group size set to 2. Operational taxonomic unit (OTU) clustering, chimera removal, taxonomic assignment, and OTU table building were carried out using the uparse pipeline [85] in usearch. OTU clustering was carried out in one step using the entire data set. Taxonomic assignment to the genus level was done against the RDP-15 training set. OTUs with a domain-level assignment probability < 0.95 were removed as likely artifacts. OTUs classified as chloroplast 16S rRNA genes were also excluded from further analysis. Classification to the species level was done by BLASTing [86] against the GenBank 16S rRNA gene database (query coverage $\geq 99\%$, e -value $< 1e-125$). Between-sample differences in sequencing library size were normalized by common scaling [87]. This entails multiplying all OTU counts for a given library with the ratio of the smallest library size in the entire data set to the size of the individual library. This procedure replaces

rarefying (i.e., random sub-sampling to the lowest number of reads) as it produces the library scaling one would achieve by averaging over an infinite number of repeated sub-samplings. Library size scaling was carried out using a smallest library size of 50,662 reads. After scaling, the data were filtered to retain only OTUs with at least 0.01% relative abundance in at least one sample (i.e., at least five reads), in order to eliminate OTU artifacts. This filtering step was done separately depending on the comparisons being made (e.g., geladas vs. sheep, sheep vs. all primates etc.).

All statistical tests were done in R [88]. We used Permutational Multivariate Analysis of Variance Using Distance Matrices (PERMANOVA) to evaluate the effects of a number of important extrinsic and intrinsic variables on the gelada GI microbiota, including (a) social unit membership (1–8), (b) age group, (c) reproductive condition, (d) parasitic tapeworm disease status, as well as (e) season of sample collection. PERMANOVA tests were carried out using the “adonis” function in the “vegan” package, using Bray–Curtis or UniFrac dissimilarities and 1000 permutations. To account for pseudoreplication, the individual identifiers of the monkeys were included as a blocking variable in the “strata” argument of the “adonis” function. This was done for all PERMANOVA tests except the one for individual effects. Non-metric multidimensional scaling (NMDS) of Bray–Curtis distance matrices was carried out using the “isoMDS” function in the “MASS” package. Exact tests for differences in means between two groups of negative binomially distributed counts were carried out using the edgeR package [89]. Although originally developed for analysis of differential expression in RNA sequencing experiments, this method has been shown to perform well in identifying enriched OTUs in 16S rRNA amplicon sequencing experiments as well [87]. In order to focus on the most prevalent OTUs, the exact test comparing geladas to other primates was carried out on OTUs that were found at $\geq 0.1\%$ relative abundance in ≥ 10 individuals (the sample size of the smallest group that was included in the comparison) in the combined data set. For the test comparing gelada in the dry and wet seasons, we included OTUs that were found at $\geq 0.1\%$ relative abundance in ≥ 79 samples (25% of the total gelada sample number). An OTU was considered enriched if both the p value and false discovery rate were < 0.01 . UniFrac distances were computed using the “GUniFrac” function in the “GUniFrac” package [90]. For constructing the phylogenies upon which the Unifrac distances were based, sequences were aligned using MUSCLE [91] and a neighbor joining tree [92] was constructed using MEGA v7.0.26 [93]. The phylogeny of OTUs classified to the phylum Fibrobacteres was constructed in the same fashion. Metagenomes were predicted using Phylogenetic Investigation of Communities by Reconstruction of Unobserved States

(PICRUSt 1.1.1) [30] after normalizing for 16S rRNA gene copy number. Oligotyping was done using the DADA2 R-package [29] with default parameters. DADA2 recognized 58,584 sequence variants, and for analysis of the data, the abundance table was filtered to retain only sequence variants that were observed with at least 50 reads in at least one sample. Finally, all comparisons above the OTU level were done excluding OTUs that could not be classified to the phylum level with an assignment probability over 0.5.

Additional file

Additional file 1: The document contains Figs. S1–S17 and Tables S1–S10. (PDF 502 kb)

Acknowledgements

PJF thanks the U.S.-Norway Fulbright Foundation for their financial support and for making the international collaboration in Oslo that led to this research possible. We thank the Ethiopian Wildlife Conservation Authority, Amhara Regional government, and Mehal Meda *Woreda* for permission to conduct this research and the Department of Zoological Sciences of Addis Ababa University for logistical support. Metike Basasen, Badiloo Muluyee, Ngadaso Subsebey, Bantiika Tessema, Shoafera Tessema, Talegeta Wolde-Hanna, Tasso Wudimagegn, and volunteers with the Guassa Gelada Research Project provided vital assistance in the field. G. Anita Eriksen provided helpful assistance with fecal sample collection during the rainy season at Guassa. James C. Ha designed the custom software program used to collect the behavioral data on geladas. We would like to thank Rune Morten Johansen and Birgitte Granberg at Furuseth AS for their invaluable help with the collection of the sheep samples, and we would like to thank Stein Myhrsvveen and Hege Trosvik for facilitating this sampling effort. We would also like to thank the human volunteers that contributed sample material to this study.

Funding

This study was funded by Research Council of Norway grant 230796/F20, Rufford Small Grants 11727-1, and the People’s Trust for Endangered Species. We also thank Dean Gibson and San Diego Zoo, California State University Fullerton, Margot Marsh Biodiversity Foundation, Primate Conservation Inc., and Gisela and Norman Fashing for their financial support of the gelada research at Guassa.

Availability of data and materials

All sequence data used in this study are available at the NCBI Sequence Read Archive. The gelada sequences have BioProject ID PRJNA418114. The *Chlorocebus* sequences have BioProject ID PRJNA407723. The sheep sequences have BioProject ID PRJNA387129. The human sequences have BioProject ID PRJNA417908.

Authors’ contributions

PT, EDM, EKR, PJF, and NN developed the study concept and design. PJF, NN, ECB, KRC, JBK, THT, and AM carried out field work. PT, EDM, EKR, and NN carried out the lab work. PT, EDM, EKR, PJF, and NN carried out data analysis. PT, EDM, EKR, NN, PJF, and VV wrote the paper. All authors read and approved the final manuscript.

Ethics approval

Permission to conduct this research was granted by the Ethiopian Wildlife Conservation Authority in compliance with the Convention on International Trade in Endangered Species of Wild Fauna and Flora (CITES). Monkey fecal samples were collected non-invasively without harming or disturbing the animals. This study meets all animal care policies and adheres to the legal requirements of Ethiopia and Norway. It also complies with the ethical and legal requirements of the American Society of Primatologists Principles for the Ethical Treatment of Non-Human Primates. Sampling of human fecal material was approved by the Norwegian Regional Committee for Medical and Health Ethics, project 2014/656.

Competing interests

The authors declare that they have no competing interests.

Publisher's Note

Springer Nature remains neutral with regard to jurisdictional claims in published maps and institutional affiliations.

Author details

¹Department of Biosciences, Centre for Ecological and Evolutionary Synthesis (CEES), University of Oslo, P.O. Box 1066, Oslo, Norway. ²Department of Anthropology and Environmental Studies Program, California State University Fullerton, Fullerton, CA, USA. ³Department of Anthropology, University of California, Santa Barbara, Santa Barbara, CA, USA. ⁴Bwindi Gorilla Project, Bwindi Impenetrable National Park, Kanungu, Uganda. ⁵Department of Anthropology, University of Wisconsin-Madison, Madison, WI, USA. ⁶Cleve Lodge, Minster Road, Ramsgate, Kent CT12 4BA, England. ⁷Department of Biology, Bahir Dar University, Bahir Dar, Ethiopia. ⁸Department of Zoological Sciences, Addis Ababa University, Addis Ababa, Ethiopia. ⁹Department of Human Evolutionary Biology, Harvard University, Cambridge, MA, USA.

Received: 7 December 2017 Accepted: 26 April 2018

Published online: 05 May 2018

References

- Sommer F, Backhed F. The gut microbiota—masters of host development and physiology. *Nat Rev Microbiol*. 2013;11(4):227–38.
- Sender R, Fuchs S, Milo R. Are we really vastly outnumbered? Revisiting the ratio of bacterial to host cells in humans. *Cell*. 2016;164(3):337–40.
- Ley RE, Hamady M, Lozupone C, Turnbaugh PJ, Ramey RR, Bircher JS, Schlegel ML, Tucker TA, Schrenzel MD, Knight R, et al. Evolution of mammals and their gut microbes. *Science*. 2008;320(5883):1647–51.
- Muegge BD, Kuczynski J, Knights D, Clemente JC, Gonzalez A, Fontana L, Henrissat B, Knight R, Gordon JI. Diet drives convergence in gut microbiome functions across mammalian phylogeny and within humans. *Science*. 2011;332(6032):970–4.
- David LA, Maurice CF, Carmody RN, Gootenberg DB, Button JE, Wolfe BE, Ling AV, Devlin AS, Varna Y, Fischbach MA, et al. Diet rapidly and reproducibly alters the human gut microbiome. *Nature*. 2014;505(7484):559–.
- Amato KR, Leigh SR, Kent A, Mackie RI, Yeoman CJ, Stumpf RM, Wilson BA, Nelson KE, White BA, Garber PA. The gut microbiota appears to compensate for seasonal diet variation in the wild black howler monkey (*Alouatta pigra*). *Microb Ecol*. 2015;69(2):434–43.
- Amato KR, Yeoman CJ, Kent A, Righini N, Carbonero F, Estrada A, Gaskins HR, Stumpf RM, Yildirim S, Torralba M, et al. Habitat degradation impacts black howler monkey (*Alouatta pigra*) gastrointestinal microbiomes. *Isme J*. 2013;7(7):1344–53.
- Sun B, Wang X, Bernstein S, Huffman MA, Xia DP, Gu Z, Chen R, Sheeran LK, Wagner RS, Li J. Marked variation between winter and spring gut microbiota in free-ranging Tibetan Macaques (*Macaca thibetana*). *Sci Rep*. 2016;6:26035.
- Clayton JB, Vangay P, Huang H, Ward T, Hillmann BM, Al-Ghalith GA, Travis DA, Long HT, Tuan BV, Minh VV, et al. Captivity humanizes the primate microbiome. *P Natl Acad Sci USA*. 2016;113(37):10376–81.
- Stevens CE, Hume ID. Comparative physiology of the vertebrate digestive system, 2nd edn. Cambridge; New York: Cambridge University Press; 2004.
- Lambert JE. Primate digestion: interactions among anatomy, physiology, and feeding ecology. *Evol Anthropol*. 1998;7(1):8–20.
- D'Amore R, Ijaz UZ, Schirmer M, Kenny JG, Gregory R, Darby AC, Shakya M, Podar M, Quince C, Hall N. A comprehensive benchmarking study of protocols and sequencing platforms for 16S rRNA community profiling. *BMC Genomics*. 2016;17:55.
- Fashing PJ, Nguyen N, Venkataraman WV, Kerby JT. Gelada feeding ecology in an intact ecosystem at Guassa, Ethiopia: variability over time and implications for theropithec and hominin dietary evolution. *Am J Phys Anthropol*. 2014;155(1):1–16.
- Jablonski NG. *Theropithecus: the rise and fall of a primate genus*. Cambridge: Cambridge University Press; 1993.
- Bergman TJ, Beehner JC. *Theropithecus gelada Gelada Baboon*. In: Butynski TM, Kingdon J, editors. *Mammals of Africa*, volume 2, Primates. J. K. London: Bloomsbury Publishing; 2013. p. 240–4.
- Mau M, Johann A, Sliwa A, Hummel J, Sudekum KH. Morphological and physiological aspects of digestive processes in the graminivorous primate *Theropithecus gelada*-a preliminary study. *Am J Primatol*. 2011;73(5):449–57.
- Venkataraman WV, Glowacka H, Fritz J, Claus M, Seyoum C, Nguyen N, Fashing PJ. Effects of dietary fracture toughness and dental wear on chewing efficiency in geladas (*Theropithecus gelada*). *Am J Phys Anthropol*. 2014;155(1):17–32.
- Souron A. Morphology, diet, and stable carbon isotopes: on the diet of *Theropithecus* and some limits of uniformitarianism in paleoecology. *Am J Phys Anthropol*. 2018;
- Wrangham RW. Bipedal locomotion as a feeding adaptation in gelada baboons, and its implications for hominid evolution. *J Hum Evol*. 1980;9(4):329–31.
- Frost GS, Walton GE, Swann JR, Psichas A, Costabile A, Johnson LP, Sponheimer M, Gibson GR, Barraclough TG. Impacts of plant-based foods in ancestral hominin diets on the metabolism and function of gut microbiota in vitro. *MBio*. 2014;5(3):e00853–14.
- Kawai M, Ohsawa H, Mori U, Dunbar R. Social organization of gelada baboons: social units and definitions. *Primates*. 1983;24:13–24.
- Yatsunenkov T, Rey FE, Manary MJ, Trehan I, Dominguez-Bello MG, Contreras M, Magris M, Hidalgo G, Baldassano RN, Anokhin AP, et al. Human gut microbiome viewed across age and geography. *Nature*. 2012;486(7402):222–7.
- Song SJ, Lauber C, Costello EK, Lozupone CA, Humphrey G, Berg-Lyons D, Caporaso JG, Knights D, Clemente JC, Nakiely S, et al. Cohabiting family members share microbiota with one another and with their dogs. *elife*. 2013;2:e00458.
- Tung J, Barreiro LB, Burns MB, Grenier JC, Lynch J, Grieneisen LE, Altmann J, Alberts SC, Blekhnman R, Archie EA. Social networks predict gut microbiome composition in wild baboons. *elife*. 2015;4
- Moeller AH, Foerster S, Wilson ML, Pusey AE, Hahn BH, Ochman H. Social behavior shapes the chimpanzee pan-microbiome. *Sci Adv*. 2016;2(1):e1500997.
- Nguyen N, Fashing PJ, Boyd DA, Barry TS, Burke RJ, Goodale CB, Jones SCZ, Kerby JT, Kellogg BS, Lee LM, et al. Fitness impacts of tapeworm parasitism on wild gelada monkeys at Guassa, Ethiopia. *Am J Primatol*. 2015;77(5):579–94.
- Mekonnen A, Bekele A, Fashing PJ, Hemson G, Atickem A. Diet, activity patterns, and ranging ecology of the bale monkey (*Chlorocebus djamdjamensis*) in Odobullu Forest, Ethiopia. *Int J Primatol*. 2010;31(3):339–62.
- Jaffe KE, Isbell LA. The guenons: polyspecific associations in socioecological perspective. In: Campbell CJ, Fuentes A, MacKinnon SK, Bearder SK, Stumpf RM, editors. *Primates in perspective*. Oxford: Oxford University Press; 2011. p. 277–300.
- Callahan BJ, McMurdie PJ, Rosen MJ, Han AW, Johnson AJ, Holmes SP. DADA2: high-resolution sample inference from Illumina amplicon data. *Nat Methods*. 2016;13(7):581–3.
- Langille MG, Zaneveld J, Caporaso JG, McDonald D, Knights D, Reyes JA, Clemente JC, Burkepile DE, Vega Thurber RL, Knight R, et al. Predictive functional profiling of microbial communities using 16S rRNA marker gene sequences. *Nat Biotechnol*. 2013;31(9):814–21.
- van der Werf MJ, Swarts HJ, de Bont JA. *Rhodococcus erythropolis* DCL14 contains a novel degradation pathway for limonene. *Appl Environ Microbiol*. 1999;65(5):2092–102.
- Lynd LR, Weimer PJ, van Zyl WH, Pretorius IS. Microbial cellulose utilization: fundamentals and biotechnology. *Microbiol Mol Biol Rev*. 2002;66(3):506–77. table of contents
- David LA, Materna AC, Friedman J, Campos-Baptista MI, Blackburn MC, Perrotta A, Erdman SE, Alm EJ. Host lifestyle affects human microbiota on daily timescales. *Genome Biol*. 2014;15(7):R89.
- de Muinck EJ, Trosvik P, Gilfillan GD, Hov JR, Sundaram AYM. A novel ultra high-throughput 16S rRNA gene amplicon sequencing library preparation method for the Illumina HiSeq platform. *Microbiome*. 2017;5(1):68.
- Schreier AL, Swedell L. The fourth level of social structure in a multi-level society: ecological and social functions of clans in *Hamadryas* baboons. *Am J Primatol*. 2009;71(11):948–55.
- Kirkpatrick RC, Grueter CC. Snub-nosed monkeys: multi-level societies across varied environments. *Evol Anthropol*. 2010;19:98–113.
- de Silva S, Wittemyer G. A comparison of social organization in Asian elephants and African savannah elephants. *Int J Primatol*. 2012;33(5):1125–41.
- Degnan PH, Pusey AE, Lonsdorf EV, Goodall J, Wroblewski EE, Wilson ML, Rudicell RS, Hahn BH, Ochman H. Factors associated with the diversification of the gut microbial communities within chimpanzees from Gombe National Park. *Proc Natl Acad Sci U S A*. 2012;109(32):13034–9.
- Springer A, Fichtel C, Al-Ghalith GA, Koch F, Amato KR, Clayton JB, Knights D, Kappeler PM. Patterns of seasonality and group membership characterize the gut microbiota in a longitudinal study of wild Verreaux's sifakas (*Propithecus verreauxi*). *Ecology and Evolution*. 2017;7(15):5732–45.

40. Claesson MJ, Cusack S, O'Sullivan O, Greene-Diniz R, de Weerd H, Flannery E, Marchesi JR, Falush D, Dinan T, Fitzgerald G, et al. Composition, variability, and temporal stability of the intestinal microbiota of the elderly. *Proc Natl Acad Sci U S A*. 2011;108(Suppl 1):4586–91.
41. Odamaki T, Kato K, Sugahara H, Hashikura N, Takahashi S, Xiao JZ, Abe F, Osawa R. Age-related changes in gut microbiota composition from newborn to centenarian: a cross-sectional study. *BMC Microbiol*. 2016;16:90.
42. Bennett G, Malone M, Sauther ML, Cuzzo FP, White B, Nelson KE, Stumpf RM, Knight R, Leigh SR, Amato KR. Host age, social group, and habitat type influence the gut microbiota of wild ring-tailed lemurs (*Lemur catta*). *Am J Primatol*. 2016;78(8):883–92.
43. Kleessen B, Sykura B, Zunft HJ, Blaut M. Effects of inulin and lactose on fecal microflora, microbial activity, and bowel habit in elderly constipated persons. *Am J Clin Nutr*. 1997;65(5):1397–402.
44. Shanley DP, Aw D, Manley NR, Palmer DB. An evolutionary perspective on the mechanisms of immunosenescence. *Trends Immunol*. 2009;30(7):374–81.
45. Mor G, Cardenas I. The immune system in pregnancy: a unique complexity. *Am J Reprod Immunol*. 2010;63(6):425–33.
46. Newbern D, Freemark M. Placental hormones and the control of maternal metabolism and fetal growth. *Curr Opin Endocrinol Diabetes Obes*. 2011;18(6):409–16.
47. Koren O, Goodrich JK, Cullender TC, Spor A, Laitinen K, Backhed HK, Gonzalez A, Werner JJ, Angenent LT, Knight R, et al. Host remodeling of the gut microbiome and metabolic changes during pregnancy. *Cell*. 2012;150(3):470–80.
48. Avelo T, Norberg A. Parasite-microbiota interactions potentially affect intestinal communities in wild mammals. *J Anim Ecol*. 2017;
49. Davenport ER, Mizrahi-Man O, Michelini K, Barreiro LB, Ober C, Gilad Y. Seasonal variation in human gut microbiome composition. *PLoS One*. 2014;9(3):e90731.
50. Smits SA, Leach J, Sonnenburg ED, Gonzalez CG, Lichtman JS, Reid G, Knight R, Manjurano A, Chagalucha J, Elias JE, et al. Seasonal cycling in the gut microbiome of the Hadza hunter-gatherers of Tanzania. *Science*. 2017;357(6353):802–6.
51. Maurice CF, Knowles SC, Ladau J, Pollard KS, Fenton A, Pedersen AB, Turnbaugh PJ. Marked seasonal variation in the wild mouse gut microbiota. *ISME J*. 2015;9(11):2423–34.
52. Moeller AH, Caro-Quintero A, Mjungu D, Georgiev AV, Lonsdorf EV, Muller MN, Pusey AE, Peeters M, Hahn BH, Ochman H. Cospeciation of gut microbiota with hominids. *Science*. 2016;353(6297):380–2.
53. Wu GD, Chen J, Hoffmann C, Bittinger K, Chen YY, Keilbaugh SA, Bewtra M, Knights D, Walters WA, Knight R, et al. Linking long-term dietary patterns with gut microbial enterotypes. *Science*. 2011;334(6052):105–8.
54. Hale VL, Tan CL, Niu K, Yang Y, Knight R, Zhang Q, Cui D, Amato KR. Diet versus phylogeny: a comparison of gut microbiota in captive Colobine monkey species. *Microb Ecol*. 2018;75(2):515–27.
55. Saj TL, Sicotte P, Paterson JD. The conflict between vervet monkeys and farmers at the forest edge in Entebbe, Uganda. *Afr J Ecol*. 2001;39:195–9.
56. Wallace GE, Hill CM. Crop damage by primates: quantifying the key parameters of crop-raiding events. *PLoS One*. 2012;7(10):e46636.
57. Palmer C, Bik EM, DiGiulio DB, Relman DA, Brown PO. Development of the human infant intestinal microbiota. *PLoS Biol*. 2007;5(7):e177.
58. Groves CP. Primate taxonomy. Washington, DC: Smithsonian Institution Press; 2001.
59. Chivers D. Functional anatomy of the gastrointestinal tract. In: Davies AGOJ, editor. *Colobine monkeys: their ecology, behaviour and evolution*. Cambridge: Cambridge University Press; 1994. p. 205–27.
60. Yildirim S, Yeoman CJ, Sijos M, Torralba M, Wilson BA, Goldberg TL, Stumpf RM, Leigh SR, White BA, Nelson KE. Characterization of the fecal microbiome from non-human wild primates reveals species specific microbial communities. *PLoS One*. 2010;5(11):e13963.
61. Barelli C, Albanese D, Donati C, Pindo M, Dallago C, Rovero F, Cavalieri D, Tuohy KM, Hauffe HC, De Filippo C. Habitat fragmentation is associated to gut microbiota diversity of an endangered primate: implications for conservation. *Sci Rep*. 2015;5:14862.
62. Hungate RE. The rumen microbial ecosystem. *Annu Rev Ecol Syst*. 1975;6:39–66.
63. Grilli DJ, Ceron ME, Paez S, Egea V, Schnittger L, Cravero S, Escudero MS, Allegretti L, Arenas GN. Isolation of *Pseudobutyrvibrio ruminis* and *Pseudobutyrvibrio xylanivorans* from rumen of creole goats fed native forage diet. *Folia Microbiol*. 2013;58(5):367–73.
64. Ransom-Jones E, Jones DL, McCarthy AJ, McDonald JE. The Fibrobacteres: an important phylum of cellulose-degrading bacteria. *Microb Ecol*. 2012;63(2):267–81.
65. Prasad S, Manasa BP, Buddhi S, Pratibha MS, Begum Z, Bandi S, Tirunagari P, Shivaji S. *Arcticibacter svalbardensis* gen. nov., sp. nov., of the family Sphingobacteriaceae in the phylum Bacteroidetes, isolated from Arctic soil. *Int J Syst Evol Microbiol*. 2013;63(Pt 5):1627–32.
66. Paiva G, Abreu P, Proenca DN, Santos S, Nobre MF, Morais PV. *Mucilaginibacter pineti* sp. nov., isolated from Pinus pinaster wood from a mixed grove of pines trees. *Int J Syst Evol Microbiol*. 2014;64(Pt 7):2223–8.
67. Zhou JP, Meng K, Yang PL, Shi PJ, Wang YR, Luo HY, Yao B. Characterization of a chromosomal segment showing xylanolytic activity from the symbiotic *Sphingobacterium* sp TN19. *World J Microb Biot*. 2010;26(4):761–5.
68. Li GD, Chen X, Li QY, Xu FJ, Qiu SM, Jiang Y, Jiang CL. *Sphingobacterium rhinocerotis* sp. nov., isolated from the faeces of *Rhinoceros unicornis*. *Antonie Van Leeuwenhoek*. 2015;108(5):1099–105.
69. Cui CH, Liu QM, Kim JK, Sung BH, Kim SG, Kim SC, Im WT. Identification and characterization of a *Mucilaginibacter* sp. strain QM49 beta-glucosidase and its use in the production of the pharmaceutically active minor ginsenosides (S)-Rh1 and (S)-Rg2. *Appl Environ Microbiol*. 2013;79(19):5788–98.
70. Cheng Y, Wang Y, Li Y, Zhang Y, Liu T, Wang Y, Sharpton TJ, Zhu W. Progressive colonization of bacteria and degradation of rice straw in the rumen by Illumina sequencing. *Front Microbiol*. 2017;8:2165.
71. Cardman Z, Arnosti C, Durbin A, Zierovogel K, Cox C, Steen AD, Teske A. *Verrucomicrobia* are candidates for polysaccharide-degrading bacterioplankton in an arctic fjord of Svalbard. *Appl Environ Microbiol*. 2014;80(12):3749–56.
72. Frey JC, Rothman JM, Pell AN, Nizeyi JB, Cranfield MR, Angert ER. Fecal bacterial diversity in a wild gorilla. *Appl Environ Microbiol*. 2006;72(5):3788–92.
73. Fouts DE, Szpakowski S, Purushe J, Torralba M, Waterman RC, MacNeil MD, Alexander LJ, Nelson KE. Next generation sequencing to define prokaryotic and fungal diversity in the bovine rumen. *PLoS One*. 2012;7(11):e48289.
74. Spring S, Bunk B, Sproer C, Schumann P, Rohde M, Tindall BJ, Klenk HP. Characterization of the first cultured representative of *Verrucomicrobia* subdivision 5 indicates the proposal of a novel phylum. *ISME J*. 2016;10(12):2801–16.
75. Parks DH, Rinke C, Chuvochina M, Chaumeil PA, Woodcroft BJ, Evans PN, Hugenholtz P, Tyson GW. Recovery of nearly 8,000 metagenome-assembled genomes substantially expands the tree of life. *Nat Microbiol*. 2017;2(11):1533–42.
76. Mukherjee S, Seshadri R, Varghese NJ, Eloe-Fadrosch EA, Meier-Kolthoff JP, Goker M, Coates RC, Hadjithomas M, Pavlopoulos GA, Paez-Espino D, et al. 1,003 reference genomes of bacterial and archaeal isolates expand coverage of the tree of life. *Nat Biotechnol*. 2017;35(7):676–83.
77. Ashenafi Z. Common property resource management of an Afro-Alpine habitat supporting a population of the critically endangered Ethiopian wolf doctoral. Kent: University of Kent; 2001.
78. Roberts EK, Lu A, Bergman TJ, Beehner JC. A Bruce effect in wild geladas. *Science*. 2012;335(6073):1222–5.
79. Bolger AM, Lohse M, Usadel B. Trimmomatic: a flexible trimmer for Illumina sequencing data. *Bioinformatics*. 2014;30(15):2114–20.
80. Bushnell B. BBMap short read aligner. 2016. <http://sourceforge.net/projects/bbmap>.
81. Martin M. Cutadapt removes adapter sequences from high-throughput sequencing reads. *EMBnetjournal*. 2011;17(1):10–12.
82. Magoc T, Salzberg SL. FLASH: fast length adjustment of short reads to improve genome assemblies. *Bioinformatics*. 2011;27(21):2957–63.
83. Rognes TF, T, Nichols B, Quince C, Mahé F. VSEARCH: a versatile open source tool for metagenomics. *PeerJ Preprints*. 2016;4:e2409v1.
84. Edgar RC. Search and clustering orders of magnitude faster than BLAST. *Bioinformatics*. 2010;26(19):2460–1.
85. Edgar RC. UPARSE: highly accurate OTU sequences from microbial amplicon reads. *Nat Methods*. 2013;10(10):996–8.
86. Altschul SF, Gish W, Miller W, Myers EW, Lipman DJ. Basic local alignment search tool. *J Mol Biol*. 1990;215(3):403–10.
87. McMurdie PJ, Holmes S. Waste not, want not: why rarefying microbiome data is inadmissible. *PLoS Comput Biol*. 2014;10(4):e1003531.
88. R Core Team. R: a language and environment for statistical computing. Vienna: R Foundation for Statistical Computing; 2016.
89. Robinson MD, McCarthy DJ, Smyth GK. edgeR: a Bioconductor package for differential expression analysis of digital gene expression data. *Bioinformatics*. 2010;26(1):139–40.

90. Chen J, Bittinger K, Charlson ES, Hoffmann C, Lewis J, Wu GD, Collman RG, Bushman FD, Li H. Associating microbiome composition with environmental covariates using generalized UniFrac distances. *Bioinformatics*. 2012;28(16):2106–13.
91. Edgar RC. MUSCLE: multiple sequence alignment with high accuracy and high throughput. *Nucleic Acids Res*. 2004;32(5):1792–7.
92. Tamura K, Nei M, Kumar S. Prospects for inferring very large phylogenies by using the neighbor-joining method. *Proc Natl Acad Sci U S A*. 2004;101(30):11030–5.
93. Kumar S, Stecher G, Tamura K. MEGA7: molecular evolutionary genetics analysis version 7.0 for bigger datasets. *Mol Biol Evol*. 2016;33(7):1870–4.

Ready to submit your research? Choose BMC and benefit from:

- fast, convenient online submission
- thorough peer review by experienced researchers in your field
- rapid publication on acceptance
- support for research data, including large and complex data types
- gold Open Access which fosters wider collaboration and increased citations
- maximum visibility for your research: over 100M website views per year

At BMC, research is always in progress.

Learn more biomedcentral.com/submissions

