

Prabin BHANDARI^a, Yadav UPRETY^{a,*} and Lokesh Ratna SHAKYA^b: *Platanthera carnosilabris* (*Orchidaceae*), an Addition to the Flora of Nepal

^aState Key Laboratory of Systematic and Evolutionary Botany, Institute of Botany, Chinese Academy of Sciences, Beijing, 100093 CHINA;

^bUniversity of Chinese Academy of Sciences, Beijing, 100049 CHINA

*Corresponding author: yadavuprety@gmail.com

(Accepted on September 26, 2018)

Summary: An orchid species, *Platanthera carnosilabris* (Tang & F. T. Wang) X. H. Jin, Schuit. & W. T. Jin, collected from Topkegola, Taplejung District, E. Nepal within the Kangchenjunga Landscape is reported as a new record for flora of Nepal. This finding also shows the westernmost distribution of this species.

Platanthera Rich. (*Orchidaceae*; tribe *Orchideae*) is a small- to medium-sized terrestrial orchid genus comprising about 200 species distributed in north temperate Asia, the Malay Archipelago, New Guinea, Europe, N. Africa, Australia and N. America (Chen et al. 2009, Efimov 2016). In Asia, the genus *Platanthera* is represented by 78 species mostly restricted to higher elevations; out of them, 30 species have Himalayan distribution (Efimov 2016). Rajbhandari (2015) reported 13 species of *Platanthera* in Nepal. However the number has been increased to 18 with the subsequent publications of Raskoti (2015) and Efimov (2016). The distribution of *Platanthera* in Nepal Himalaya is mostly concentrated in the central and eastern zone between 600–4800 m (Press et al. 2000, Rajbhandari 2015, Shrestha et al. 2018).

While studying the distribution and conservation status of endemic species of Mewa Khola valley, Taplejung District, E. Nepal within the Kangchenjunga Landscape (Chaudhary et al. 2015), an unfamiliar *Platanthera* was collected near Topkegola at an altitude of ca. 3400 m in *Rhododendron-Abies* forest. After checking

specimens and literature (e.g., Chen et al. 2009, Jin et al. 2014), the species was identified as *P. carnosilabris* (Tang & F. T. Wang) X. H. Jin, Schuit. & W. T. Jin. *Platanthera carnosilabris* resembles *P. orbicularis* (Hook. f.) X. H. Jin, Schuit. & Raskoti in having small secund flowers, lip with conic spur, but is distinguished by its uniformly green leaves and the ovate-lanceolate lip. The occurrence of *P. carnosilabris* has not been reported from Nepal Himalaya (Hara et al. 1978, Banerji 1982, Ohba and Akiyama 1992, Press et al. 2000, Rokaya et al. 2013, Rajbhandari 2015, Efimov 2016, Shrestha et al. 2018). Therefore, *P. carnosilabris* is treated here as a new record for the Flora of Nepal, and this finding shows the westernmost distribution for the taxon.

Platanthera carnosilabris (Tang & F. T. Wang) X. H. Jin, Schuit. & W. T. Jin in Molec. Phylogen. Evol. 77: 51 (2014). [Fig. 1]

Basionym: *Herminium carnosilabre* Tang & F. T. Wang in Bull. Fan Mem. Inst. Biol. Bot. 10: 32 (1940).

Type: China. Salwin–Kiukiang, NE of Sinpee (T. T. Yu 20244A, 14 Sept. 1938, PE–holotype, n.v.).

Flowering: August–September.

Distribution: Nepal (Taplejung District) and China (Yunnan).

Ecology: Terrestrial on humus-rich soil in *Rhododendron-Abies* forest

Specimen examined: EAST NEPAL. Taplejung

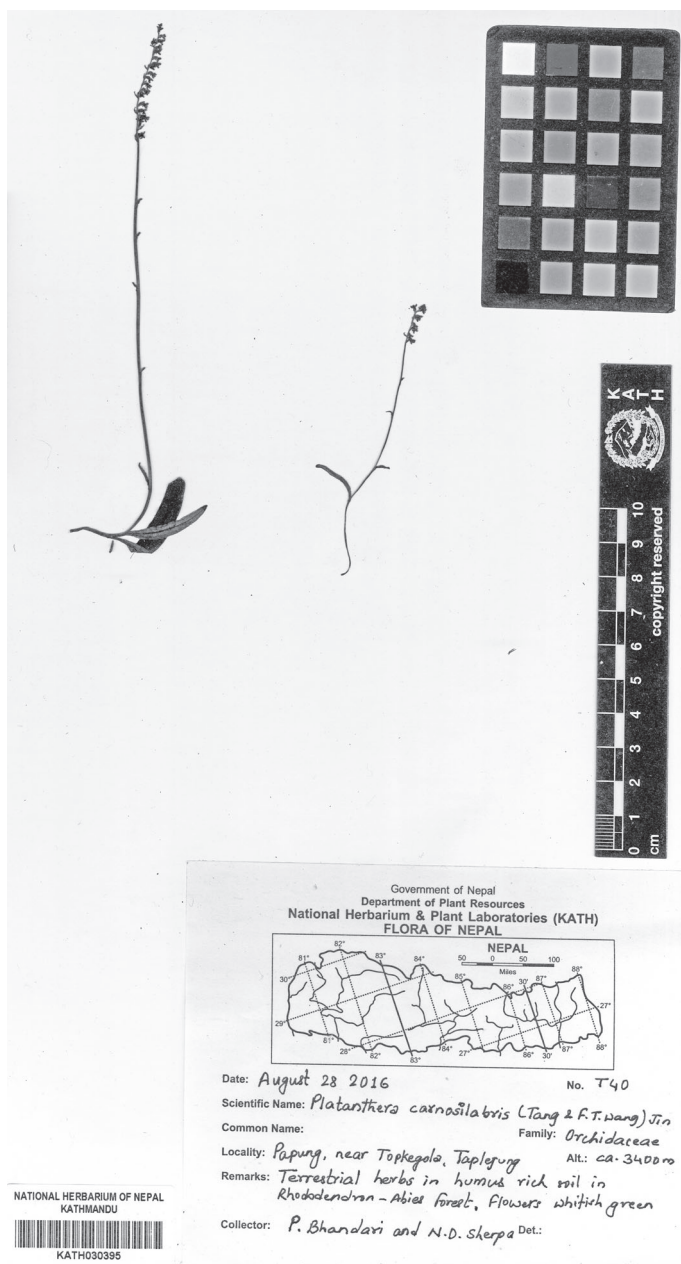


Fig. 1. *Platanthera carnosilabris* (Tang & F. T. Wang) X. H. Jin, Schuit. & W. T. Jin (P. Bhandari & N. D. Sherpa T40, KATH030395).

District, Papung, near Topkegola, ca. 3400 m (P. Bhandari & N. D. Sherpa T40, 28 Aug. 2016, KATH030395).

We are grateful to the National Herbarium and Plant Laboratories, Godawari, Lalitpur, for providing facilities to examine the herbarium

specimens. This study was funded by a grant from The Rufford Foundation. Various support from Kangchenjunga Landscape Conservation and Development Initiative, a joint transboundary collaborative programme of Bhutan, India and Nepal in Kangchenjunga

complex, are also highly appreciated. Dr. Xiaohua Jin from the Herbarium, Institute of Botany, Chinese Academy of Sciences (PE), is thanked for confirming the identity of the species. We thank Mr. Nima Dandu Sherpa for his support in field work.

References

- Banerji M. L. 1982. Orchids of Nepal. Bishen Singh Mahendra Pal Singh, Dehra Dun.
- Chaudhary R. P., Upreti Y., Joshi S. P., Shrestha K. K., Basnet K. B., Basnet G., Shrestha K. R., Bhatta K. P., Acharya K. P. and Chettri N. 2015. Kangchenjunga Landscape Nepal: from conservation and development perspectives. Ministry of Forests and Soil Conservation, Government of Nepal; Research Centre for Applied Science and Technology, Tribhuvan University and International Centre for Integrated Mountain Development, Kathmandu.
- Chen X., Gale S. W. and Cribb P. J. 2009. *Platanthera* Richard. In: Wu Z. Y., Raven P. H. and Hong D. Y. (eds.), *Flora of China* **25**: 101–114. Science Press, Beijing and Missouri Botanical Garden Press, St. Louis.
- Efimov P. G. 2016. A revision of *Platanthera* (*Orchidaceae*; *Orchidoideae*; *Orchideae*) in Asia. *Phytotaxa* **254**: 1–233.
- Hara H., Stearn W. T. and Williams L. H. J. 1978. *Orchidaceae*. In: Hara H., Stearn W. T. and Williams L. H. J. (eds.), *An Enumeration of the Flowering Plants of Nepal. I*: 30–58. British Museum (Natural History), London.
- Jin W. T., Jin X. H., Shuiteman A., Li D. Z., Xiang X. G., Huang W. C., Li J. W. and Huang L. Q. 2014. Molecular systematics of subtribe *Orchidinae* and Asian taxa of *Habenariinae* (*Orchideae*, *Orchidaceae*) based on plastid *matK*, *rbcL* and nuclear ITS. *Mol. Phylog. Evol.* **77**: 41–53.
- Ohba H. and Akiyama S. 1992. The Alpine Flora of the Jaljale Himal, East Nepal. The University Museum, The University of Tokyo, Tokyo.
- Press J. R., Shrestha K. K. and Sutton D. A. 2000. Annotated Checklist of the Flowering Plants of Nepal. The Natural History Museum, London.
- Rajbhandari K. R. 2015. A Handbook of the Orchids of Nepal. Department of Plant Resources, Kathmandu.
- Raskoti B. B. 2015. A new species of *Gastrochilus* and new records for the orchids of Nepal. *Phytotaxa* **233**: 179–184.
- Rokaya M. B., Raskoti B. B., Timsina B. and Münzbergová Z. 2013. An annotated checklist of the orchids of Nepal. *Nord. J. Bot.* **31**: 511–550.
- Shrestha K. K., Bhattarai S. and Bhandari P. 2018. Handbook of Flowering Plants of Nepal. Vol. 1. Scientific Publishers, Jodhpur.

P. Bhandari^a, Y. Upreti^a, L. R. Shakya^b: ネパール新産の *Platanthera carnosilabris* (ラン科)

ラン科のキソチドリ属 *Platanthera* Rich. は小型あるいは中型の地性植物で、アジア、ヨーロッパ、北アメリカ、北アメリカなどに約 200 種が知られている。アジアでは 78 種があり、多くは高所に分布する。ネパールには 18 種があり、中部や東部に分布する。今回、東部ネパールの Taplejung District, Mewa Khola valley において、標高約 3400 m のシャクナゲ・モミ林の林床で

P. carnosilabris (Tang & F. T. Wang) X. H. Jin, Schuit. & W. T. Jin を記録した。本種は中国雲南省に知られていたが、ネパール新産であり、分布域の最西端に当たる。

(^aネパール・Tribhuvan University Research Centre for Applied Science and Technology,

^bネパール・Tribhuvan University Amrit Campus Department of Botany)