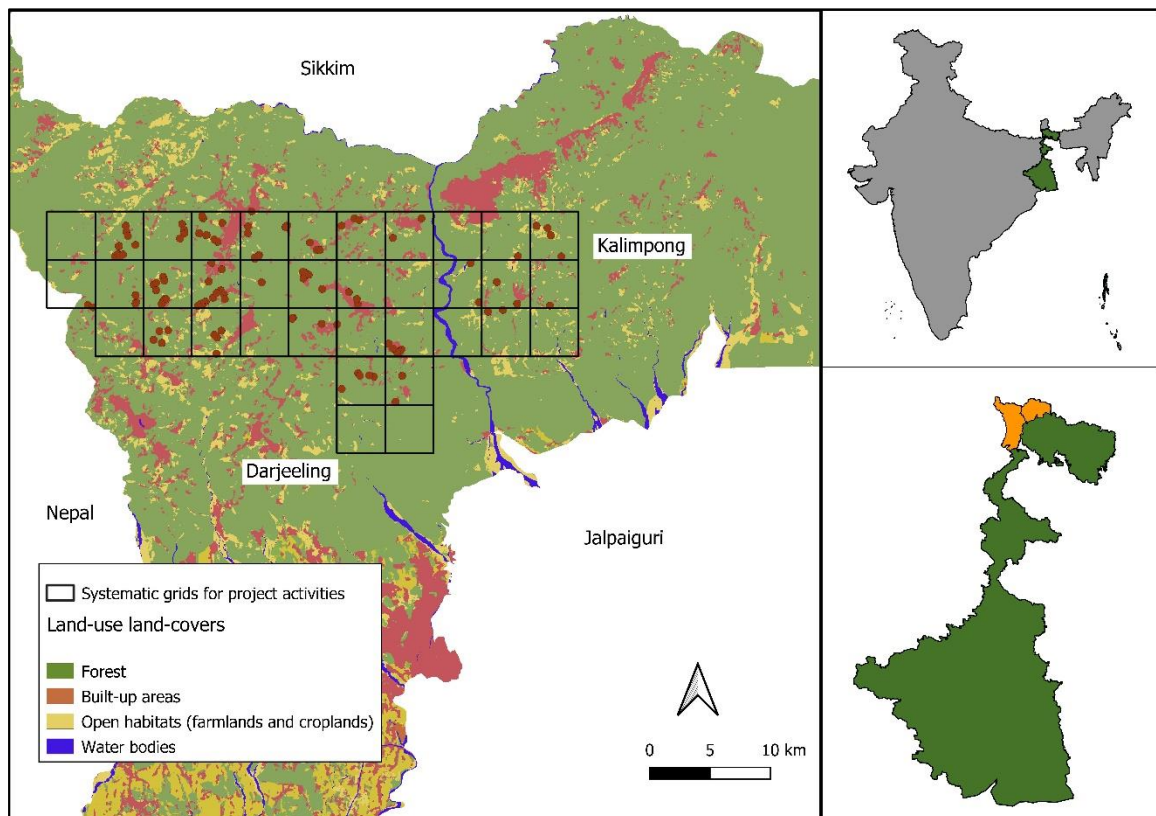


Title of Application: Foster conservation of threatened mammals through community engagement in the hills of Northern West Bengal, India

Name of leader: Shreya Ray

Field work conducted

- We finished conducting 110 semi-structured interviews across 35 grids across the Darjeeling hills in India.
- These interviews revealed people’s interactions with more than 30 species of mammals
- During the interviews we also discussed about our plans conducting camera trapping exercises in the landscape by collaborating with local people and received strong interest from the local community.
- We also met with other organizations working in the landscape to plan collaborative outreach activities with communities and schools.
- We met and discussed our project with the stakeholders in the region: local communities, village heads, tea garden managers and forest department officials.
- Additionally, we have also supported a short summer project of a local student helping her get deeper insights into the intricacies of human mammal interactions in the landscape.
- We had to stop field work after May due to heavy incessant rains. We worked on the data collected during this time to ensure understanding initial trends and pitfalls going forward.



Map: Project area encompassing various land-uses and land holdings such as protected areas, tea gardens and community lands

Preliminary data analysis based on initial data collection

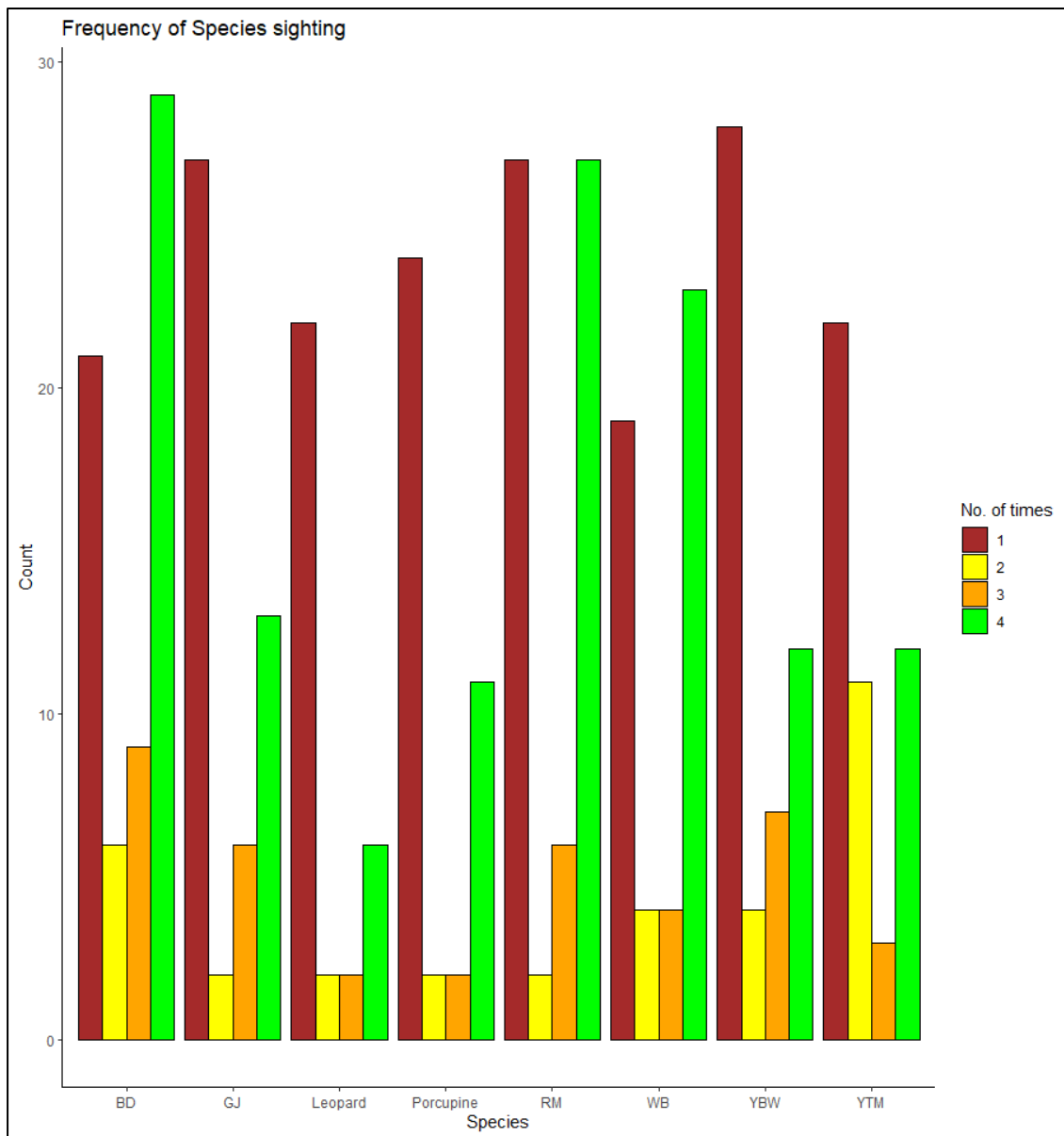


Figure 1: This graph shows the frequency of sightings of the top 8 most recorded species; BD-Barking deer, GJ-Golden jackal, Leopard, Porcupine, RM-Rhesus macaque, WB-Wild pig, YBW-Yellow bellied weasel and YTM-Yellow throated martens. We also noted the number of times they were sighted (1-1-5 times, 2-5-10 times, 3-10-15 times, 4-more than15 times)

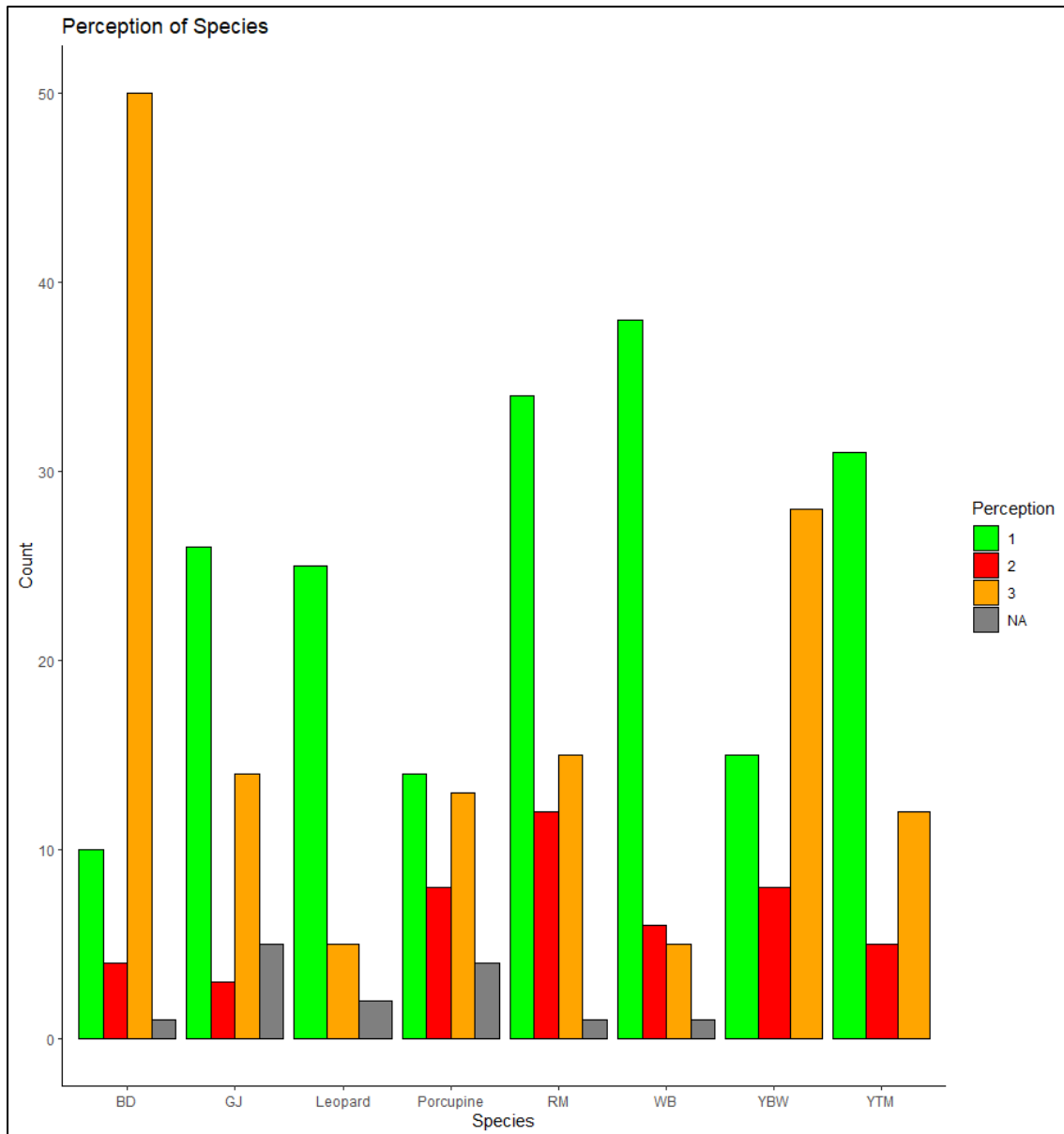


Figure 2: We looked at the perception of most sighted species with a Likert scale (Statement: Species is good and scale values; 1-Disagree, 2-Neither agree or disagree, 3-Agree and NA-No comment)

- We tried to understand species wise trends in higher sightings (Figure 1)
- We also tried to understand perception of different species (Figure 2)
- We have also started reading the descriptive data.
- Our initial analysis has given interesting insights on peoples' perception of various mammals based on their interactions which have been captured through the descriptive questions and we are looking forward to using these insights in the fieldwork planned from September

Plans ahead

- We will start field activities again from September 2024 which includes Interview surveys, camera trapping and outreach activities