

## Freshwater crab characteristics

- Worldwide distribution, restricted to tropics & subtropics
- Only found in freshwater; many are semi-terrestrial
- High global species diversity
- High levels of endemism and niche specialization

## Direct development in freshwater crabs: poor dispersal, easily isolated

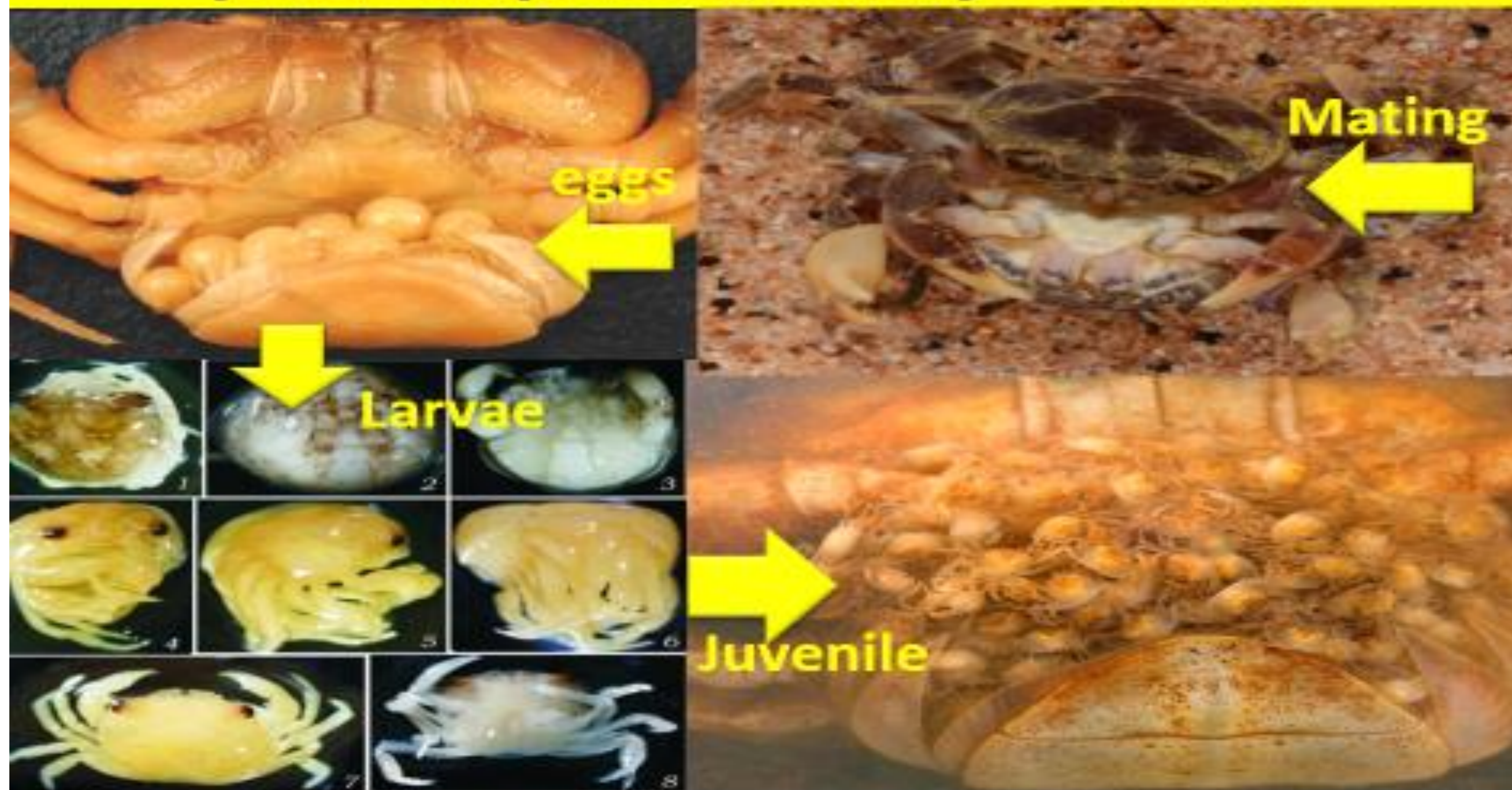


Fig. 1. Reproductive cycle in freshwater crabs

## Molecular evidence for a new genus of freshwater crab from Congo basin zone (Mvogo Ndongo et al. 2017)

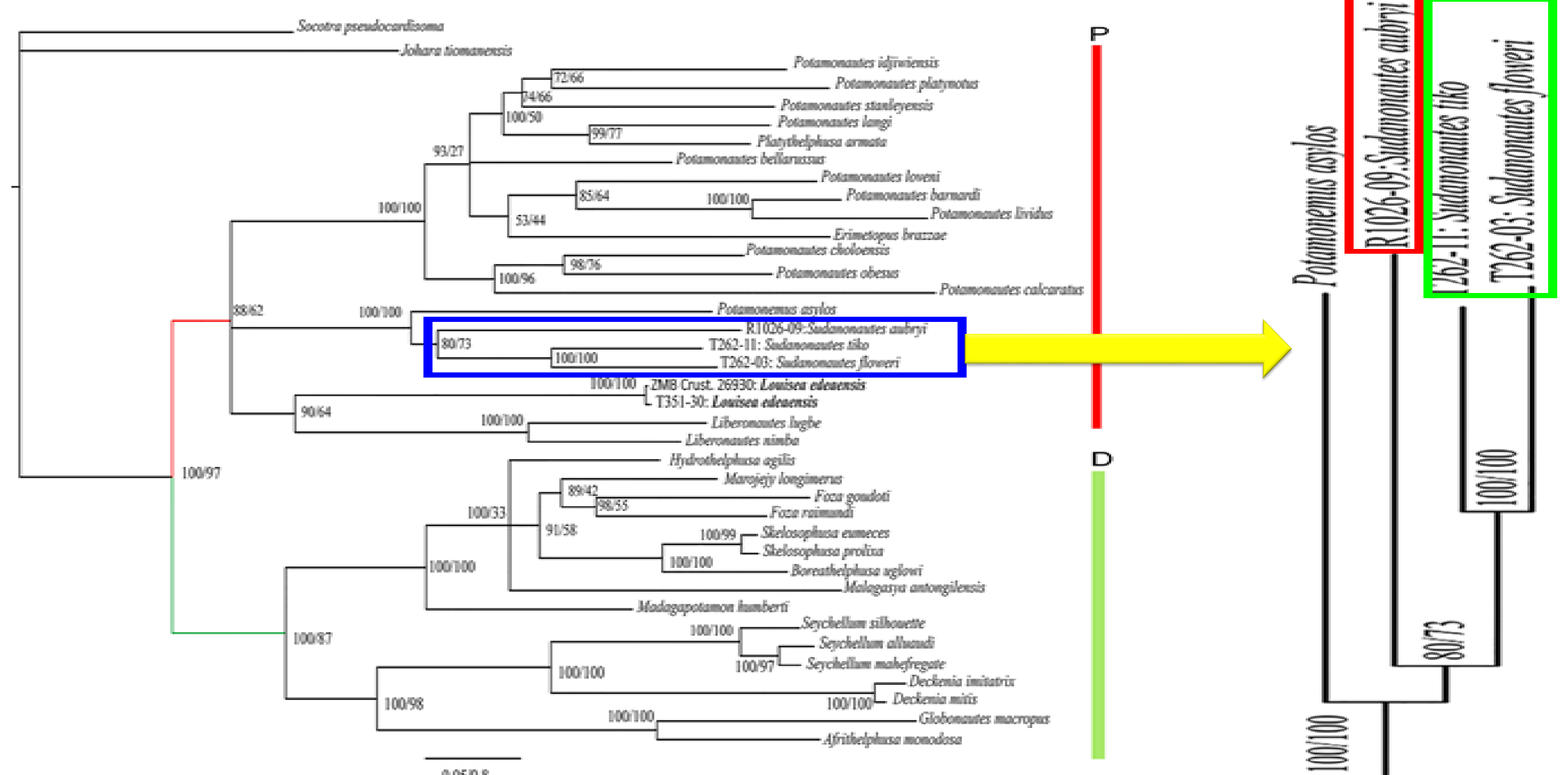


Fig. 4. Molecular evidence for a new genus from the Congo basin

## Sudanonautes lineages from big waters

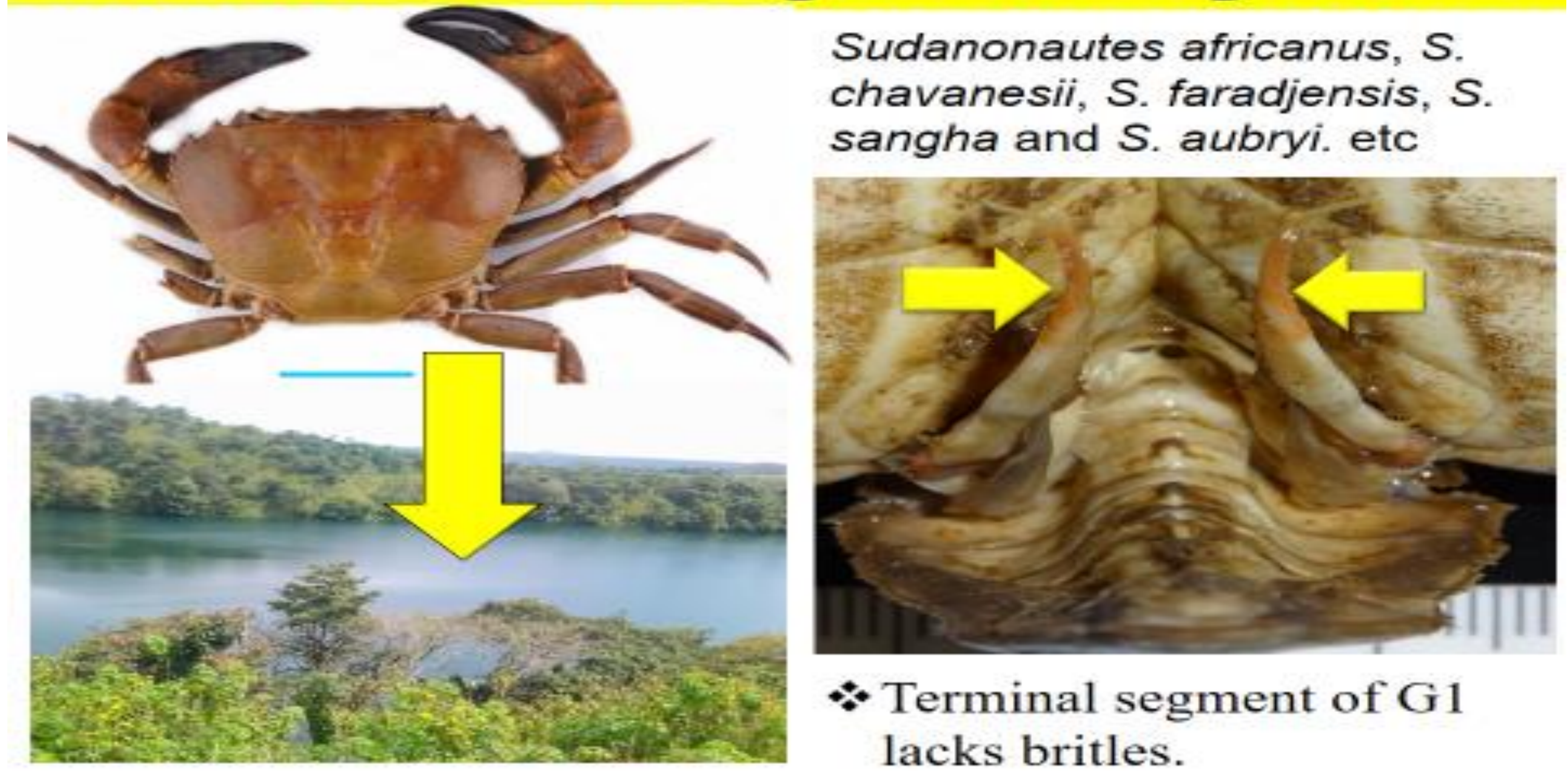


Fig. 5. Some characters for *Sudanonautes*

## Sudanonautes lineages from small waters: new genus

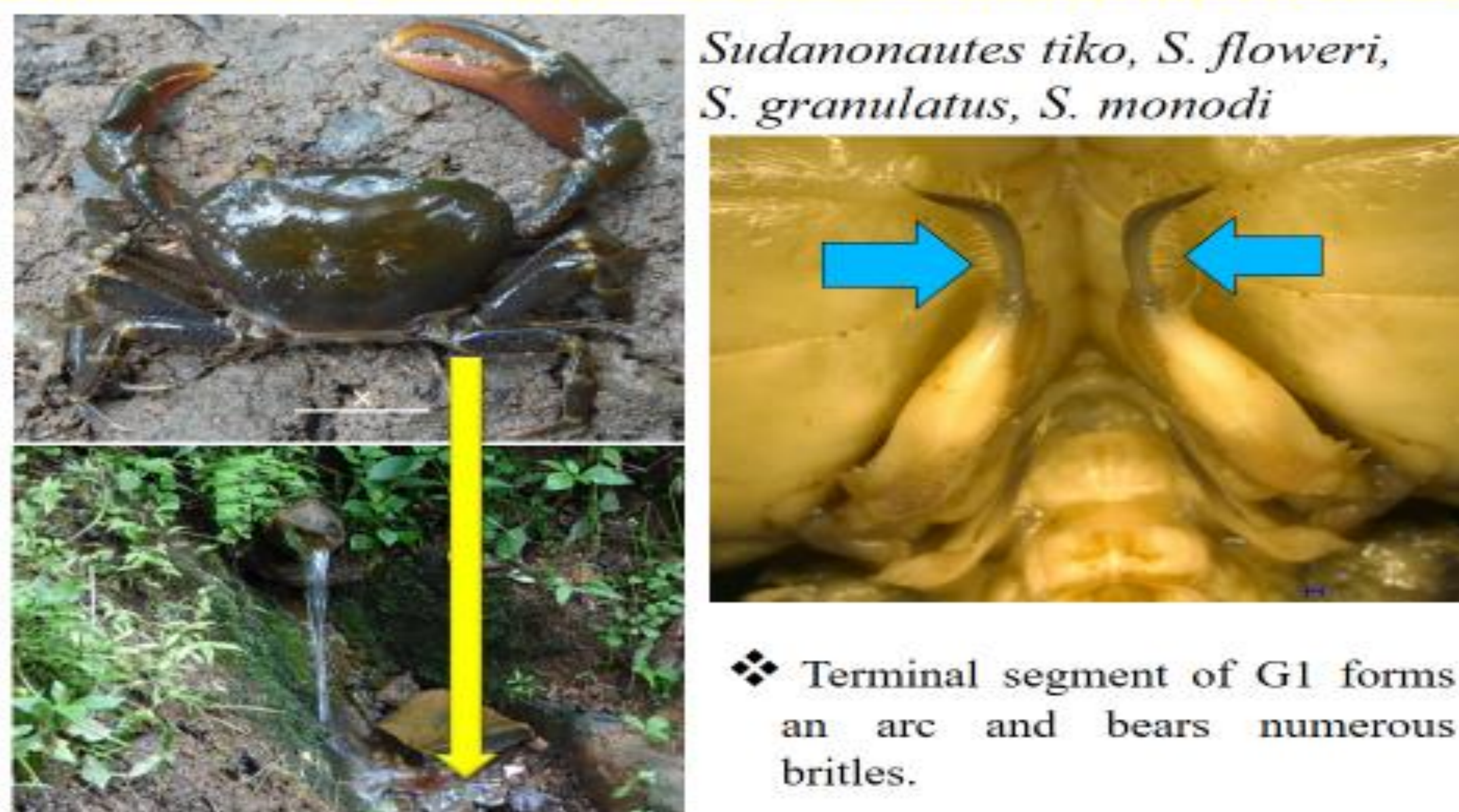


Fig. 6. Some characters of the new genus from the Congo basin

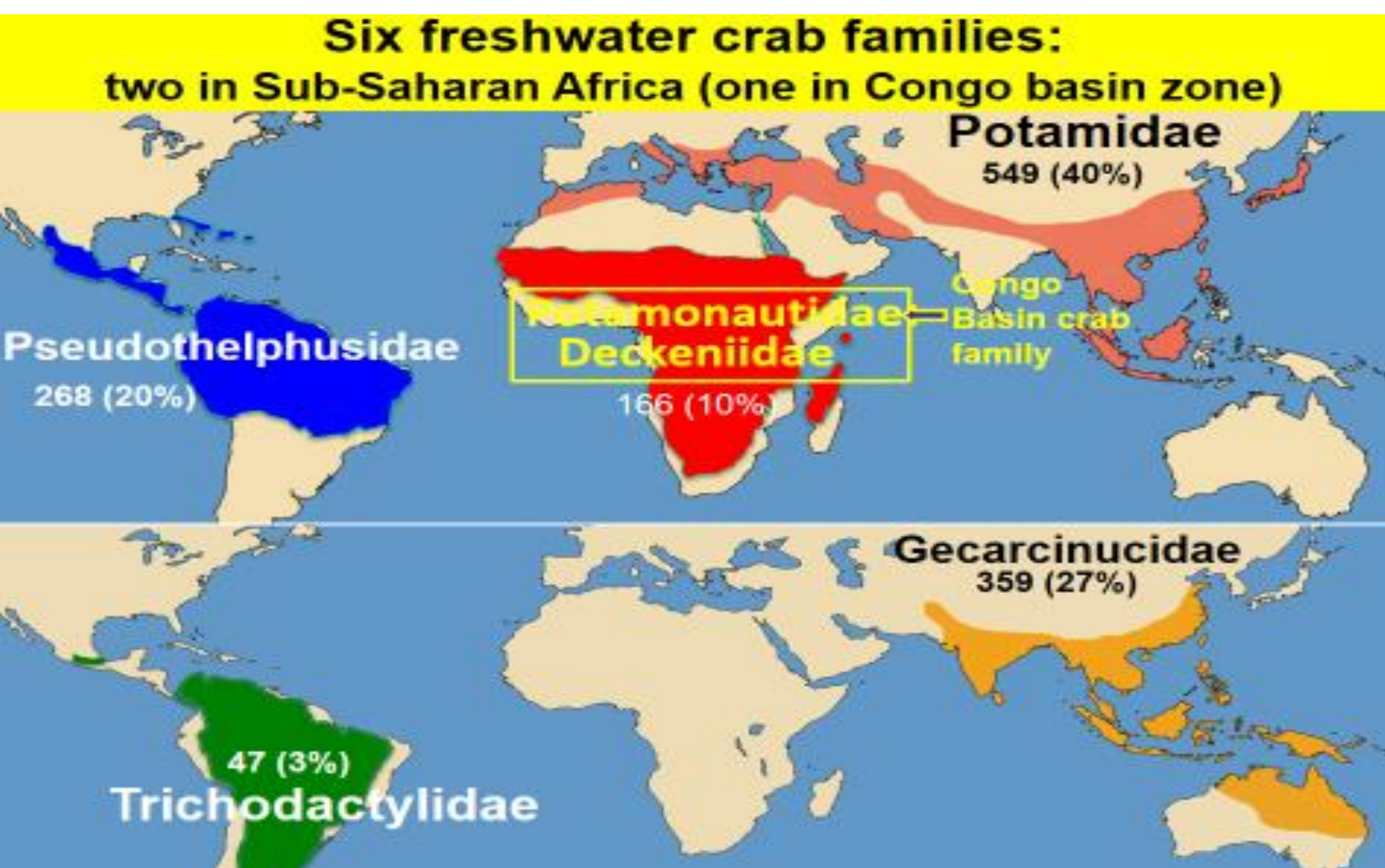


Fig. 2. Potamonautidae, freshwater crab family in Africa including Congo basin

## Freshwater crab genera from Congo basin

(Cumberlidge & Daniels, 2022)

Congo basin= 41% of genera

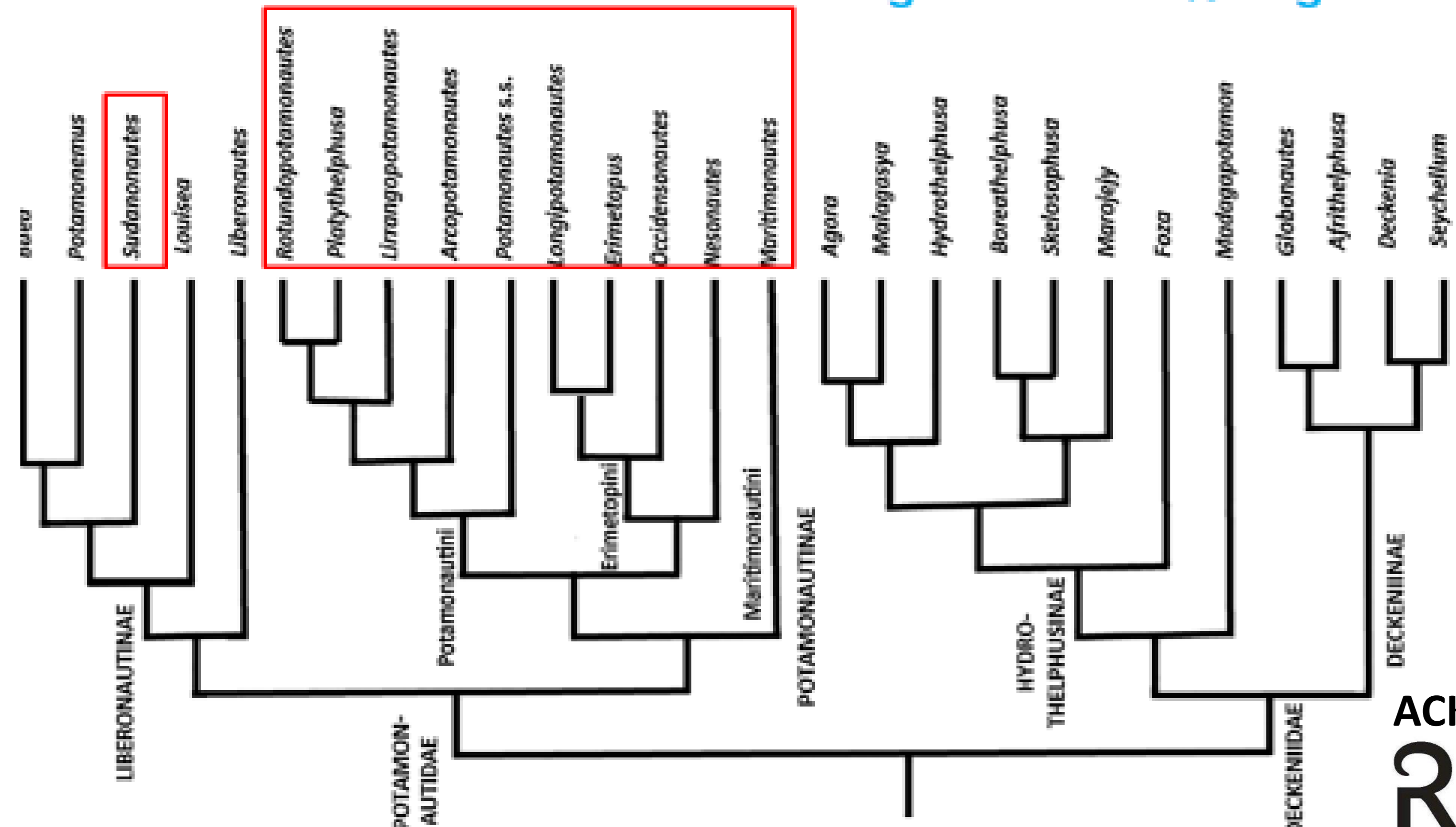


Fig. 3. Freshwater crab genera (red square) from Congo basin

## ACKNOWLEDGEMENTS



Cumberlidge N, Daniels S. (2022) A new multilocus phylogeny reveals overlooked diversity in African freshwater crabs (Brachyura: Potamoidea): a major revision with new higher taxa and genera. *Zoological Journal of the Linnean Society*, 194 (4), 1268–1311. <https://doi.org/10.1093/zoolinnean/zlab082>

Mvogo Ndongo PA, Cumberlidge N, Poettinger TS, von Rintelen T, Tamesse JL, Schubart CD (2017) Molecular evidence for the assignment of the Cameroonian freshwater crab genus *Louisea* Cumberlidge, 1994, to the Afrotropical subfamily Potamonautinae Bott, 1970 (Crustacea: Potamoidea: Potamonautidae). *Zootaxa* 4286(3): 439–444. <https://doi.org/10.11646/zootaxa.4286.3.12>

## REFERENCES