

Project Update: February 2023

Activities:

1. Establish a list of threatened medicinal flora (TMP) of the Guinean zone of Togo.
2. Collect the information on its 'usage and exploitation.
3. Deposit plant samples/specimens in the herbarium of the University of Lomé

The localities to be investigated were chosen on a stratified sampling basis. The ecological zones and the repartition of ethnocultural groups represent the strata selected. So, 62 localities were surveyed from April to September 2022 throughout the study area (Figure 1).

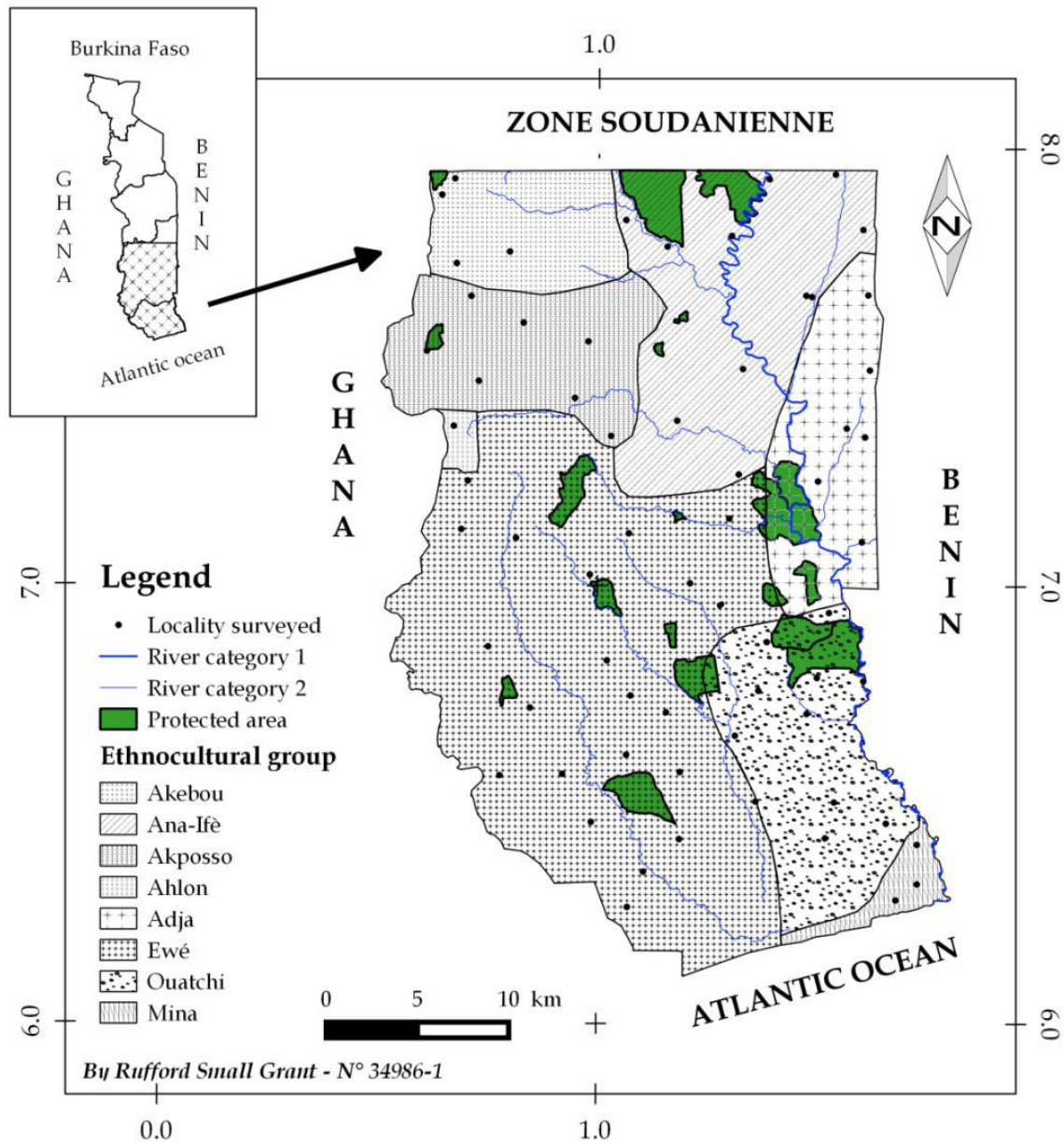


Figure 1: Prospecting points.

Data were collected through semi-structured individual and focus group surveys. The questions of the interview are focused on medicinal plants which were used in the past but no longer exist in the area and those which exist but no longer used, local knowledge related to these endangered medicinal plants, plant organs, preparation and administration method, and diseases processed with plant drugs. This knowledge will be used to produce a book in the local language and be distributed free of charge to the leaders of the ethnocultural groups. The code of ethics was strictly followed. Verbal consent "signifying acceptance of the interview" from community authorities and each interviewee, in accordance with the principles of the ISE Code of Ethics (ISE, 2006), was obtained. Before undertaking the research in each community and with each interviewee, the objectives, implications, and research outputs were explained in detail to the community leaders and notables. A translated questionnaire was given to the leaders. Administrative agreements at the prefectural level were necessary for some localities to create a trusting relationship and to reassure the respondents that they could express themselves freely without constraints or negative consequences.



Figure 2: Survey at Assiamagblé – Maritime region (Team 1 with the principal investigator)



Figure 3: Survey at Gameble – Maritime region (Team 1 with the principal investigator).



Figure 4: Survey about TMP in Tomegbe – Plateau region (Team 2)



Figure 5: Survey about TMP in Seregbene – Plateau region (Team 2).

Results:

We surveyed 352 interviewees throughout the study area. A total of 123 species (Table 1) belonging to 118 genera and 47 families were collected from the survey as TMP.

Table 1: TMP collected from survey.

N°	Scientific name and author name	Local name/Ethnic	Family
1	<i>Acacia nilotica</i> (Guill. & Perr.) Kuntze	Kadaag/Mb	Fabaceae
2	<i>Acanthospermum hispidum</i> DC.	Lan gbanisoè/Ka	Compositae
3	<i>Adansonia digitata</i> L.	Adzidotsi/Ew	Bombacaceae
4	<i>Afraegle paniculata</i> (Schumach. & Thonn.) Engl.	Ngoné/Ka	Rutaceae
5	<i>Aframomum melegueta roscoe</i> K. Schum	Colombo/Ka	Zingiberaceae
6	<i>Azelia africana</i> Pers.	Wéré/Ka	Fabaceae
7	<i>Albizia adianthifolia</i> (Schumach.) W. Wight	Ziwa/Adj	Fabaceae
8	<i>Alchornea cordifolia</i> (Schumach. & Thonn.) Müll.Arg.	Zowou/Ka	Euphorbiaceae
9	<i>Alchornea floribunda</i> Müll.Arg.	Ayaba/Ew	Euphorbiaceae
10	<i>Allophylus africanus</i> P. Beauv.	Assivaton/Mi	Sapindaceae
11	<i>Aloe buettneri</i> A. Berger	Aloes/Ew	Liliaceae
12	<i>Alstonia boonei</i> De Wild.	Nyamidua/Ew	Apocynaceae
13	<i>Annona muricata</i> L.	Agnigli/Ew	Annonaceae
14	<i>Anogeissus leiocarpa</i> (DC.) Guill. & Perr.	Tchininga/Te	Combretaceae
15	<i>Anthocleista djalensis</i> A. Chev.	Gboloba/Ew	Loganiaceae
16	<i>Anthocleista nobilis</i> G. Don	Gboloba/Ew	Loganiaceae
17	<i>Anthocleista vogelii</i> Planch.	Gboloba/Ew	Loganiaceae
18	<i>Aristolochia albida</i> Duch.	Gadagali/Ew	Aristolochiaceae
19	<i>Bidens pilosa</i> L.	Dzanyipipi/Ew	Compositae
20	<i>Blighia sapida</i> K.D. Koenig	Kpizou/Ka	Sapindaceae
21	<i>Boerhavia diffusa</i> L.	Avhaxasa/Ew	Nyctaginaceae
22	<i>Borassus aethiopum</i> Mart.	Agoti/Ew	Arecaceae
23	<i>Bridelia ferruginea</i> Benth.	Akamati/Ew	Euphorbiaceae
24	<i>Burkea africana</i> Hook.	Tchingli/Ka	Fabaceae

25	<i>Caesalpinia bonduc</i> (L.) Roxb.	Adikou/Ew	Fabaceae
26	<i>Cardiospermum halicacabum</i> L.	Gbatogbato/Ew	Sapindaceae
27	<i>Carissa edulis</i> (Forssk.) Vahl	Boetso/Ew	Apocynaceae
28	<i>Cassia alata</i> L.	Madonsohomè/Ew	Fabaceae
29	<i>Catharanthus roseus</i> (L.) G. Don	Flawavigbé/Ew	Apocynaceae
30	<i>Ceiba pentandra</i> (L.) Gaertn.	Komoulé/Ag	Bombacaceae
31	<i>Chenopodium ambrosioides</i> L.	Emigbe/Ew	Chenopodiaceae
32	<i>Chrysobalanus icaco</i> L.		Chrysobalanaceae
33	<i>Cissus populnea</i> Guill. & Perr.	Mènè/Ka	Vitaceae
34	<i>Clausena anisata</i> (Willd.) Hook.f. ex Benth.	Idenugbata/Akp	Rutaceae
35	<i>Cleome viscosa</i> L.	Pepelugbe/Ew	Capparaceae
36	<i>Cnestis ferruginea</i> DC.	Tsoade/Ew	Connaraceae
37	<i>Cola gigantea</i>		Sterculiaceae
38	<i>Cola nitida</i> (Vent.) Schott & Endl.	Coroo/Te	Sterculiaceae
39	<i>Combretum micranthum</i> G. Don	Bessikaku/Ew	Combretaceae
40	<i>Conyza aegyptiaca</i> (L.) Dryand ex. Aiton		Poaceae
41	<i>Costus spectabilis</i> (Fenzl) K. Schum.	Tetegugu/Ew	Zingiberaceae
42	<i>Crateva adansonii</i> DC.	Watayizan/Ew	Capparaceae
43	<i>Curcuma longa</i> L.	Wissikoyè/Ka	Zingiberaceae
44	<i>Dichrostachys cinerea</i> (L.) Wight & Arn.	Sozossi/Te	Fabaceae
45	<i>Diospyros mespilliformis</i> Hochst. ex A.DC.	Tigbado/Te	Ebenaceae
46	<i>Entandrophragma angolense</i> (Welw.) C.DC.		Meliaceae
47	<i>Erythrina senegalensis</i> DC.	Gbengben tchikoloka/Te	Fabaceae
48	<i>Euphorbia hirta</i> L.	Notsigbe/Ew	Euphorbiaceae
49	<i>Euphorbia poissonii</i> Pax	Adikpui/Ew	Euphorbiaceae
50	<i>Flacourtia flavescens</i> Willd.	Dêgogo/Ew	Flacourtiaceae
51	<i>Garcinia afzelii</i> Engl.		Guttiferae
52	<i>Garcinia kola</i> Heckel	Ahowe/Ew	Guttiferae
53	<i>Gliricidia sepium</i> (Jacq.) Walp.		Fabaceae
54	<i>Harrisonia abyssinica</i> Oliv.	Xedza/Ew	Simaroubaceae
55	<i>Heliotropium indicum</i> L.	Koklotadoe/Ew	Boraginaceae

56	<i>Holarrhena floribunda</i> (G. Don) T. Durand & Schinz	Sesewu/Ew	Apocynaceae
57	<i>Imperata cylindrica</i> (L.) Raeusch.	Bedje/Ew	Poaceae
58	<i>Jatropha curcas</i> L.	Babatihé/Ew	Euphorbiaceae
59	<i>Jatropha gossypifolia</i> L.	Babatidjin/Ew	Euphorbiaceae
60	<i>Jatropha multifida</i> L.	Têtwima/Ew	Euphorbiaceae
61	<i>Kalanchoe crenata</i> (Andrews) Haw.	Aflatogan/Ew	Crassulaceae
62	<i>Khaya anthotheca</i> (Welw.) C.DC.	Mahogen/Ew	Meliaceae
63	<i>Khaya grandifoliola</i> C. DC.	Mahogen/Ew	Meliaceae
64	<i>Khaya senegalensis</i> (Desv.) A. Juss.	Mahogen/Ew	Meliaceae
65	<i>Kigelia africana</i> (Lam.) Benth.	Gnàkpéképé/Ew	Bignoniaceae
66	<i>Lannea acida</i> A. Rich.	Kèlo/Te	Anacardiaceae
67	<i>Lannea barteri</i> (Oliv.) Engl.	Kisan/Ka	Anacardiaceae
68	<i>Lannea kerstingii</i> Engl. & K. Krause		Anacardiaceae
69	<i>Launaea taraxacifolia</i> (Willd.) Amin ex C. Jeffrey	Anonto/Ew	Compositae
70	<i>Leptadenia hastata</i> (Pers.) Decne.	Sopotoriyi/Peu	Asclepiadaceae
71	<i>Lippia multiflora</i> Moldenke	Avudatsi/Ew	Verbenaceae
72	<i>Lonchocarpus sericeus</i> (Poir.) Kunth ex DC.	Lonba/Ad	Fabaceae
73	<i>Mallotus oppositifolius</i> (Geiseler) Müll.Arg.	Nyativi/Ew	Euphorbiaceae
74	<i>Markhamia lutea</i> (Benth.) K. Schum.		Bignoniaceae
75	<i>Mezoneuron benthamianum</i> Baill.	Gbigbova/Ew	Fabaceae
76	<i>Milicia excelsa</i> (Welw.) C.C. Berg	Odoum/Akp	Moraceae
77	<i>Monodora myristica</i> (Gaertn.) Dunal	Asioti/Mi	Annonaceae
78	<i>Morinda lucida</i> Benth.	Dadaklalan/Ew	Rubiaceae
79	<i>Nauclea latifolia</i> Sm.	Nyimon/Ew	Rubiaceae
80	<i>Newbouldia laevis</i> (P. Beauv.) Seem.	Kpatima/Ew	Bignoniaceae
81	<i>Ocimum americanum</i> L.	Defetsui/Ew	Labiatae
82	<i>Ocimum basilicum</i> L.	Esrou/Ew	Labiatae
83	<i>Ocimum canum</i> (D. C.)	Aswoeloo/Ka	Labiatae
84	<i>Ocimum gratissimum</i> L.	Hetchagni/Ag	Labiatae
85	<i>Opilia amentacea</i> Roxb.	Kalibinou/Ka	Opiliaceae
86	<i>Parinari excelsa</i> Sabine	Kura/Peu	Chrysobalanaceae

87	<i>Parkia biglobosa</i> (Jacq.) G. Don	Wotsi/Ew	Fabaceae
88	<i>Passiflora foetida</i> L.	Gbanto gbantwe/Adj	Passifloraceae
89	<i>Pergularia daemia</i> (Forssk.) Chiov.	Halbodo/Ka	Asclepiadaceae
90	<i>Phyllanthus amarus</i> Schumach. & Thonn.	Hlinvi/Ew	Euphorbiaceae
91	<i>Piliostigma thonningii</i> (Schumach.) Milne-Redh.	Boboou/Ka	Fabaceae
92	<i>Piper guineense</i> Schum. & Thonn.	Kouleboe/Aké	Piperaceae
93	<i>Piper nigrum</i> L.	Akposso/Adj	Piperaceae
94	<i>Portulaca oleracea</i> L.	Ebouatcho/Akp	Portulacaceae
95	<i>Prosopis africana</i> (Guill. & Perr.) Taub.	Balo/Ka	Fabaceae
96	<i>Psidium guajava</i> L.	Alelo/La	Myrtaceae
97	<i>Pteleopsis suberosa</i> Engl. & Diels	Kizisina/Ka	Combretaceae
98	<i>Pterocarpus erinaceus</i> Poir.	Ntem/Ka	Fabaceae
99	<i>Pterocarpus santalinoides</i> L'Hér. ex-DC.	Kpesna/Mb	Fabaceae
100	<i>Pupalia lappacea</i> (L.) Juss.	Tetemalima/Ew	Amaranthaceae
101	<i>Raphia vinifera</i> P. Beauv.	Alati/Ew	Arecaceae
102	<i>Rauvolfia vomitoria</i> Afzel.	Dodema-kpowoè/Ew	Apocynaceae
103	<i>Securidaca longipedunculata</i> Fresen.	Tritou/Ew	Polygalaceae
104	<i>Securinega virosa</i> (Roxb. ex Willd.) Baill.	Hesre/Ew	Euphorbiaceae
105	<i>Sida acuta</i> Burm.fil.	Afidémè/Adj	Malvaceae
106	<i>Spathodea campanulata</i> P. Beauv.	Adatsigolo/Ew	Bignoniaceae
107	<i>Spondias mombin</i> L.	Akikonti/Ew	Anacardiaceae
108	<i>Strophanthus hispidus</i> A.DC.	Pitombayi/Ew	Apocynaceae
109	<i>Tapinanthus bangwensis</i> (Engl. & Krause) Danser	Gui/Ew	Loranthaceae
110	<i>Terminalia superba</i> Engl. & Diels	Donko/Ew	Combretaceae
111	<i>Tetrapleura tetraptera</i> (Schum. & Thonn.) Taub.	Ledza/Ew	Fabaceae
112	<i>Thevetia peruviana</i> (Pers.) K. Schum.	Thevetia/Ew	Apocynaceae
113	<i>Triplochiton scleroxylon</i> K. Schum.	Atiyhe/Ew	Sterculiaceae
114	<i>Uvaria chamae</i> P.Beauv.	Agbana/Ew	Annonaceae
115	<i>Vernonia amygdalina</i> Del.	Aloma/Ew	Compositae
116	<i>Vernonia cinerea</i> (L.) Less.	Hunsikonou/Adj	Compositae
117	<i>Vitellaria paradoxa</i> subsp. <i>paradoxa</i>	Yokuti/Ew	Sapotaceae

118	<i>Vitex doniana</i> Sweet	Otitikpe/Aké	Verbenaceae
119	<i>Ximenia americana</i> L.	Roumouloung/Na	Olacaceae
120	<i>Xylopia aethiopica</i> (Dunal) A.Rich.	Etso/Ew	Annonaceae
121	<i>Zanthoxylum leprieurii</i> Guill. & Perr.	Xéti/Ew	Rutaceae
122	<i>Zanthoxylum macrophylla</i> (L.) Sarg.	Xéti/Ew	Rutaceae
123	<i>Zanthoxylum zanthoxyloides</i> (Lam.) Zepern. & Timler	Xéti/Ew	Rutaceae

Ad: Adja ; **Ag :** Agnanga ; **Aké :** Akébou ; **Akp :** Akposso ; **Ew :** Ewé ; **Ka :** Kabyè ; **La :** Lamba ; **Mb :** Moba ; **Mi :** Mina ; **Na :** Nawdba ; **Peu :** Peulh et **Te :** Tem