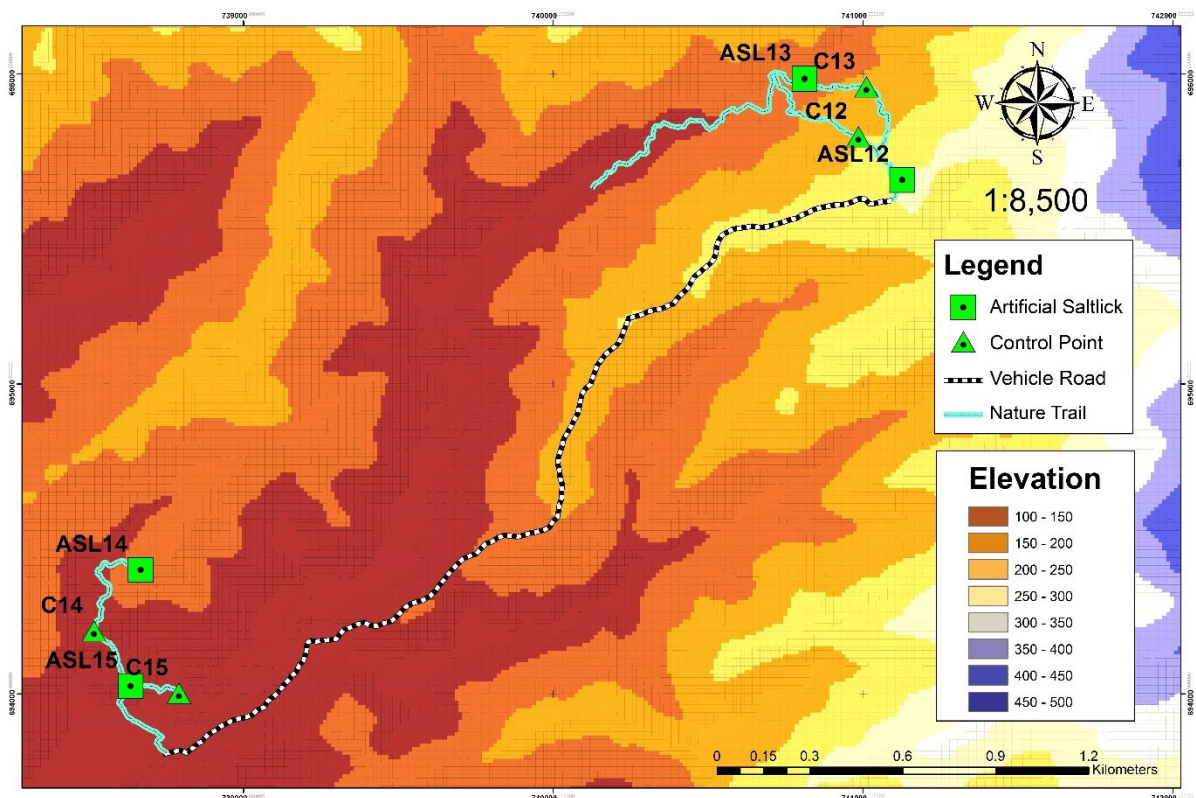


## Project Update: June 2023

The camera trapping survey conducted at the Universiti Malaysia Sabah was completed on 20 April 2023. Therefore, the camera trapping survey was commenced at the third study site of this study, which was the Tenghilan Community Forest, starting from 21 April to 13 June 2023. This survey was conducted at eight different sampling points that were established along the nature trails at this region (**See Picture 1**). To date, a total of 10 different small to medium-sized mammal species were detected and recorded in this study. The recorded species included the long-tailed macaque (*Macaca fascicularis*), Sunda pangolin (*Manis javanica*), long-tailed porcupine (*Trichys fasciulate*), mousedeer (*Tragulid spp.*), slender treeshrew (*Tupaia gracilis*), collared mongoose (*Herpestes semitorquatus*), plantain squirrel (*Callosciurus notatus*), leopard cat (*Prionailurus bengalensis*), large treeshrew (*Tupaia tana*), and Prevost's pquirrel (*Callosciurus prevostii*). The pictures of new mammal species that are captured by the deployed camera traps in this research are attached in this quarter report, alongside with their respective scientific names, common names (English and Malay versions), and IUCN Red List Status.



**Picture 1.** This map shows the 8 sampling points (4 control points & 4 artificial saltlicks) that are established systematically along the accessible nature trails presented at the Tenghilan Community Forest. This locality map is created by me using ArcMap ver. 10.4, and then the base map is actually a digital elevation model that is downloaded from <https://asf.alaska.edu/>.





Collared Mongoose/Garangan Ekor Panjang (NT) (*Herpestes semitorquatus*).



Slender Treeshrew/Tupaia Muncung Besar (LC) (*Tupaia gracilis*).





Prevo's Squirrel/Tupai Gading (LC) (*Callosciurus prevostii*).



( 24°C 2023/05/20 08:28:11



Large Treeshrew/Tupai Tanah (LC)(*Tupaia tana*).





21°C 04/06/2023 06:18:43



Plantain Squirrel/Tupai Pinang (LC) (*Callosciurus notatus*).