

## Project Update: June 2019

One more rainy season!! And this season seems to be atypical, most of my days in the field was raining, so probably we will see some different patterns of the bats to this rainy season. I have made repeated ultrasound recordings and insect capture twice in all environments (secondary forest, fragment forest and continuous forest) of the PDBFF again in this season, and this was my last field trip of the project. The playback experiment with the owl vocalization worked well until April, in May it was necessary to buy more two extra batteries for the JBL speakers works all night (Figure 1).



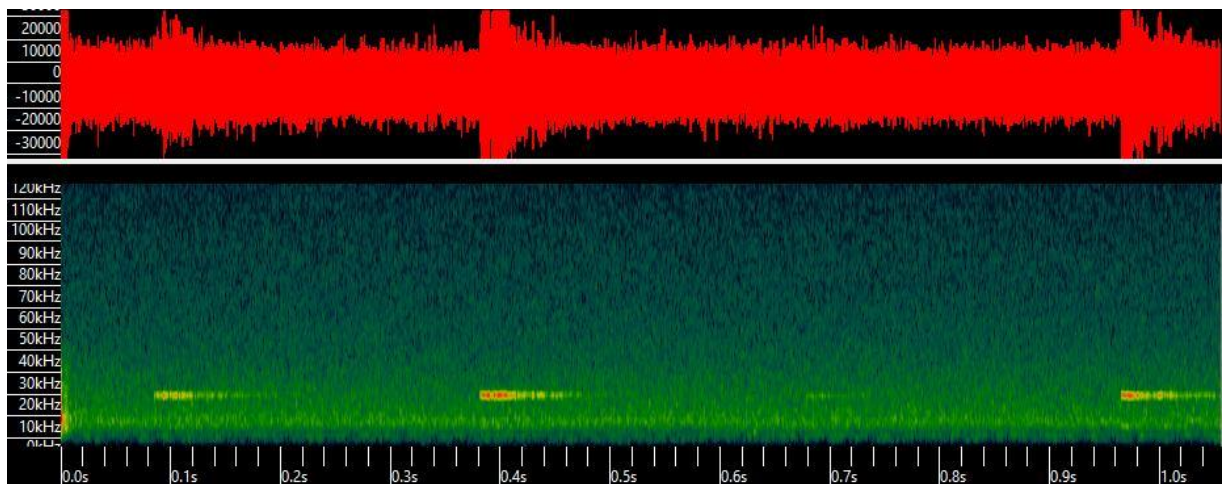
**Figure 1.** This is me putting the playback experiment in the fragment forest of Colosso camp – PDBFF. Note that I placed a leave on the JBL speaker for protection against rain, in this rainy season I also protected more the devices in account of excessive humidity. (Presidente Figueiredo – AM – Brazil). Giulliana Appel

In March of 2019, I saw more tent bats in the continuous forest. It was fantastic to see these beautiful frugivorous bats in the palm leaves, and it was a nice opportunity to take good pictures (Fig. 2).



**Figure 2.** Two *Mesophylla* bats in a tent of palm leaf at continuous forest of Cabo Frio camp – PDBFF (Presidente Figueiredo – AM – Brazil). Giulliana Appel

The insect identification collected in the dry season of 2019 was finished and done by the master student Karina Kethlen. We registered 17 orders of Insecta and three orders of Arachnida (Aracnidea, Opiliones, Pseudoescorpiones) in the Malaise traps. In my project I will only consider the orders of insects which are reported by the literature as food for aerial insectivorous bats. Now, the next step will be begin the identification of the insects collected in this rainy season of 2019. I keep processing the ultrasound recordings with the rains of the rainy season the number of recordings tripled and will be necessary a long time to end the bat identification. In recent identifications, I saw *Peropteryx kappleri* in a secondary forest, I believe that this species is associated to open areas because I saw more registers in secondary forest compared to other, but the statistical analysis will confirm (Fig. 3).



**Figure 3.** Search-phase calls of *Peropteryx kappleri* in a secondary forest of Florestal camp – PDBFF (Presidente Figueiredo – AM – Brazil). Giulliana Appel