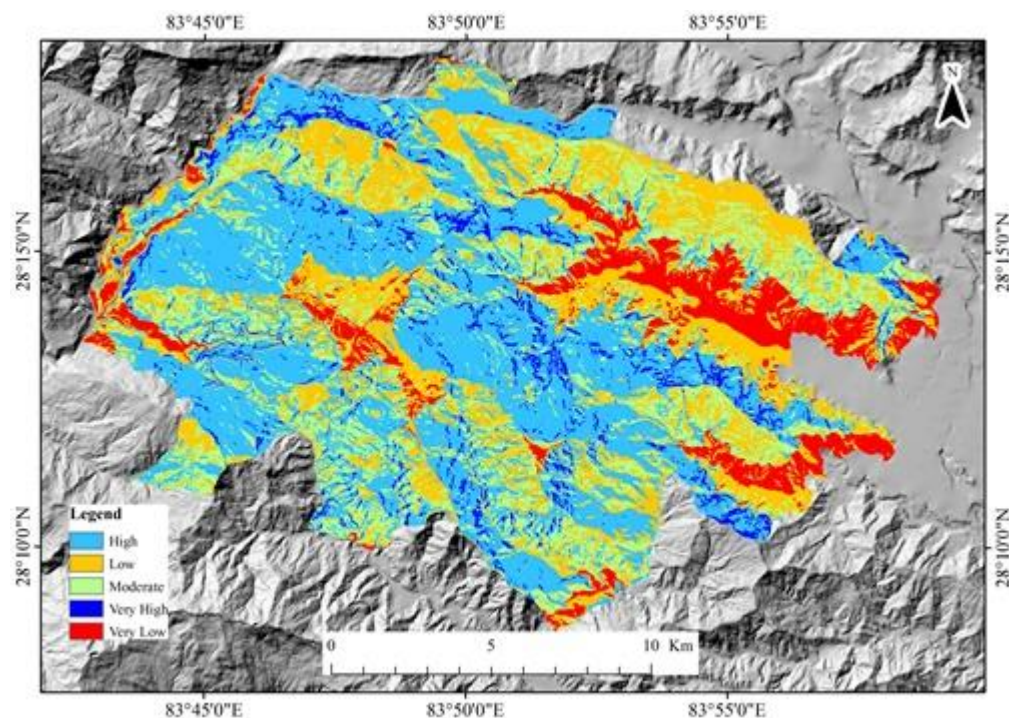


## Project Update: January 2017

Preliminary work which involves desk study of topographic maps and related secondary literature has been done along with the identification of key stakeholders required in the project - the representatives of the Panchase Protected Forest Main Council, districts councils, Community Forest User Groups, local NGOs, women's groups, youth clubs and schools.

Literature on tree ferns globally and nationally was found to be very piecemeal compared to other protected flora, with most comprehensive literatures on the reproductive biology of tree ferns.

An ASE availability map, based on aspect (A), slope (S) and elevation (E) as habitat environment variables of tree ferns obtained through secondary and reconnaissance field was derived using statistical index method. Shades of blue colour depicts high availability of the tree fern whereas low availability by red colour. Higher availability is observed in north to east facing slopes of 40° to 60° and elevation ranging from 1000 m to 1500 m. The output result will alter with consideration of other environmental variables – distance from streams, precipitation zones and geology/soil types.



Preliminary aspect, slope and elevation (ASE) availability map of *Cyathea* species (tree fern) in Panchase Mountain Ecosystem, Nepal.