

## **Project Update: February 2017**

### **1) Exploring the relationship between SHPs and human-animal conflict:**

- a. We have collected data from the Karnataka State Forest Department on the human-elephant conflict compensation claims filed by local communities from the Cauvery and Kollegal Divisions. However, we are still awaiting data from a few forest ranges, as the forest department office, along with all paper records, has recently been shifted. We have expanded that spatial extent of our study, and are also seeking information from the Madikeri Forest Division. The RTI application has been filed, and data is being awaited. We have collected data on all the SHPs falling within the study area as well.
- b. We identified villages for our field surveys, and collected all relevant demographic information. Our field surveys were delayed due to riots and unrest at the field site resulting from the Cauvery water dispute. Recce surveys and informal discussions were conducted with local community members near Chunchi, Limbavalli and Shimsha small hydropower projects.

### **2) Landscape-level modelling of SHP impacts:**

- a. Data on all commissioned, allotted, deferred, pending and new application SHPs within the State of Karnataka was obtained from the Karnataka Renewable Energy Development Ltd. These have been mapped.
- b. Information on SHP location, date of commissioning, capacity, project type, project proponent, CDM status and distribution system for all the projects have been collected and compiled. Additionally, we have collected data on the spread of ancillary infrastructure (approach roads, penstocks and transmission lines) for most of the commissioned projects. Digital Elevation Models have been used to delineate a river network layer and river basin units for the State of Karnataka. Current and proposed SHP densities have been estimated for each basin-unit.

### **3) Outreach to stakeholders:**

- a. Two field visits were made to collect additional footage for the documentary film. Additionally, interviews with stakeholders and experts were also conducted.
- b. The film script has been prepared, and it is now in the editing stages.

## **Next steps**

### **1) Exploring the relationship between SHPs and human-animal conflict:**

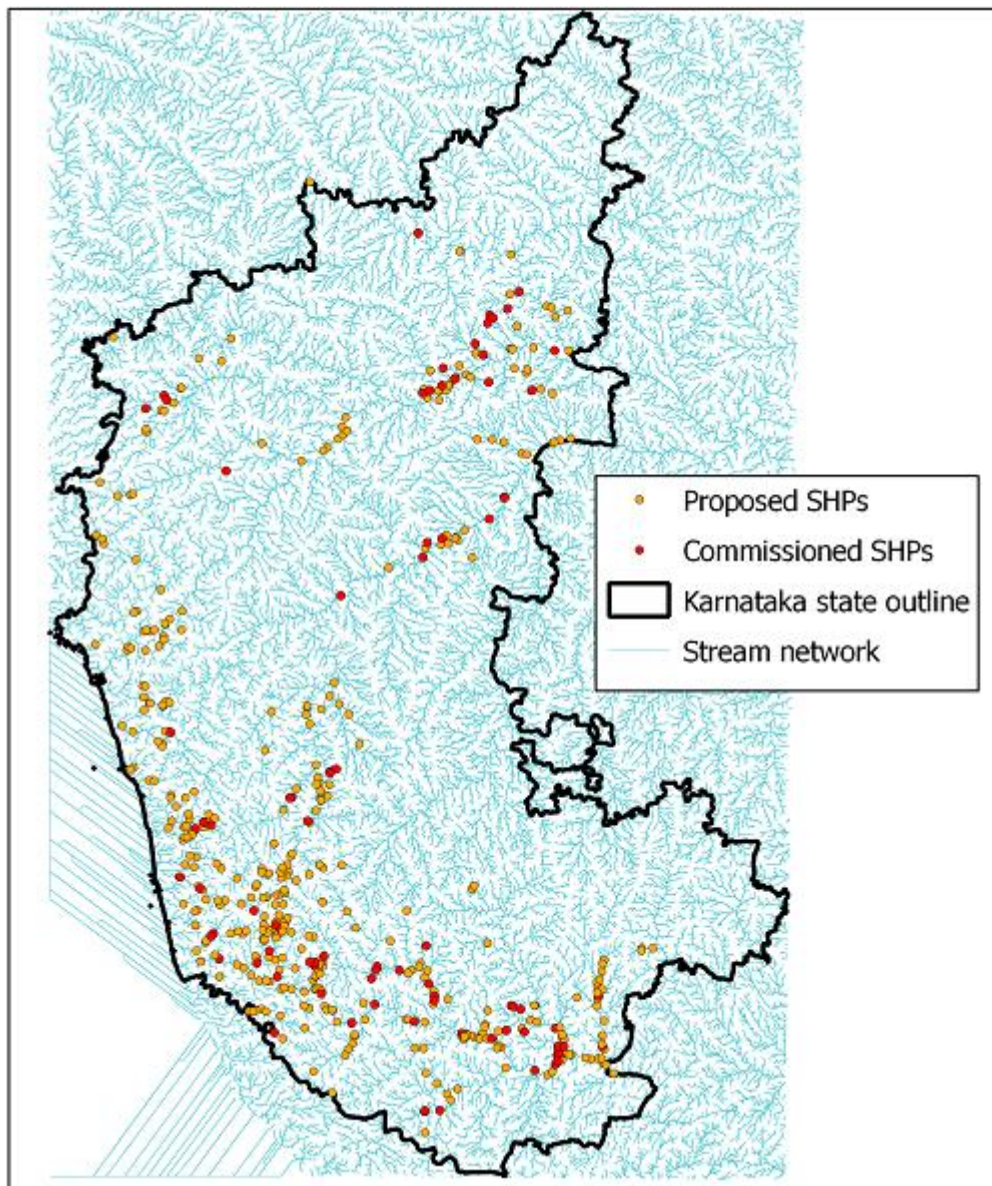
- a. The remaining data on human-elephant conflict compensation claims will be obtained from the Karnataka State Forest Department, and this will be examined for trends.

2) Landscape-level modelling of SHP impacts:

- a. We are currently preparing a data layer of forest cover and biodiversity values to overlay on the existing geospatial information. A scoring system will then be developed to categorise the conservation importance of each basin unit with respect to proposed SHP development.

3) Outreach to stakeholders:

- a. The documentary film will be ready soon. Hindi and Kannada versions of the same will be made as well.
- b. Film screenings will be conducted for a variety of stakeholders.



Karnataka SHP location





SHP related ancillary structures crisscrossing across a forest



Dewatered stretch of river below a SHP weir