

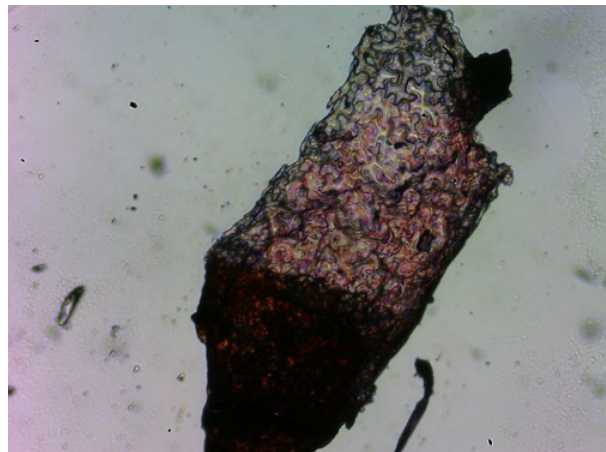
Project Update: August 2016

We have finished fieldwork from Humla, Darchula, Baitadi and Bajhang districts. During the field survey, we collected the scats of Himalayan black bear and vegetation of their habitats for diet and nutritional analysis. We also conducted the conservation awareness programmes in these districts. I started diet analysis work in lab. After completion of diet analysis work I will start nutritional analysis work in lab.



Himalayan Black bear conservation programme in Darchula, Nepal.

Tissue Structure of Fiddlehead Fern



Himalayan Black bear conservation programme in Darchula, Nepal.