

## The Rufford Foundation Final Report

---

Congratulations on the completion of your project that was supported by The Rufford Foundation.

We ask all grant recipients to complete a Final Report Form that helps us to gauge the success of our grant giving. The Final Report must be sent in **word format** and not PDF format or any other format. We understand that projects often do not follow the predicted course but knowledge of your experiences is valuable to us and others who may be undertaking similar work. Please be as honest as you can in answering the questions – remember that negative experiences are just as valuable as positive ones if they help others to learn from them.

Please complete the form in English and be as clear and concise as you can. Please note that the information may be edited for clarity. We will ask for further information if required. If you have any other materials produced by the project, particularly a few relevant photographs, please send these to us separately.

Please submit your final report to [jane@rufford.org](mailto:jane@rufford.org).

Thank you for your help.

**Josh Cole, Grants Director**

---

Grant Recipient Details	
Your name	Suwat Jutapruet
Project title	Feeding Area of Bryde's Whales ( <i>Balaenoptera brydei</i> ) and Indo – Pacific Humpback Dolphins ( <i>Sousa chinensis</i> ) in Tourism Site of the Gulf of Thailand.
RSG reference	17884-1
Reporting period	12 months
Amount of grant	£5,000
Your email address	suwat.j@psu.ac.th
Date of this report	August 30, 2016

1. Please indicate the level of achievement of the project's original objectives and include any relevant comments on factors affecting this.

Objective	Not achieved	Partially achieved	Fully achieved	Comments
1. Bryde's whale survey		✓		
2. Dolphin survey			✓	
3. Interview the 40 fishermen in the village near Bryde's whale watching site		✓ (20%)		Whole fishermen who are the tour guide of whale watching activities has only 20 fishermen and they can take tourist for watching tour in sort period (October- December)
4. Interview the 40 fishermen in the village near dolphin watching site			✓ (57 fishermen, 143%)	The dolphin watching piers in study area widely expanded and very popular.
5. Improve mobile website <a href="http://www.cetsite.org">www.cetsite.org</a> to collect the location data			✓	<a href="http://www.cetsite.org">www.cetsite.org</a> <a href="http://www.cetsite.org/pro">www.cetsite.org/pro</a>
6. Focus group meeting whale watching fishermen villagers			✓	
7. Dolphin watching fishermen villages			✓	
8. Proceeding in conference			✓	
9. Report to Department of Marine and Coastal Resources, Thailand		✓		Will pass my report that will be develop from proceeding soon
10. Manuscript preparation			✓	
11. Submit Manuscript		✓		In progress

2. Please explain any unforeseen difficulties that arose during the project and how these were tackled (if relevant).

I always misunderstand the fishermen due to the local Thai dialect. I tackled this by asking them again and again to make sure that I got the correct answers.

I cannot control the direction they do surveys because fishermen have their own experience and are self-confident to go in their own direction to find dolphins and whales in the tourism area.

### 3. Briefly describe the three most important outcomes of your project.

1. The importance of dolphin and whale habitat conservation that fishermen use for tourism. We need to take care of the study area and we need sustainable tourism in long term.
2. The better understanding in terms of the dolphin and whale habitat area that overlaps with the tourism activities which will help the related governor to create the marine policies or regulation.

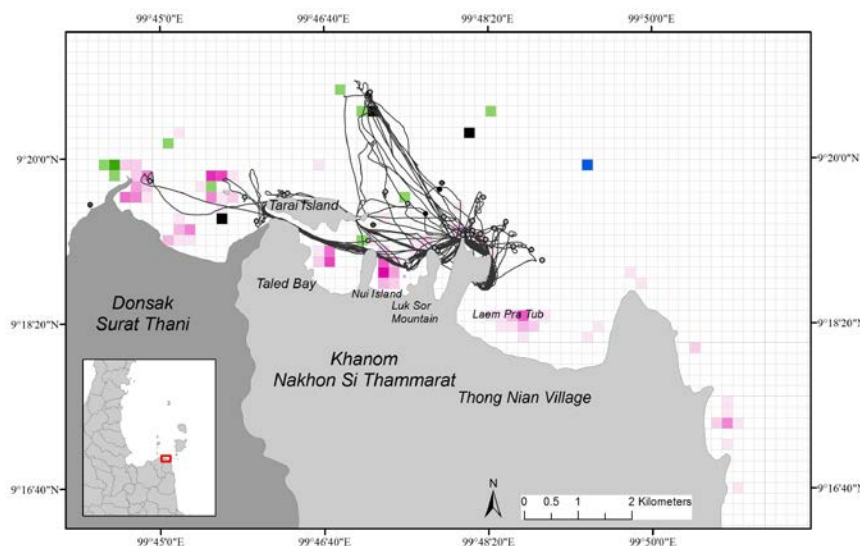


Figure 1  
 ■ Indo-pacific humpback dolphin  
 ■ Irrawaddy dolphin  
 ■ Finless porpoise  
 ■ Bryde's whale  
 ● Sighting by fishermen

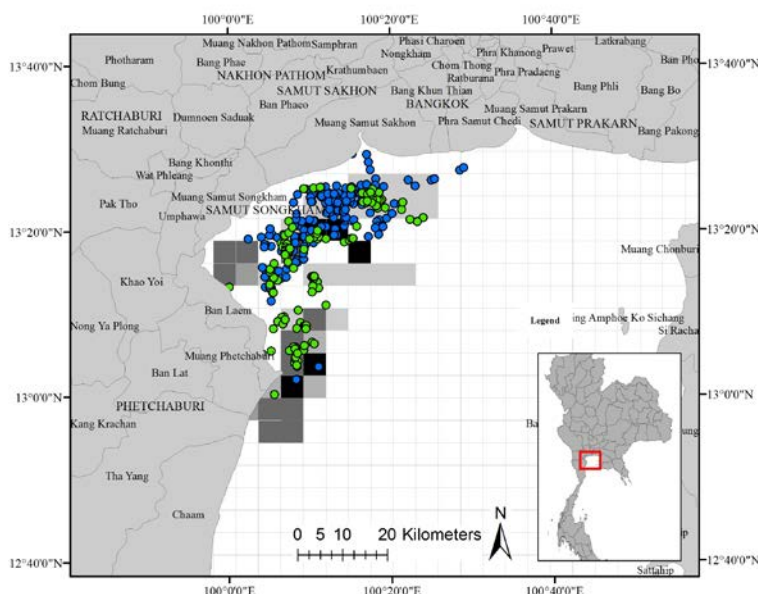


Figure 2  
 ■ Bryde's whale sighting by fishermen experience  
 ● Sighting by tour guide who collect data by themselves (● 2014, ● 2015)

3. The positive thinking of fishermen who have an open mind for researchers to ask them about dolphin and whale tourism by questionnaires and experience exchange about dolphin and whale tourism from the past to present.
- 4.



Figure 3 Focus group meeting at fishermen communities

**4. Briefly describe the involvement of local communities and how they have benefitted from the project (if relevant).**

I am preparing to help fishermen who are dolphin watching tour guides by educating them on how to guide the tourists to know the marine environment in the study area. I shared the results of our research with tourists using a dolphin tourism manual guide. Fishing communities in the study area have awareness of marine mammal conservation and develop themselves to know more how they can inform tourists about the importance of the marine environment for dolphin habitat.

**5. Are there any plans to continue this work?**

I am writing the proposal for some funding to monitor dolphin and whale populations in the future. The project topic concerns ferries between the mainland (Surat Thani Province) and Samui and Phangan islands that disturb the habitat area of three species of dolphin (Indo-pacific humpback dolphin, Irrawaddy dolphin and finless porpoises)

**6. How do you plan to share the results of your work with others?**

I have a connection with the officers of department of marine and coastal resources research centre (eastern, upper, middle and lower centres) who are the head office in endangered species group. Furthermore, I attended the national conference in the topic "Livelihood Change of Artisanal Fishery Community for Wildlife Cetacean Watching Tourism Activity in the Gulf of Thailand" under theme "Biological and Cultural Diversity: Living in Harmony" at The Impress Hotel, Naan Province, June 15-17, 2016. The greennews TV program

(<https://www.facebook.com/greennewstv/?fref=nf>) interviewed me for a short film that online on <https://www.youtube.com/watch?v=l6IUUR2aSDc&feature=share> and show the Rufford foundation logo at the end credit.

**7. Timescale: Over what period was The Rufford Foundation grant used? How does this compare to the anticipated or actual length of the project?**

Activities/Process	Time (month)											
	1 <sup>st</sup> Year											
	1	2	3	4	5	6	7	8	9	10	11	12
1. Bryde's whale survey	1			1			1			1		
2. Dolphin survey		1			1			1			1	
3. Interview the 40 fishermen in the village near Bryde's whale watching site			20			20						
4. Interview the 40 fishermen in the village near dolphin watching site				20			20					
5. improve mobile web site <a href="http://www.cetsite.org">www.cetsite.org</a> to collect the location data	1	1										
6. Focus group meeting Whale watching fishermen villagers Dolphin watching fishermen villages			1					1				
7. Proceeding in conference							1					
8. Report to Department of Marine and Coastal Resources, Thailand												1
9. Manuscript preparation									1	1	1	

Activities/Process	Time (month)											
	1 <sup>st</sup> Year											
	1	2	3	4	5	6	7	8	9	10	11	12
10. Submit Manuscript												

■ Planned schedule 
 ■ Done 
 ■ Not complete yet

**8. Budget:** Please provide a breakdown of budgeted versus actual expenditure and the reasons for any differences. All figures should be in £ sterling, indicating the local exchange rate used. (1 British pound =45.69 Thai baht, August 25, 2016)

Item	Budgeted Amount	Actual Amount/ half year	Difference	Comments
Travel and accommodation	1,900.00	1969.8	-69.8	
Travel (Gasoline), average 4000 baht x 9 trips		787.9		
Accommodation 18 days * 2 rooms (for staffs) (1500 baht/day)		1181.9		
Office supplies	1,000.00	998.78	1.22	
Web server rental 3 years * 2000 baht		109.09		Paid for the first year
Back up or data storage device 2 TB		72.73		
Memory card for camera 3 pieces * 2000		109.09		
Fishermen operation cost 12 months		72.73		
Refreshment and lunch for focus group meeting 40 persons * 2 focus group (Dolphin and Whale) * 2 times		290.91		
Document, papers, 80 hard copy for questionnaires, printing		90.91		
Data entry cost and Manipulation on GIS Software (Undergraduate student hiring)		185		
Maintenance cost (Camera, lenses, computer, printer etc.)		68.32		
Dolphin watching boat rental	300.00	350.186	-50.186	
Fishermen boat renting (1000 baht x 16 days)		350.186		
Whale watching boat rental	1800.00	1750.93	49.06	
Fishermen boat renting (10000 baht x 8 days)				
<b>Total</b>	5,145.6			



## 9. Looking ahead, what do you feel are the important next steps?

Monitoring the expansion of the number of wooden stations in Donsak river mouth (Indo-Pacific Humpback Dolphin habitat) that disturb dolphin habitat especially feeding behaviour. Whale watching regulation for local fishermen who had the part time job in whale watching tourism.

## 10. Did you use The Rufford Foundation logo in any materials produced in relation to this project? Did the RSGF receive any publicity during the course of your work?



Yes, I put it in the questionnaires and posters figure 4, 5, and 6

Figure 4. Rufford foundation logo on questionnaire



Figure 5. Rufford foundation logo Announcement poster

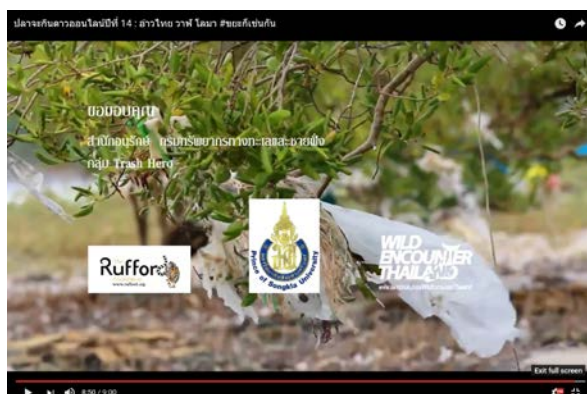


Figure 6. Rufford foundation logo at the end credit of movie clip on Youtube