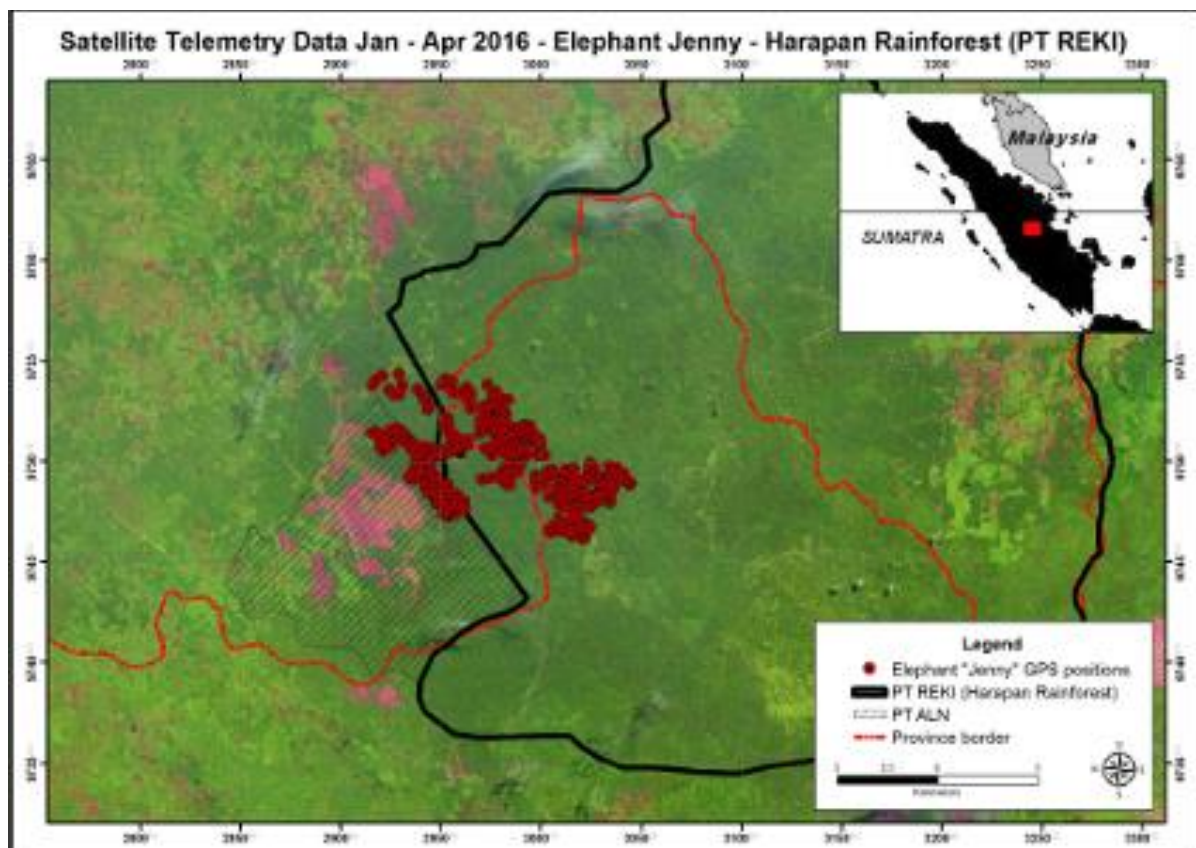


Project Update: May 2016

After successful collaring of adult female elephant “Jenny” in January 2016 we are now busy with monitoring her movement. Up to date Jenny used only a comparatively small part of the Harapan Rainforest in the eastern part of the concession area. She also spent considerable time outside the ecosystem restoration area within a commercial rubber plantation located right at the border of Harapan Rainforest. We believe that is the mix of scrubland and forest patches in this particular part of the landscape which attracts Jenny and her herd, as a lot of food plants preferred by elephants (e.g. palms, young trees, grasses, bamboo) grow especially well in relatively open areas of mixed vegetation types.



Elephant monitoring in Harapan Rainforest, Sumatra, Indonesia. Elephant GPS position updates for the period January – April 2016 are shown in red.