



Mid-year progress report  
June 2015

# CONTENT

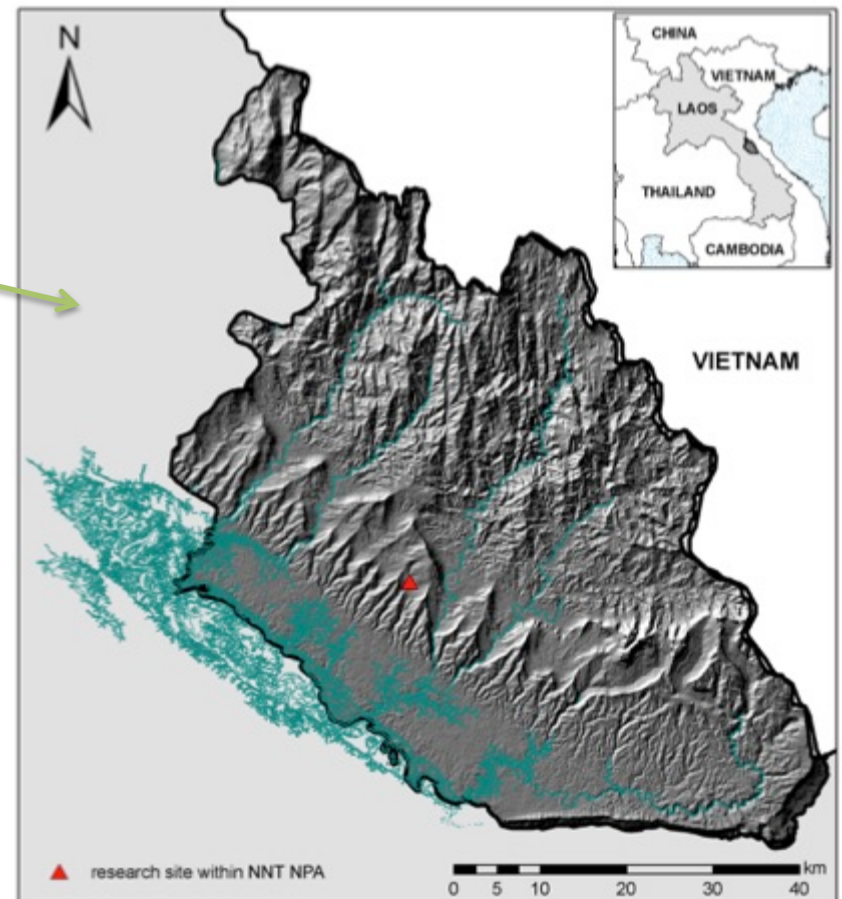
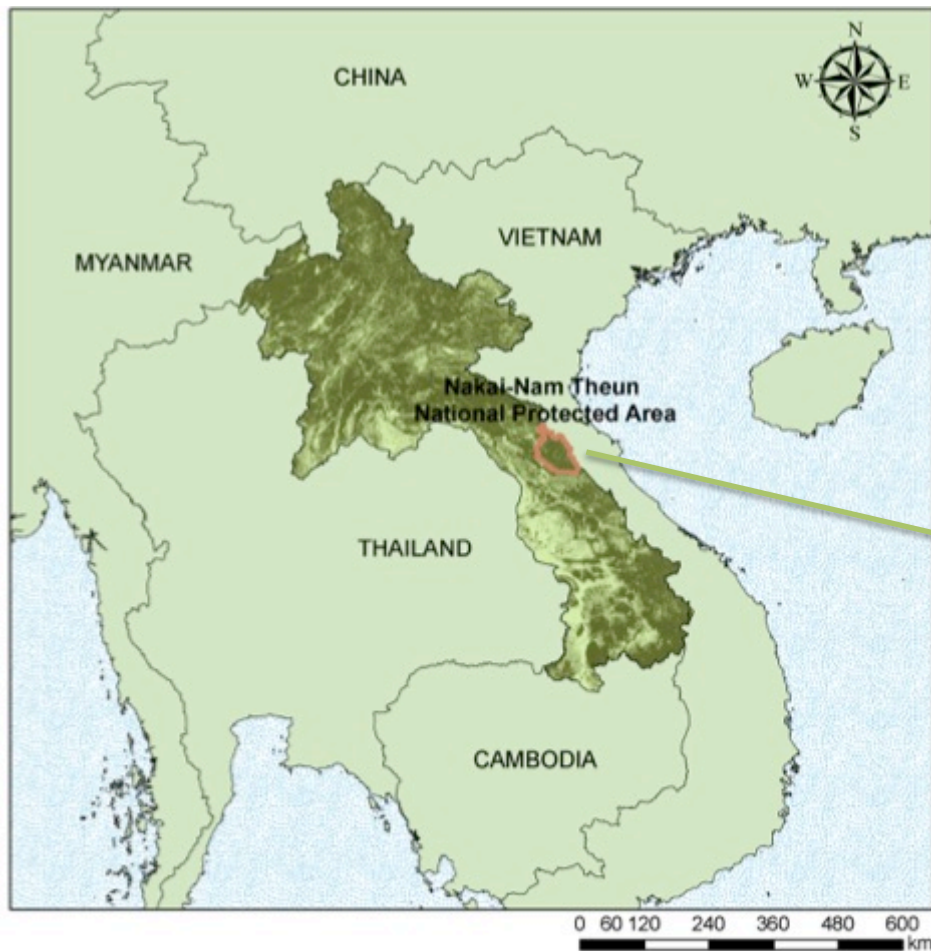
- 1. Association Projet Anoulak**
- 2. Our field station**
- 3. Our gibbon project**
- 4. Our Environmental Education Program**
- 5. Our red-shanked douc project**
- 6. Our otter project**
- 7. Donors**
- 8. Connect with us**
- 9. Support us**

# 1. Association Projet Anoulak

- Registered in France in 2014
- The project is developed and implemented around four components, in Nakai-Nam Theun National Protected Area:
  - **Scientific research**
  - **Capacity building**
  - **Habitat protection**
  - **Environmental education and community involvement**
- **Mission:** Develop and implement innovative, multidisciplinary and sustainable approaches to biodiversity & ecosystem scientific research and conservation at a local scale, in Nakai-Nam Theun National Protected Area, with a passionate and dedicated team of nationals and internationals.
- **Vision:** The restoration of the biodiversity of NNT NPA with empowered local community as principal actors and advocates for the safeguard of the habitat and wildlife through conscious and informed sustainable livelihoods and development.

A strong, dedicated, passionate and skillful scientific community of young Lao nationals acting together for the sustainable future of Laos? forest, biodiversity, environment and people.

# 1. Association Projet Anoulak



# 1. Association Projet Anoulak

- In **February 2015** was held our **first official meeting** with the attendance of (i) the Department of Forest Resource Management of the Ministry of Natural Resources and Environment; (ii) Nam Theun 2 Watershed Management and Protection Authority; (iii) District office of Forest Resource Management; (iv) Provincial office of Forest Resource Management; (v) village leaders; (vi) Project Anoulak
- This led to an agreement letter signed by the Ministry for the implementation of the project. This will be followed by a Memorandum of Understanding signed this year between Project Anoulak and the Nam Theun 2 Watershed Management and Protection Authority

# 1. Association Projet Anoulak

Team on the ground:

- **Camille Coudrat** – Project manager
- **Chanthalaphone Nanthavong** – Project coordinator
- **4 villagers** – Field assistants
- **2 district staff** – Field assistants (incl. data collection)
- **4 (2 couples) field station keepers** – field station maintenance

## 2. Our field station

- **February 2015:** reconnaissance survey to locate site
- **May 2015:** construction of the station
- **May 2015:** visit of village leaders to talk about the project and find staff for our project
- **June-August 2015:** systematic trails marking; location and mapping groups of doucs and gibbons



## 2. Our field station





### 3. Gibbon project



# 3. Gibbon project

## A. 2013-2014 study

- ◆ Support of Lao MSc student
- ◆ Publication 2015

## B. 2015-2016 study

- ◆ Habituation
- ◆ Ecological study
- ◆ Nutritional study
- ◆ Taxonomy
- ◆ Protection

## C. IUCN/SSC Primate Specialist Group Section on Small Apes

## D. Gibbon projects at other sites

# 3. Gibbon project

## A. 2013-2014 study

### ◆ Support of Lao MSc student:

Mr. Chanthalaphone Nanthavong (a.k.a. Tou) was supported by Project Anoulak for his Masters diploma and research on gibbons. He graduated in July 2014

For his efforts & commitment to primate conservation in Laos, he was awarded the American Society of Primatologists Conservationist Award in 2014!



Award presentation at the  
US embassy in Vientiane,  
Laos

# 3. Gibbon project

- ◆ **Publication 2015:** We had an accepted publication that will be soon published in *The International Journal Of Primatology* in 2015

## *Singing patterns of white-cheeked gibbons (Nomascus sp.) in the Annamite mountains of Laos*

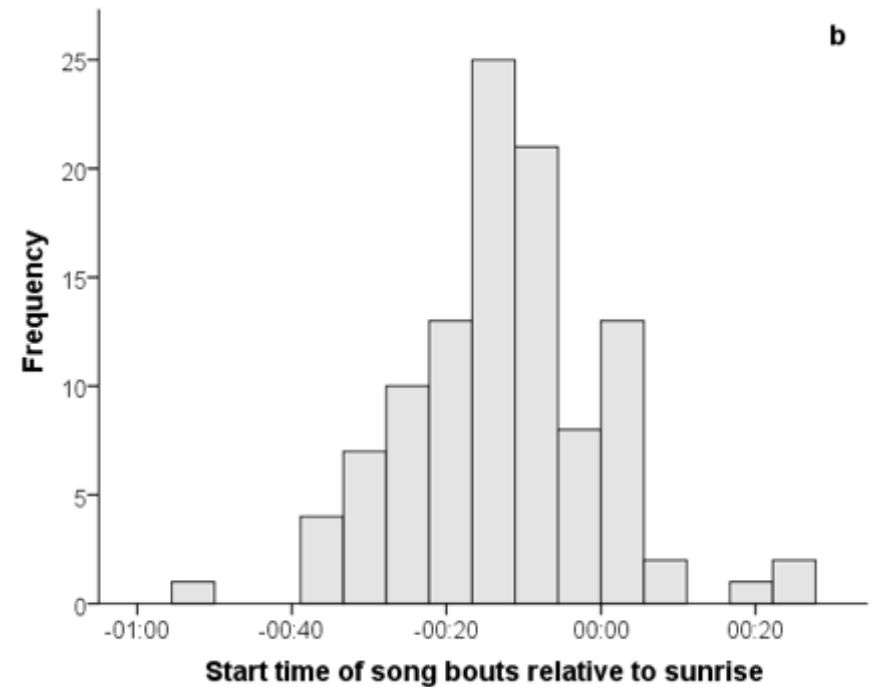
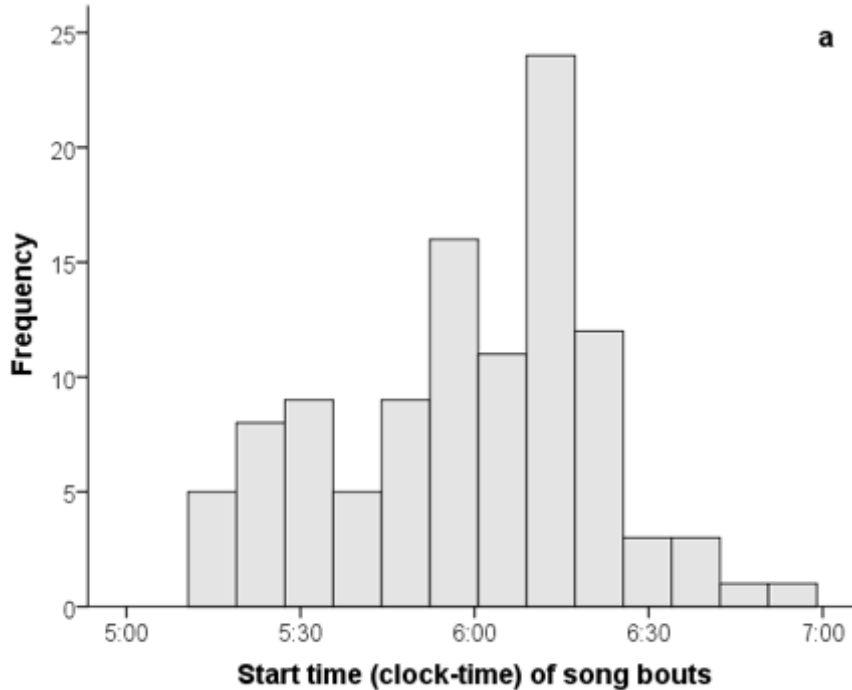
### **Abstract**

Studying the structure and patterns of primate vocalizations is important to understand their evolution, responses to changing environments, and social behavior, and to design efficient vocalization-based survey techniques. Gibbons (Hylobatidae) are small arboreal apes known for their stereotyped songs. Data on their vocalization patterns remain limited, especially for crested gibbons (*Nomascus* spp). We recorded songs of white-cheeked gibbons (*Nomascus* sp.) heard from listening posts at a site in Nakai–Nam Theun National Protected Area, central-eastern Laos, during a ‘cold dry’ and a ‘warm dry’ season, from November 2013 to May 2014, along with weather data. Males typically initiated the duet songs at a mean time of 06:14 a.m. Duet song bouts lasted a mean of 16 minutes. Song bout length was relatively constant throughout the study but decreased with the occurrence of wind. On a given day, the first male song started at a mean of 12 minutes before sunrise and all songs ceased at a mean of 13 minutes after sunrise. The start time of the first song relative to sunrise did not differ significantly between the two seasons but we found a significant negative relationship between the start time of the first song and both time of sunrise and temperature. The mean number of song bouts heard was significantly larger during the cold dry season than the warm dry season, and we found a significant negative relationship between the number of song bouts heard and temperature. Song rates also increased during days with no rain relative to rainy days. Our findings provide a preliminary understanding of song patterns in *Nomascus* spp. and can aid the planning and interpretation of surveys that rely on documenting their calls.

# 3. Gibbon project

◆ Publication 2015: International Journal Of Primatology in 2015

*Singing patterns of white-cheeked gibbons (Nomascus sp.) in the Annamite mountains of Laos*

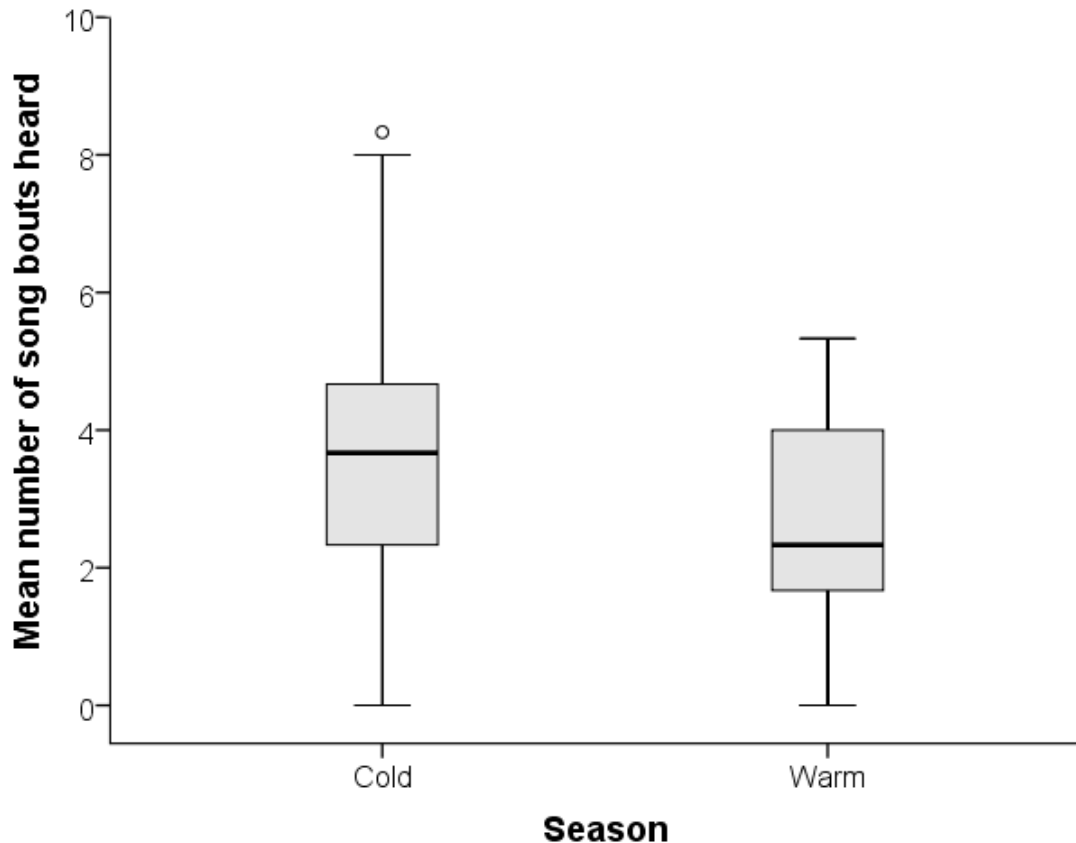




# 3. Gibbon project

◆ Publication 2015: International Journal Of Primatology in 2015

*Singing patterns of white-cheeked gibbons (Nomascus sp.) in the Annamite mountains of Laos*

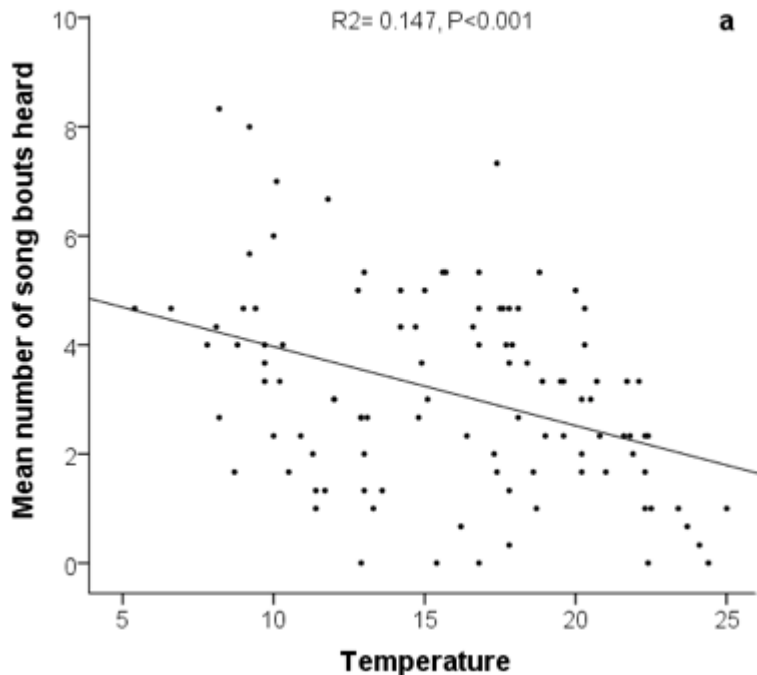


More gibbon song bouts heard during the cold dry season

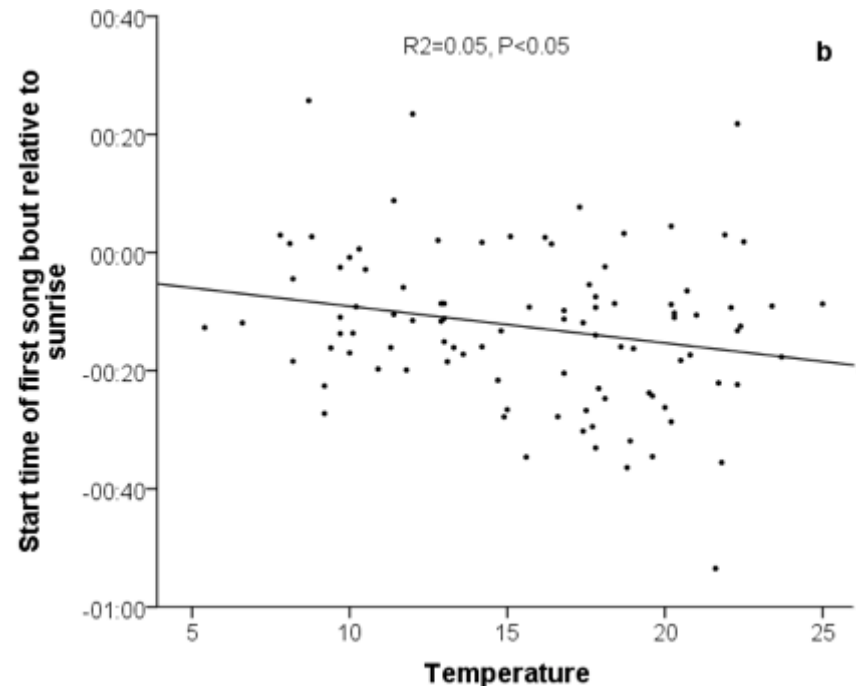
# 3. Gibbon project

◆ Publication 2015: International Journal Of Primatology in 2015

*Singing patterns of white-cheeked gibbons (Nomascus sp.) in the Annamite mountains of Laos*



significant negative relationship between the number of song bouts heard and temperature



significant negative relationship between start time of first song bout relative to sunrise and temperature

# 3. Gibbon project

## B. 2015-2016+ study

### ◆ Habituation:

Just after the rainy season, in **Sept-Oct 2015**, our team will start following a group (s) to habituate them to our presence. This process may take several months.

### ◆ Ecological study:

We will collect data whenever possible during the process. Once the group is fully habituated daily follows from sleeping tree to sleeping tree will be possible and data is collected every day on their feeding ecology, group dynamic, home range and activity budget

### ◆ Vegetation/habitat study:

From **September 2015**, we will support a Lao student under the supervision of a Lao botanist to conduct our habitat description and plant identification within plots at the research site.

### ◆ Nutritional study:

When feeding, the plants will be collected and prepared for transport at the National University of Laos for their identification. Additional samples will be collected and prepared for a nutritional content analysis in a laboratory in Vietnam.

To fully understand the nutrition requirement of gibbons in the wild, their digestibility capability needs to be assessed. This study will be conducted in **June 2015** in captivity at the Endangered Primate Rescue Centre, in Cuc Phuong National Park, Vietnam, where rescued gibbons are housed and fed a natural diet. This study will be conducted in collaboration with Mr. Francis Cabana, Primate Nutritionist Expert.

### ◆ Taxonomy:

Since it is still uncertain which species occurs in Nakai-Nam Theun, throughout the year we will train staff to collect acoustic samples of the gibbon songs across the protected area. These are species specific and will be analyzed to determine the species. This study will be conducted in collaboration with Dr. Thomas Geissmann.

### ◆ Protection:

Our Primate Monitoring & Protection Unit (funded by Ocean Park Foundation, Hong Kong) is responsible for the follows of groups of doucs and gibbons as well as regular patrolling around the field station to deter illegal activities such as hunting.

## 3. Gibbon project

### C. IUCN/SSC Primate Specialist Group Section on Small Apes

We are involved in the IUCN-publication 'Gibbon Survey and Monitoring Guidelines' with a Working Group of gibbon specialists.

The results of our 2013-2014 are used in the process.

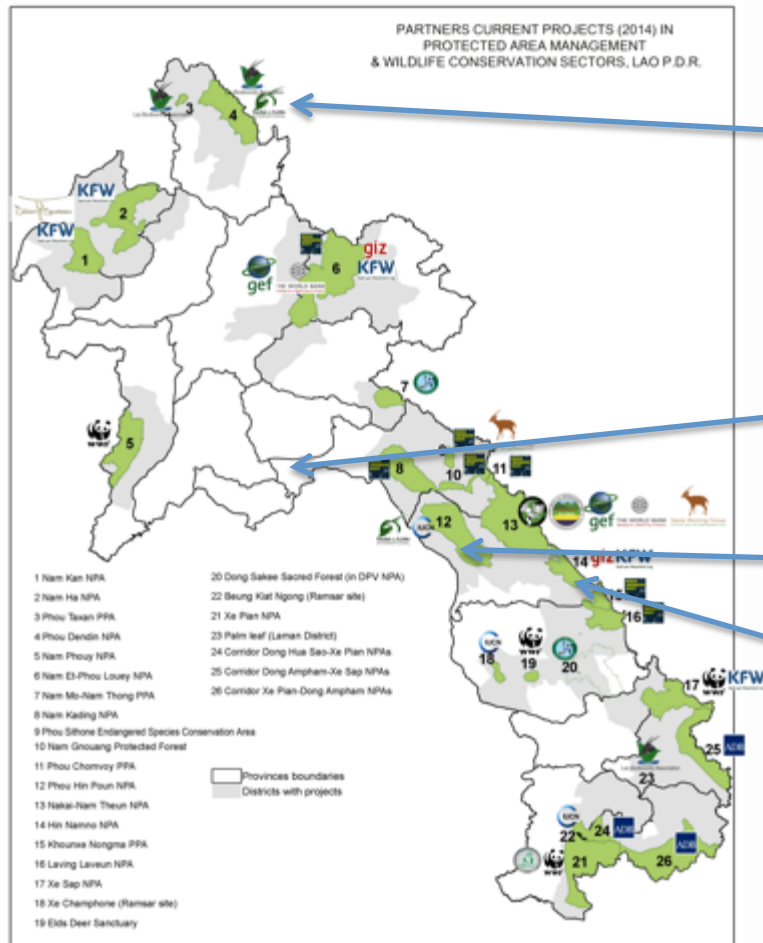
The Guidelines should be published by the end of 2015 and will be available online on the IUCN website.



# 3. Gibbon project

## D. Gibbon projects at other sites

We are involved in training and gibbon surveys in other parts of Laos in collaboration with conservation organizations; these include:



Phou Dendin NPA with Lao Biodiversity Association and Fauna & Flora International

Nam Ngiap Watershed with Nam Ngiap 1 Power Company and Asian Development Bank

Phou Hinpoun NPA with IUCN/FFI and Arcus Foundation

Hin Nam No NPA with German-Lao Development (GIZ)



# 4. Environmental Education Program

**A. PHASE I: completed** (see videos posted on our YouTube Channel!)

**B. PHASE II: on-going**

- ◆ A new Outreach and Education Officer added to our team! Janelle is American and will help us developing and implementing our program from December 2015.
- ◆ In May-June 2015: we have started developing our program with Janelle.
- ◆ July-Nov 2015: Janelle will be travelling through the US and visit schools to raise awareness for wildlife conservation, Lao wildlife and our projects; she will also be involved in networking and fundraising activities.
- ◆ From December 2015: regular visits of village schools in Nakai-Nam Theun for a year

# 4. Environmental Education Program





## 5. Red-shanked douc project



# 5. Red-shanked douc project

## ◆ Habituation:

Just after the rainy season, **in Sept-Oct 2015**, our team will start following a group (s) to habituate them to our presence. This process may take several months.

## ◆ Ecological study:

We will collect data whenever possible during the process. Once the group is fully habituated daily follows from sleeping tree to sleeping tree will be possible and data is collected every day on their feeding ecology, group dynamic, home range and activity budget.

## ◆ Vegetation/habitat study:

From **September 2015**, we will support a Lao student under the supervision of a Lao botanist to conduct our habitat description and plant identification within plots at the research site.

## ◆ Nutritional study:

When feeding, the plants will be collected and prepared for transport at the National University of Laos for their identification. Additional samples will be collected and prepared for a nutritional content analysis in a laboratory in Vietnam.

To fully understand the nutrition requirement of doucs in the wild, their digestibility capability needs to be assessed. This study will be conducted in **June 2015** in captivity at the Endangered Primate Rescue Centre, in Cuc Phuong National Park, Vietnam, where rescued doucs are housed and fed a natural diet. This study will be conducted in collaboration with Mr. Francis Cabana, Primate Nutritionist Expert.

## ◆ Protection:

Our Primate Monitoring & Protection Unit (funded by Ocean Park Foundation, Hong Kong) is responsible for the follows of groups of doucs and gibbons as well as regular patrolling around the field station to deter illegal activities such as hunting.

## 6. Otter project





## 6. Otter project

- ◆ Thanks to donations from the Otter Specialist Group and Phoenix Zoo, we are embarking on the first otter-targeted camera-trap survey in the area.
- ◆ The species occurring in Nakai-Nam Theun National Protected Area are still uncertain and our survey aims to identify them, in addition to understand their main threats. The results of our preliminary survey will be used to prepare an Action Plan for the conservation of otters in the area, in collaboration with the Otter Specialist Group!
- ◆ From October 2015 we will set-up at least 10 cameras at strategic location along one of the large rivers in the protected area and leave them for about 4 months with monthly check-up and collection of photographs and battery change.

# 7. Current Donors

## GIBBONS



MINNESOTA ZOO



## DOUCS



BEAUVAL  
NATURE  
pour la Conservation  
et la Recherche



صندوق محمد بن زايد  
للمحافظة على الكائنات الحية  
The Mohamed bin Zayed SPECIES CONSERVATION FUND

## FIELD STATION

CRITICAL ECOSYSTEM  
PARTNERSHIP FUND

## EDUCATION

## OTTERS



IUCN Otter Specialist Group  
Leading global otter conservation



## 8. Connect with us

Project manager: [camillecoudrat@gmail.com](mailto:camillecoudrat@gmail.com)

Website: [www.conservationlaos.com](http://www.conservationlaos.com)

YouTube: [www.youtube.com/c/Conservationlaos](http://www.youtube.com/c/Conservationlaos)

Facebook: [www.facebook.com/projectanoulak](http://www.facebook.com/projectanoulak)

Twitter: <https://twitter.com/ConservationLao>

Instagram: <https://instagram.com/conservationlaos/>

## 9. Support us

- Amazon wish list:

[http://www.amazon.com/gp/registry/wishlist/1Y0G71VC24ZD2/ref=topnav\\_lists\\_1](http://www.amazon.com/gp/registry/wishlist/1Y0G71VC24ZD2/ref=topnav_lists_1)

- Direct donation transfer:

You can make a donation by bank transfer directly at:

**Ass Projet Anoulak**

**51 Rue du Jardin Zoologique, 68100, Mulhouse, France**

**BANQUE POPULAIRE D'ALSACE, Mulhouse Kennedy**

**IBAN: FR76 1760 7000 0170 1989 7525 257**

**SWIFT code: CCBPFRPPSTR**

**Account Number: 70198975252**

2015  
Year of the Gibbon!

