

Project Update: December 2015

We started the implementation of the experiments to investigate the effects of the alien cup coral (*Tubastraea tagusensis* and *T. coccinea*) success on two relevant ecological processes, coral recruitment and herbivory (by reef fishes) in Brazilian coral reefs (Figure 1). We have implemented recruitment plates (Figure 1A) and recorded the reef fish foraging behaviour (Figure 1B) in the invaded and control areas. In the next step of our work, the recruitment plates will be monitored by photos and new records by video camera will be performed to increase replication. In addition, we will remove the alien coral colonies on a small scale (quadrats with 0.5m²) and monitor the alien settlement rate over time.

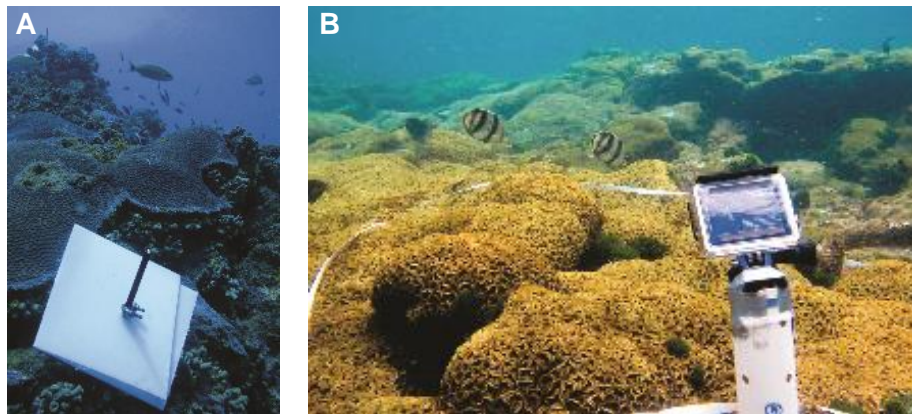


Figure 1. Experiments in invaded and control areas in Todos os Santos Bay (Bahia, Brazil): A) recruitment plates fixed on invaded zone in Cascos Reef, B) remote video recording reef fish foraging behaviour in control area in Farol da Barra.