

Project Update: April 2016

Between January and April 2016 the recruitment plates implanted in December 2015 in the invaded and control areas were monitored (Figure 1A). In addition, GOPRO video records were made also in the invaded areas (Figure 1B). The data recorded by cameras (fish bites number) were analysed and the results show higher herbivore fish bites in areas with lower invader coral cover. Sun-Coral colonies removals were also carried out on sites with low invader cover as a way to maximize the invasion control efficiency.

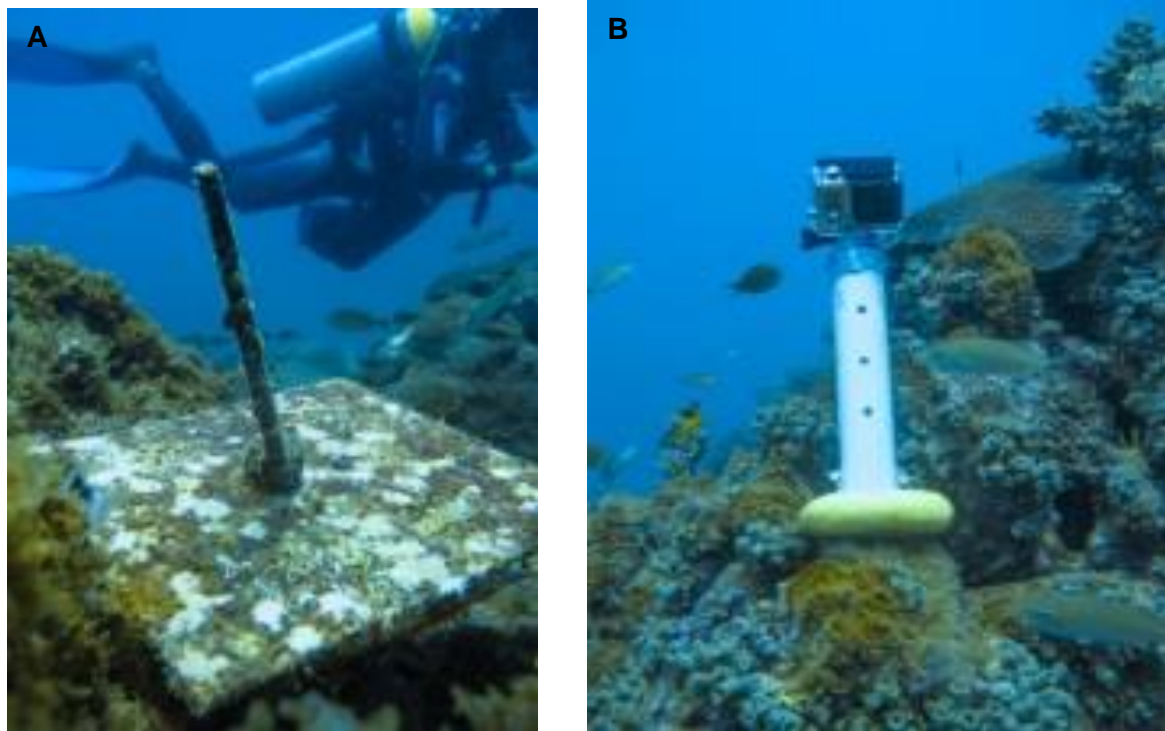


Figure 1. Experiment monitoring in invaded and control areas in Cascos Reef (Todos os Santos Bay, Bahia, Brazil): A) recruitment plates photographed after two months established, B) remote video recording reef fish foraging behavior in invaded area.