

Camera Traps

Progress Report II

Project Coordinators: Bruce Levick and Zul Asfi

Contact: Bruce Levick | bruce.levick@gmail.com | +62 81261939655

Partners: Vesswic | Tulsa Zoo | BKSDA Bengkulu

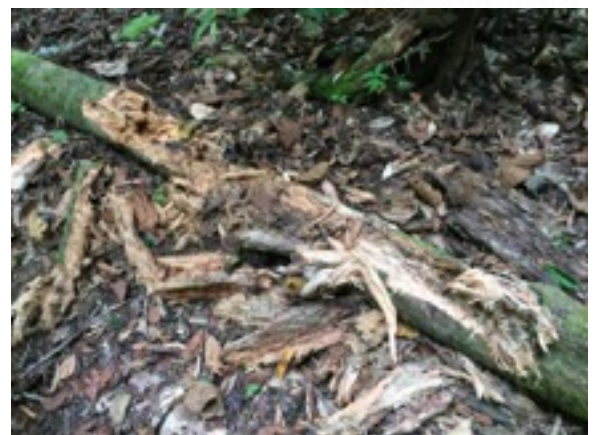


Continuation of the 1 year camera trap project in the TWA Seblat Conservation Area.

Tapir Photo and Video



The first images have started coming in from the TWA Seblat conservation area and a Tapir was spotted wandering through a known corridor for wildlife. Mostly spotted were wild boars but the photo and video of



the Tapir was a great first capture for the patrol unit and the camera traps.

The camera traps were only placed for 10 days initially as it was deemed to be unsafe prior to the use of the cameras without secure boxes. With lots of illegal activity still happening throughout the conservation area it was decided to remove the traps until the security boxes could be installed with the cameras.

Images of the elephant patrol unit in October and evidence of a sun bear at one of the new camera trap locations.



Secure Boxes

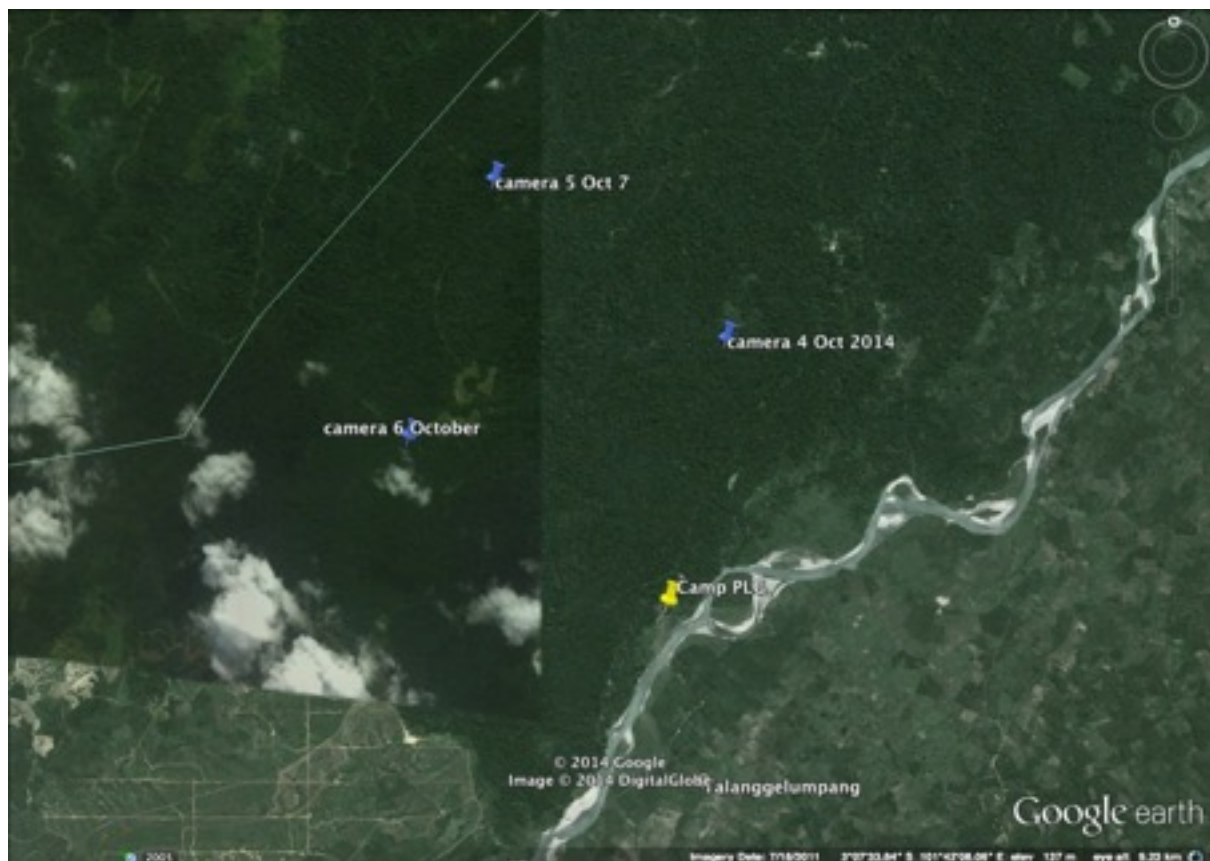
With three cameras confirmed lost it was decided to purchase high strength secure boxes with slings made specifically to secure the cameras in place and try to prevent further cameras from being lost. It was also decided to implement the cameras more discretely to make them less visible to any potential illegal loggers or poachers to see the cameras.



New Camera Locations

The secure boxes were brought to the patrol unit in October and three cameras were placed into the TWA Seblat Conservation area with the most recent patrol.

- Camera 4 placed near a large game trail in the hope to spot some wild elephants
- Camera 5 was placed around an area where there were obvious signs of a tiger.
- Camera 6 was placed in an area that showed obvious signs of sun bear activity.



Data is due to be collected from these three new locations in December along with 3 more cameras placed with secure boxes, making for a total of 6 cameras from December placed inside the TWA Seblat Conservation Area.