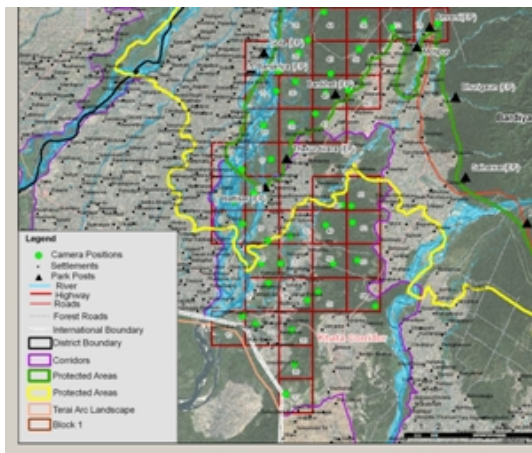


Project Update December 2013

Research design and site selection for Camera trap Placement:

Camera trapping has been used for estimating tiger abundance. Remote camera devices (Goodson & Associates, USA) were fixed along trails and roads in the forest frequently used by tigers, as described by (Karanth 1995, Wegge *et al.* 2009). The 125 [sq.km](#) study area was divided into three sampling blocks on the basis of spatial geo-location. Wegge *et al.* (2004) stated a trapping distance of 1-2 km in a high-density area like Bardia NP, thus we followed the 1-1.5 km spacing. Essentially, the idea is to cover the area of interest with camera traps in such a way that the chances of photo trapping the resident tigers of that area are maximised. Therefore, a systematic grid of 2 km x 2 km was laid on a map of the study area and a camera trap was placed within each 4 km² grid cell.



Camera trapping grid cell



Me ready for placement of camera traps for tiger photo in field