

## Project Update: December 2012

In July 2012, the Project was started with the sample design to field survey. The potential occurrence areas of the muriqui in Paraná State were defined as those within the Atlantic Forest biome and reported in the literature as areas of probable occurrence for the species (Aguirre, 1971; Marstuschelli et al., 1994; Koehler et al., 2005). This area comprises a total of 14,525 km<sup>2</sup> and includes the east part of Paraná State with fragmented and continuous forest. From digital cartographic database the study area was divided in a grid of square cells of 10,000 ha at the ArcMap 10 software. From a digital map of the Atlantic Forest Remnants in 2005-2008 from “Fundação SOS Mata Atlântica” only grids with at least one fragment larger than 100 ha was considered for sampling. It resulted in 117 sites (75 at the fragmented area and 42 at the continuous forested area) of which 60 (40 at the fragmented area and 20 at the continuous forested area) were randomly selected as the sampling sites.

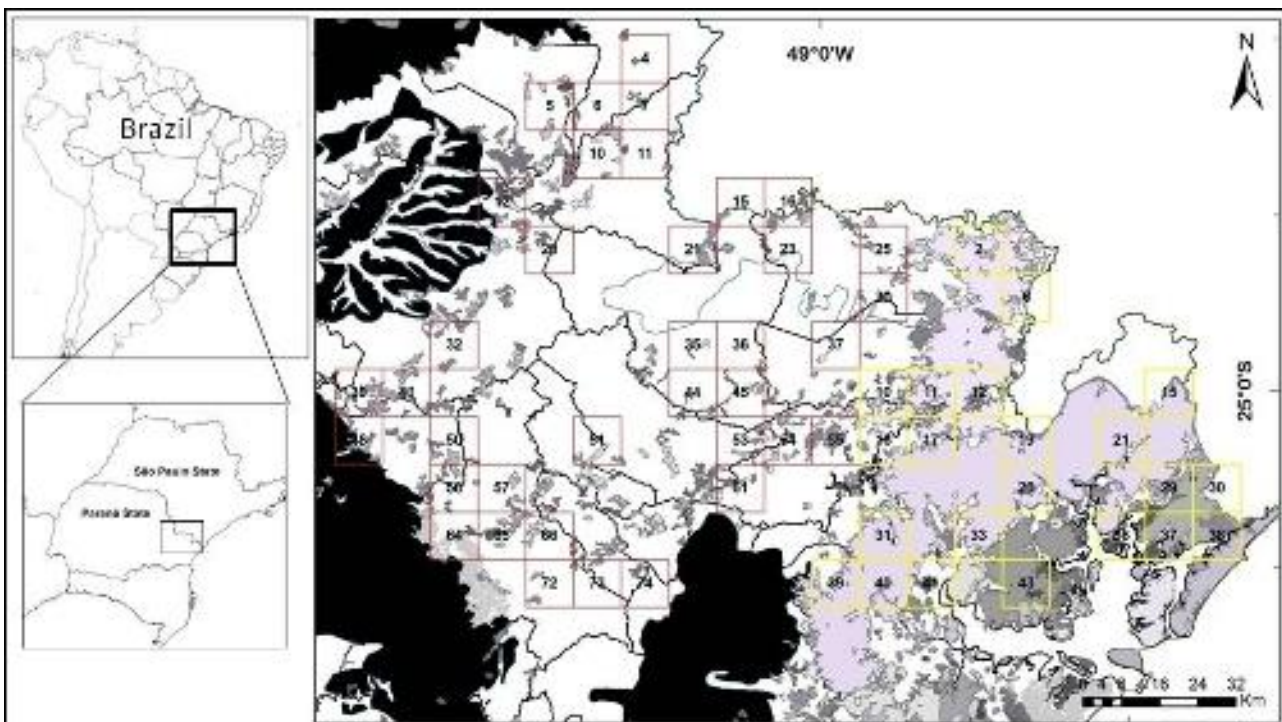


Figure 1: The study area showing the 10,000 ha grid sampling sites (red squares are the fragmented areas and yellow squares the continuous forested area).

In the middle of September 2012, the licence to carry out the field work was renewed and in October the researchers Bianca Ingberman and Roberto Fusco Costa went to Switzerland to attend the course “Modelling Patterns and Dynamics of Species Occurrence Workshop” at the Swiss Ornithological Institute (“Schweizerische Vogelwarte”) to learn more about the methodology used in the project. In November 2012, was done a pilot interview and the questionnaire was finalised. In December 2012 and January 2013, the surveys started and up to now eight interviews have been done in three samples sites at the continuous forested area and respondents of other samples sites were raised.